

2016 2



9000-9400

:Z0000799

1605

11000-12500

1609

1800-2000

2016 2

1	49.4	52.0	54.4	1				
-9.2%	-4.4%	10.8%						
2	Markit	PMI	49.8	28	53.5	53.2		
2	Markit	PMI	50.1	53.2				
1			4.9%		2.9%	-5.0%		
-4.6%	1			1.8%	0.3%	-1.0%		
-0.7%	1				3.9%	1%		
-4.3%	-3.7%							
1		(PCE)	0.5%		0.4%			
0.3%	1		(PCE)	0.5%	0.3%	0%	0.1%	
1		0.4%	0.3%	0.1%	0.2%			
1	PCE		0.1%	0%	-0.1%	1	PCE	
1.3%	1.1%	0.6%	0.7%	1	PCE			
0.3%	0.2%	0%	0.1%	1	PCE	1.7%		
2012	11		1.5%	1.4%	1.5%			
		GDP		1.0%	0.4%	0.7%		
		(PCE)		2.0%	2.2%	2.2%		
GDP		0.9%	0.8%	0.8%		PCE		
		1.3%	1.2%	1.2%				
2		GDP		0.3%	0.3%	0.3%		
GDP		1.5%	1.5%	1.6%				
	1	CPI		0.3%	0.4%	0.4%	0.2%	1
	CPI		1.0%	1.0%	1.0%	1	CPI	-1.4%
-1.4%	0.0%							
3	1			1	()	-11.2%		
-1.8%	-1.4%	1	()	-18.8%	-3.8%	-7.6%		
1	+632.9		+606.0		+600.9			

2016 2

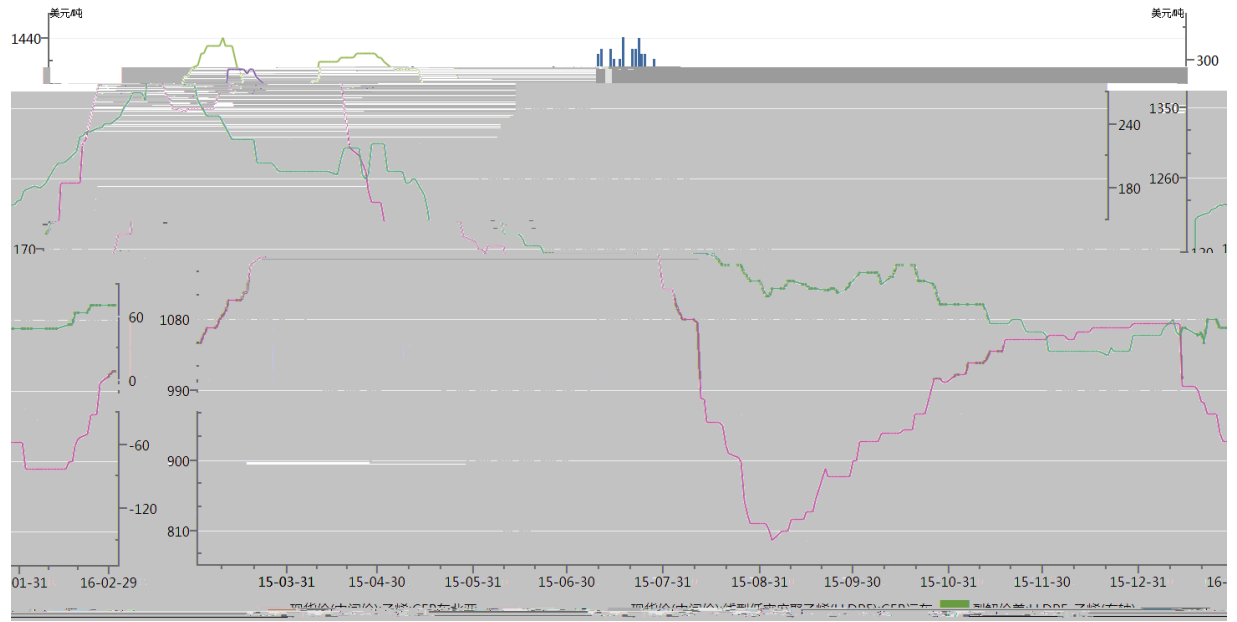
1	()-6.6%	3.6%	2.3%	1
()-14.4%	1.8%	-4.0%	1	+4062
+3890.1		+3820.5			
1		2.51		1.9	5978
1		3.42	2.2	1.82	
1	M2		14%	19	13.5%
1	M1		18.6%	14.7%	15.2%
		15.1%	10.6%	4.9%	
1	CPI	1.8%		1.9%	1.6%
0.5%	0.5%	1		4.1%	2013
		1.2%			12
1	PPI	-5.3%	-5.4%	-5.9%	1
-0.6%	1	PPI	47		7
					90
1%		90		1.5%	
2	2				

LLDPE

1	2016	1		201	443
			9.6%		
2	2016	1		90	3.6%

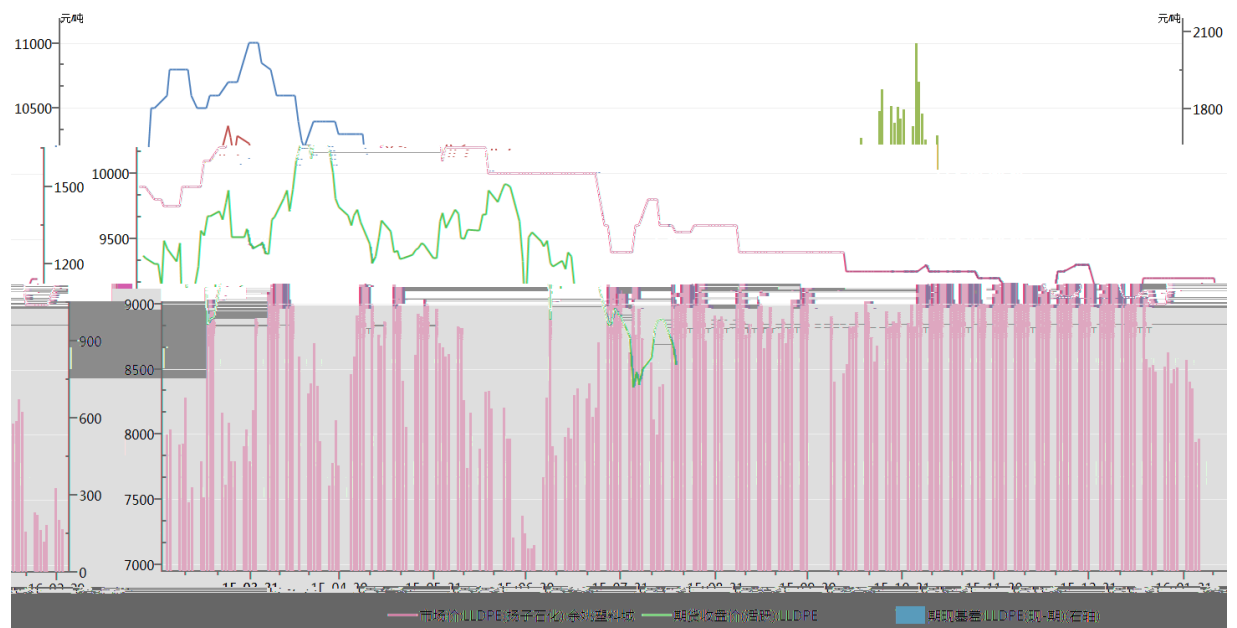
2016 2

LLDPE 产业裂解价差



WIND

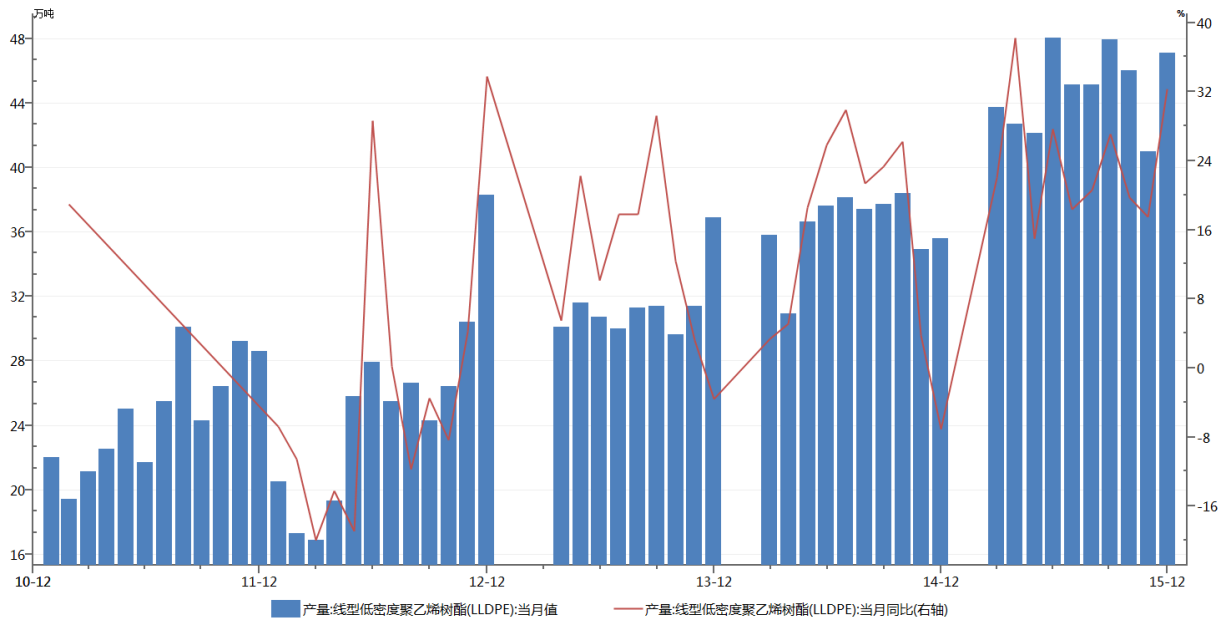
LLDPE 期现基差



WIND

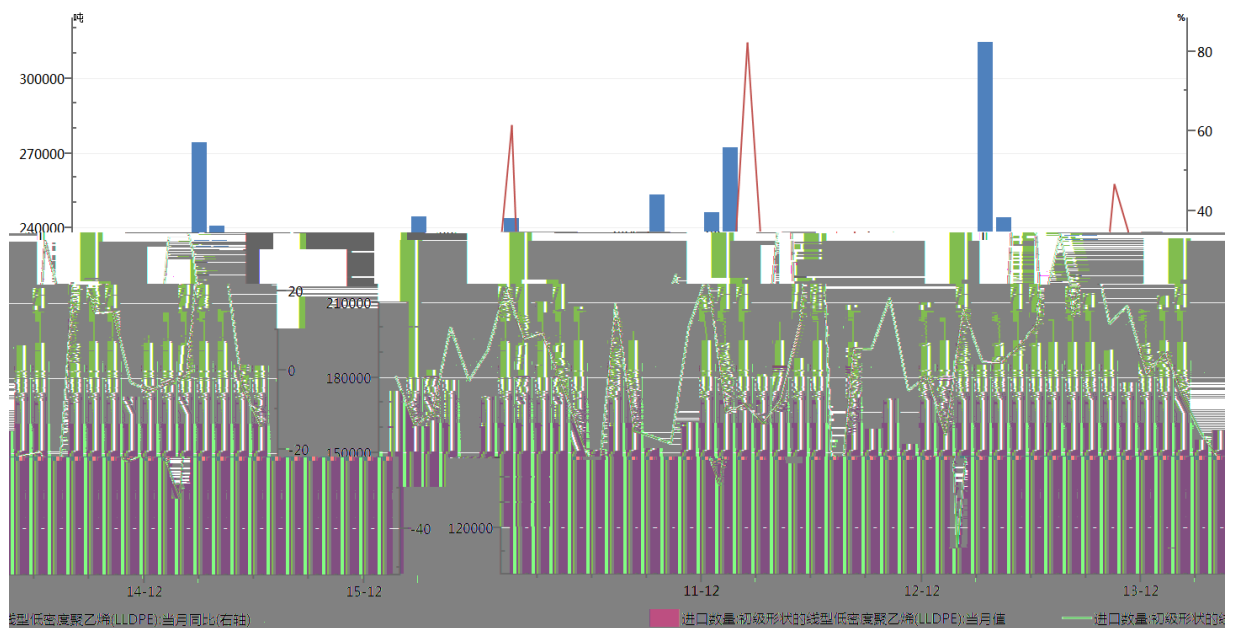
2016 2

LLDPE 月度产量



WIND

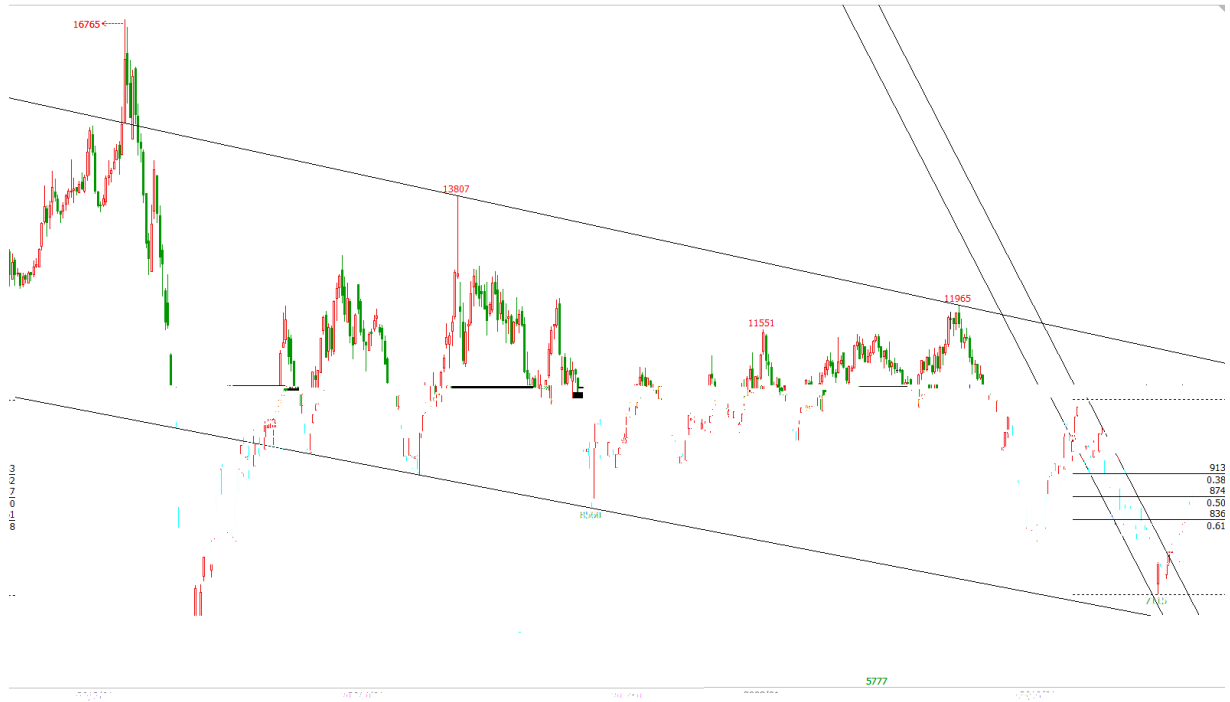
LLDPE 月度进口



WIND

2016 2

LLDPE



9000-9400

1

ITRC

3

6

61.5

2008

2%~3%

3

32.4

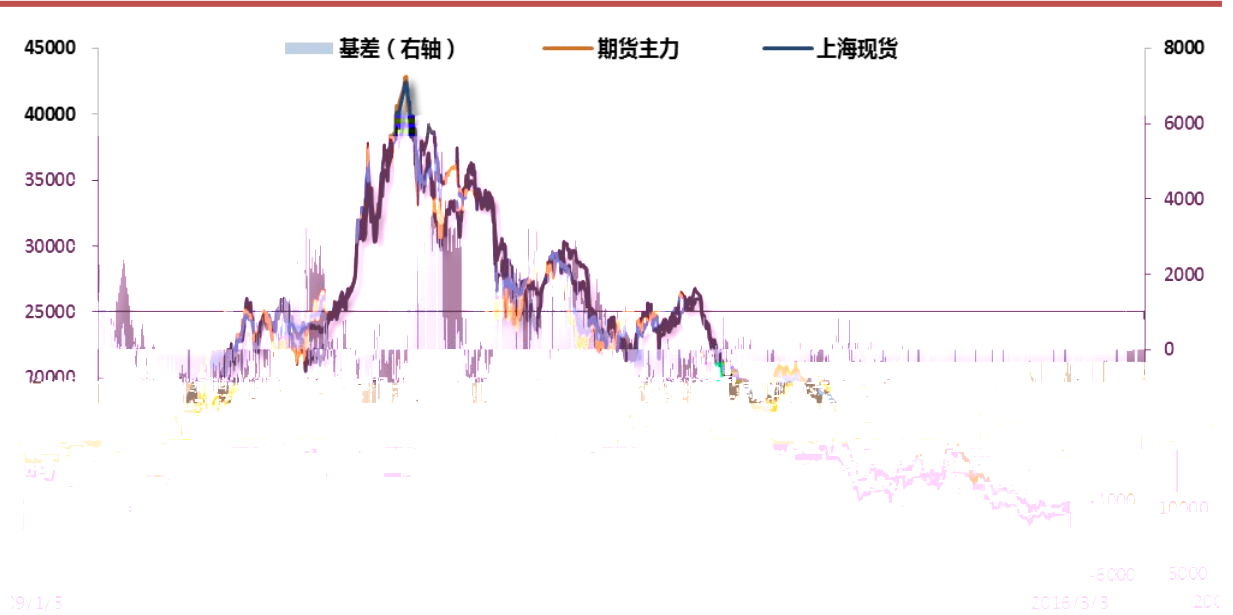
23.874

5.226

2016 2

2 2016	1	12%	298,789	11%
		2.4%	8.4%	
62.8%	2016 2	2.4%		

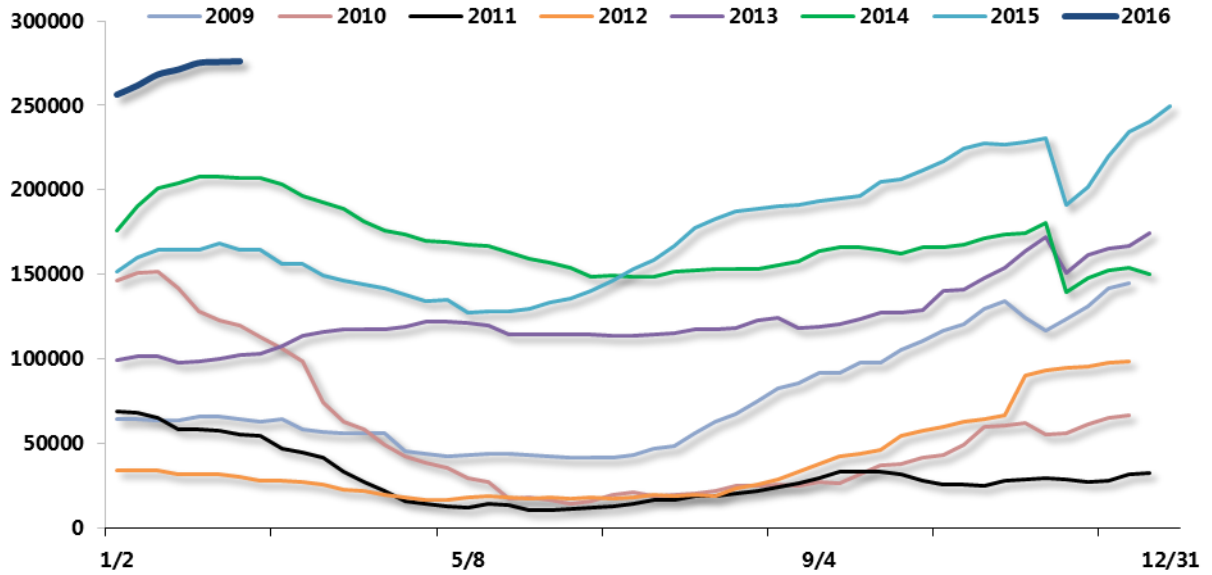
天然橡胶期现价差



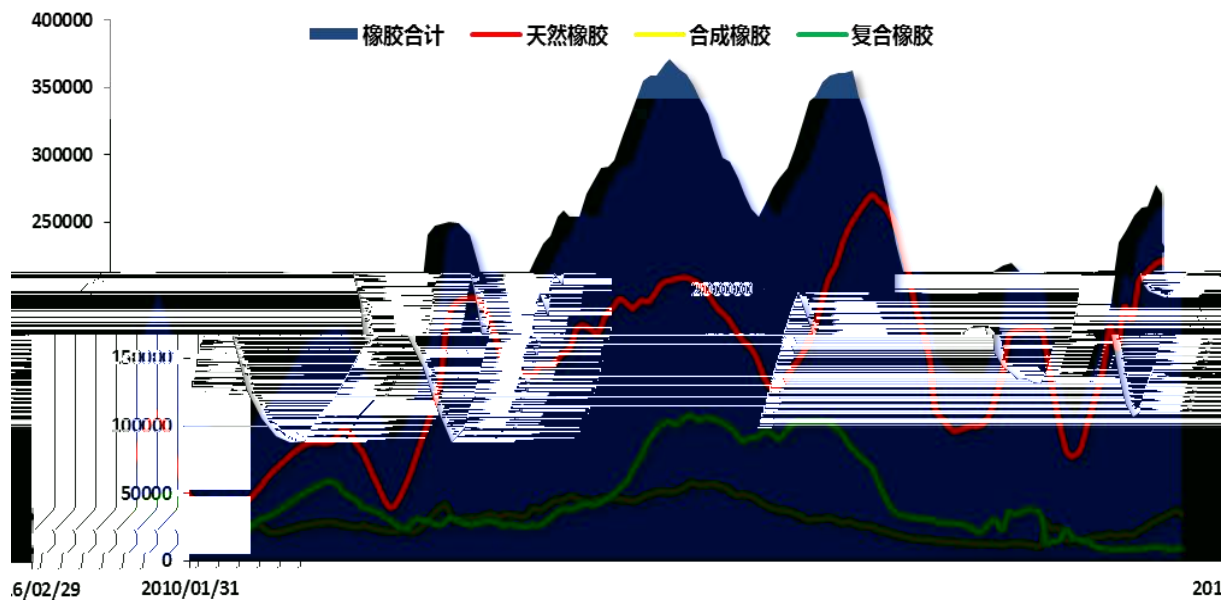
600

上海期货交易所天然橡胶库存 (吨)

2016 2



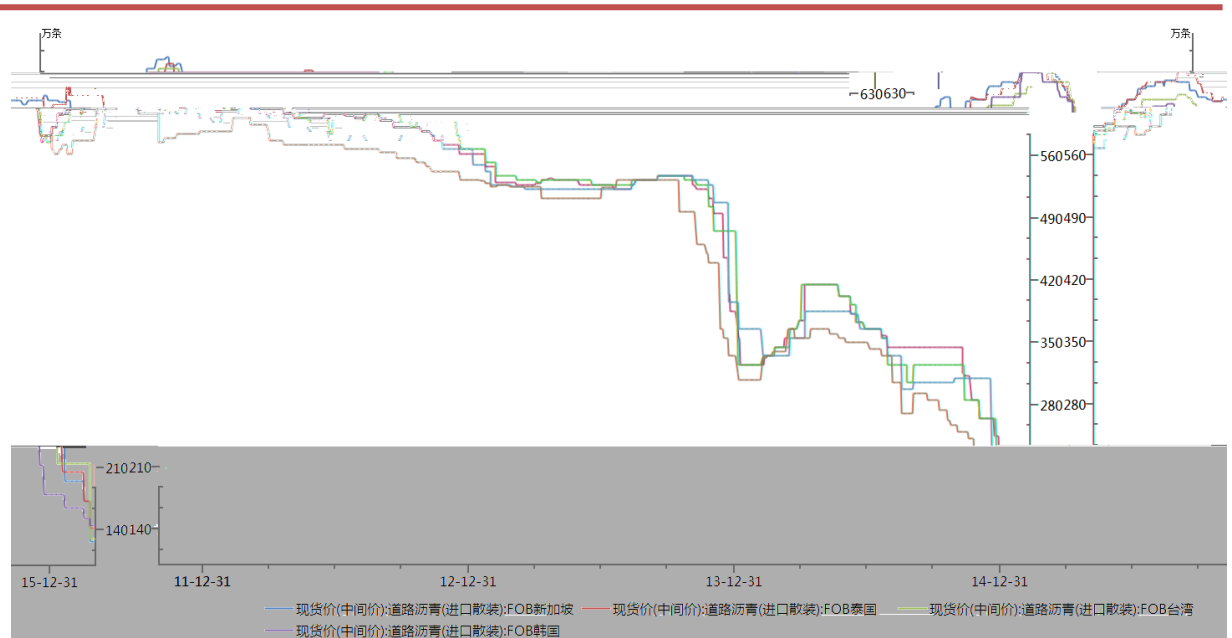
青岛保税区橡胶库存 (吨)



中国橡胶月度进口

OPEC 1 29
 12 498 2010 3
 1000 1 29 6
 121 1 29 18 619

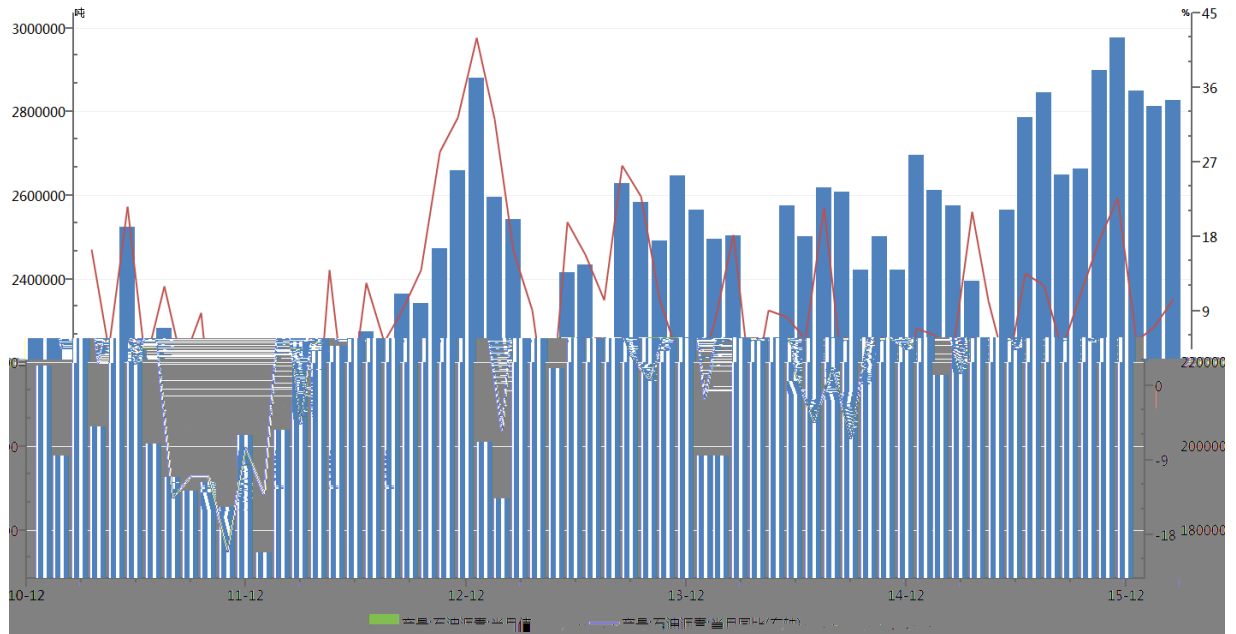
进口沥青 FOB



WIND

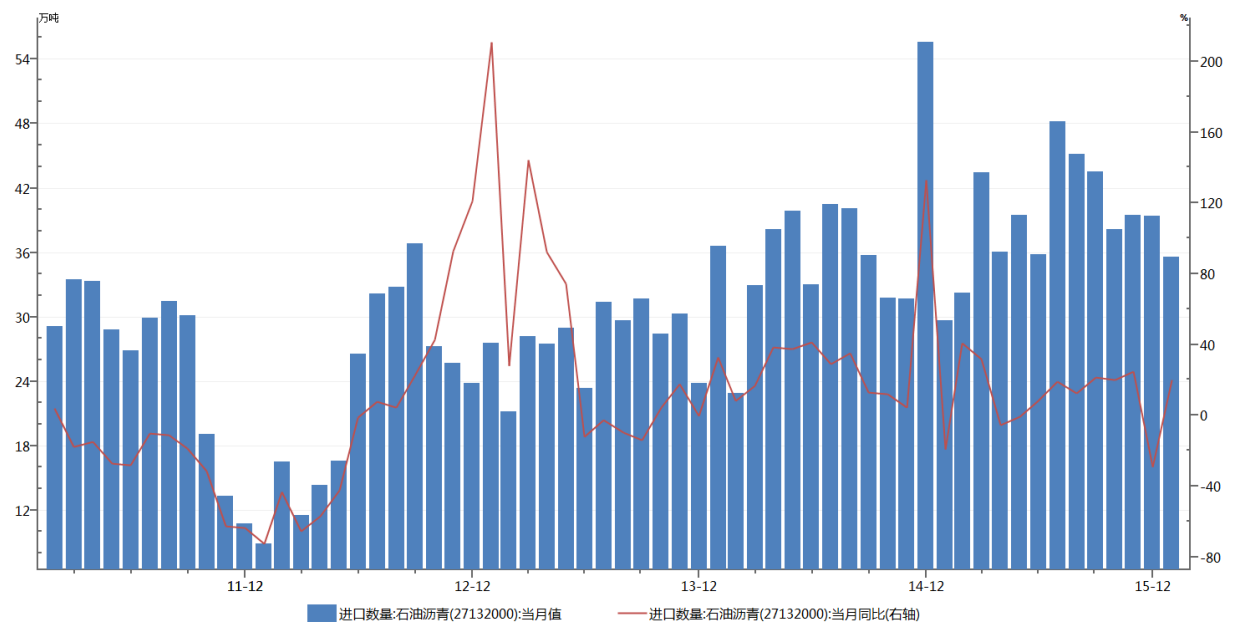
2016 2

中国沥青产量



WIND

中国沥青进口量



WIND

2016 2



1800-2000

2013