

PTA



	cf605	
0		macd
	cf605	0
0		macd
	PTA	TA605
0	macd	0
	macd	0
0	0	
	ta605	4300 /
		ta605
Cf605		11600 /
		ta605
TA605		4600 /

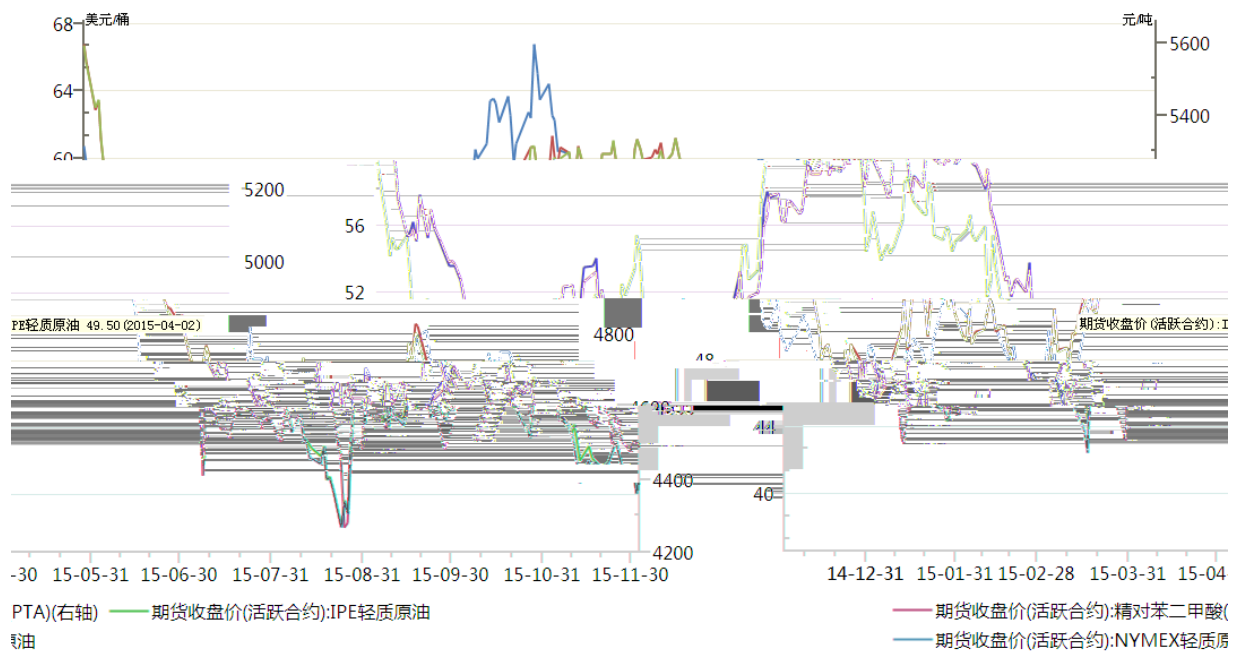


PTA 2016 1 3

190

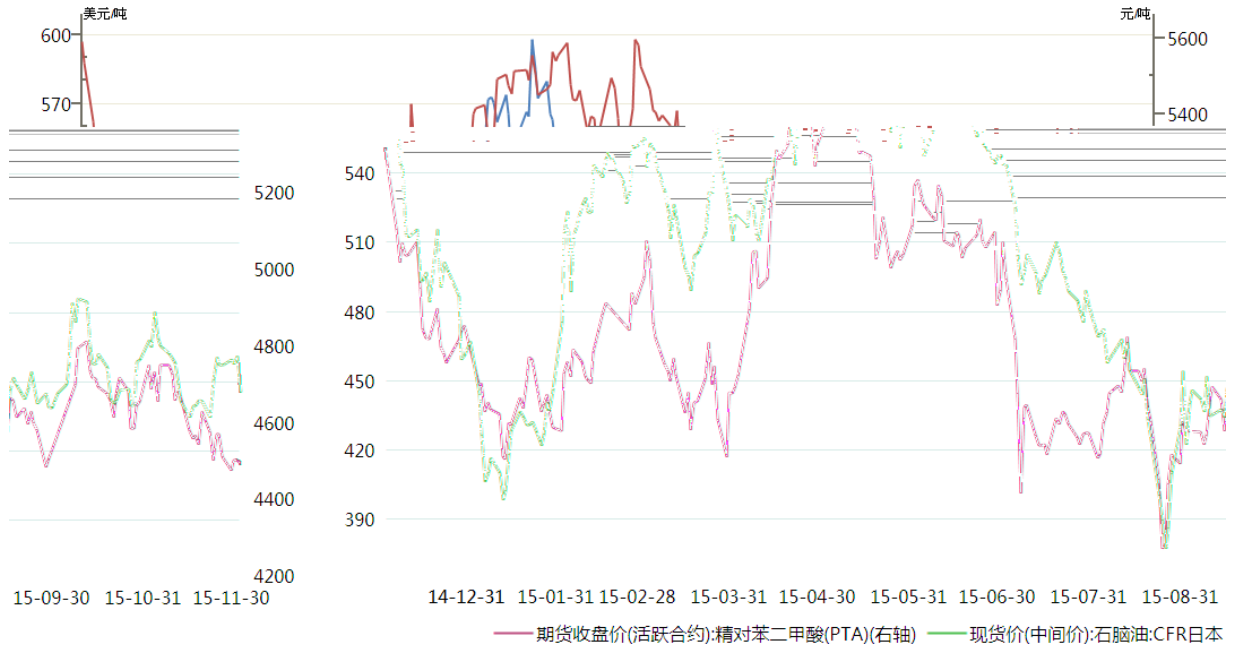
					2015	11		
8.45		100.65		8.3%				
	2015	11		128.71		40.9%	2015/16	
17.75		40.2%						
		350.3		210.2				
						12	23	17.4
	8.33%					210		
	2015							
650	700					620	650	

原油与PTA走势对比



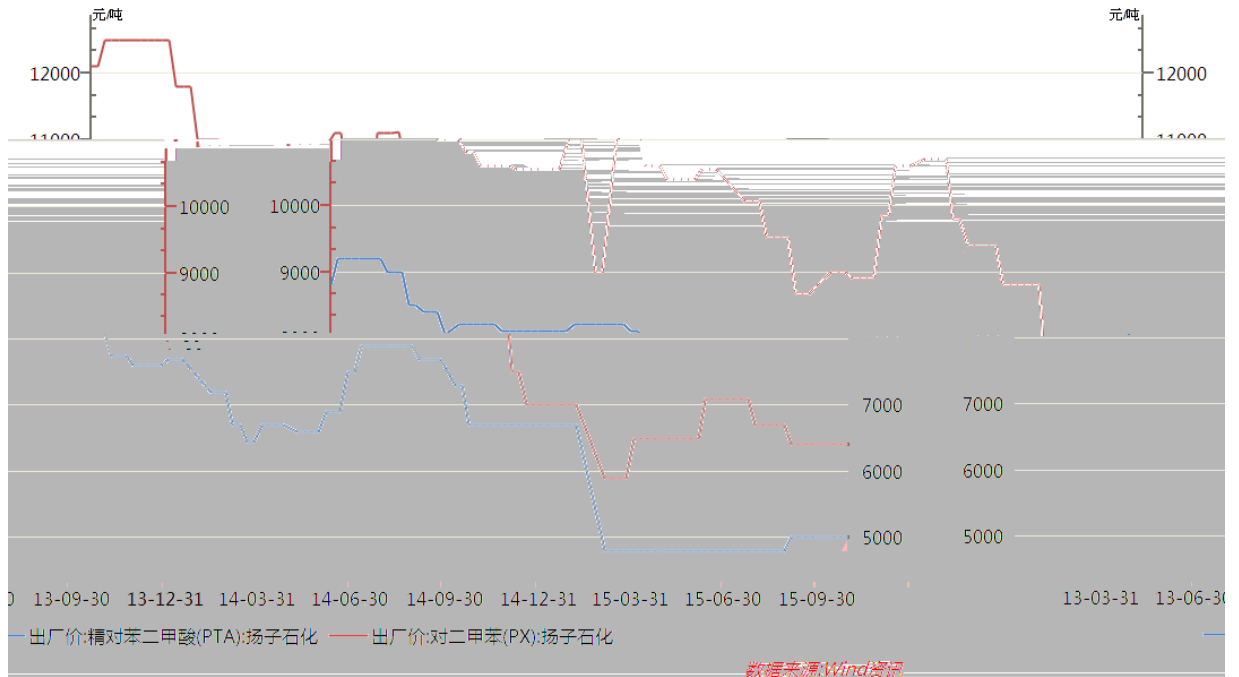
数据来源:Wind资讯

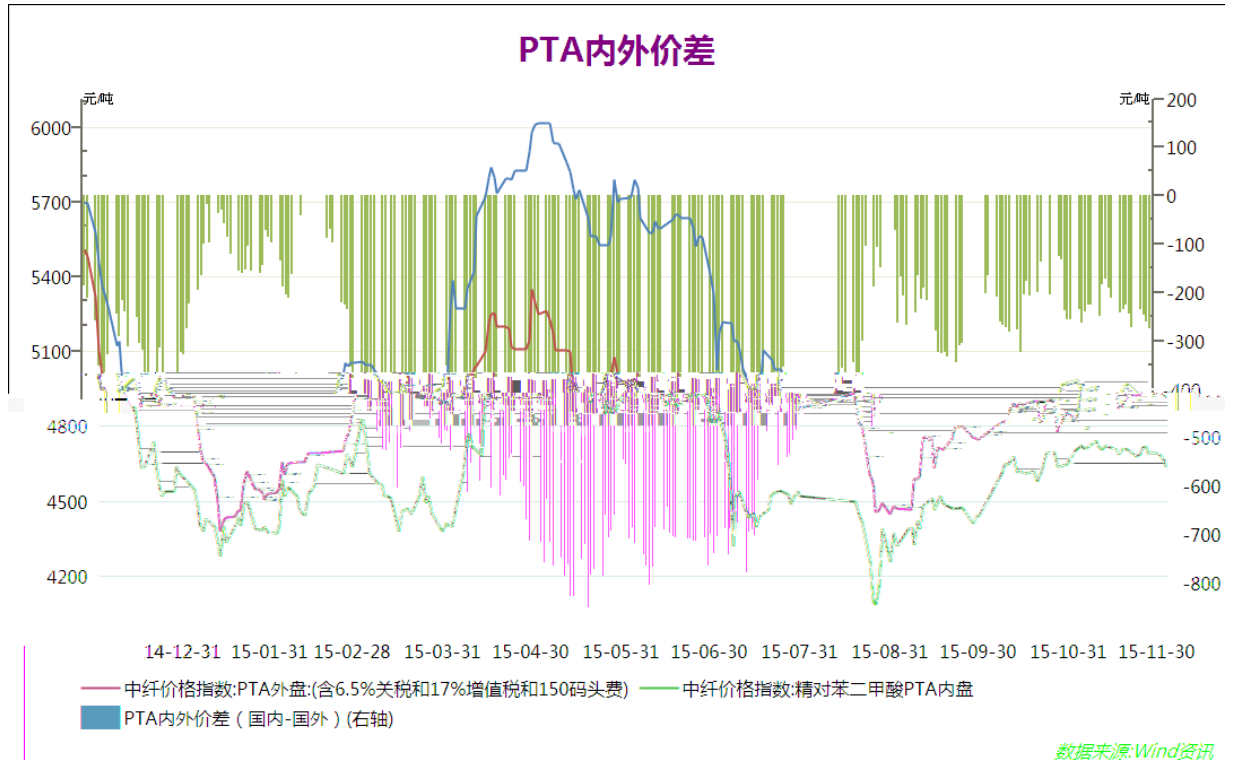
石脑油与PTA走势对比



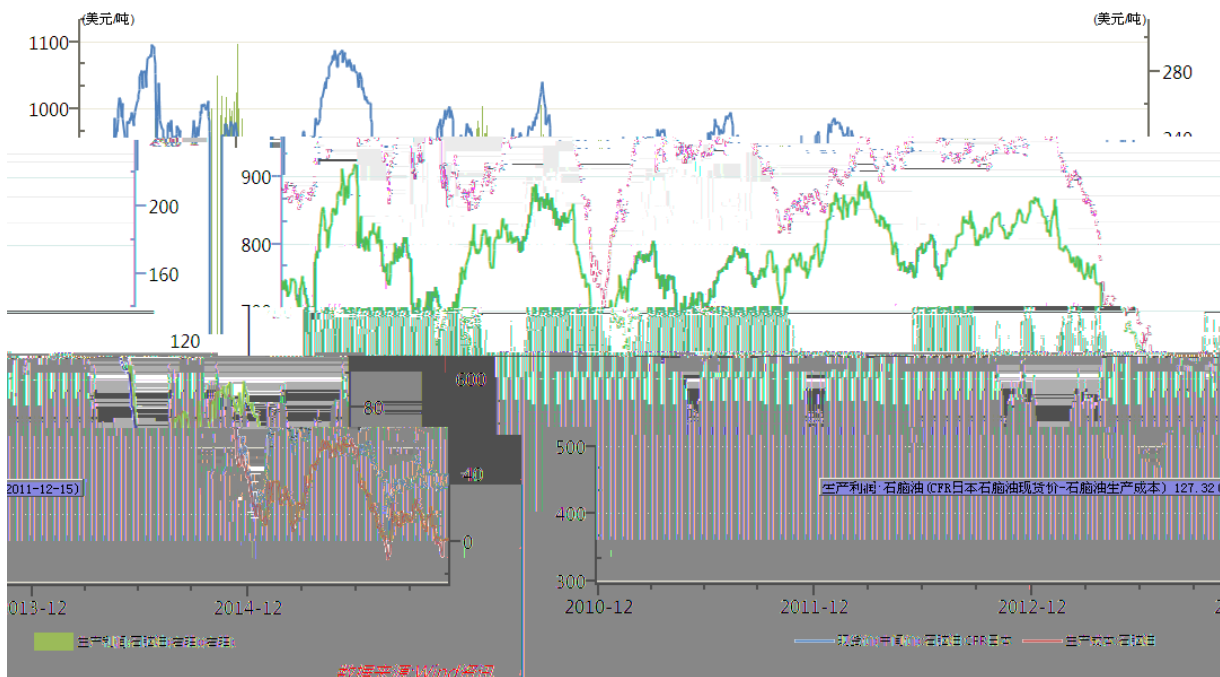
数据来源:Wind资讯

PX与PTA走势对比

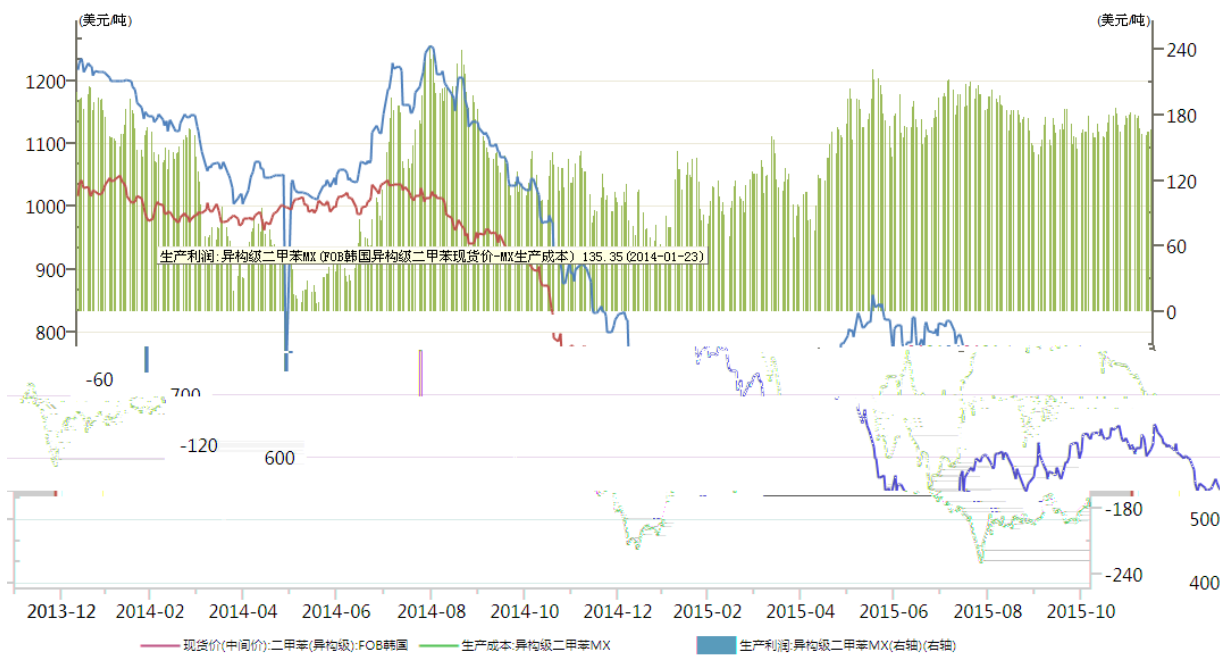




石脑油生产利润估算

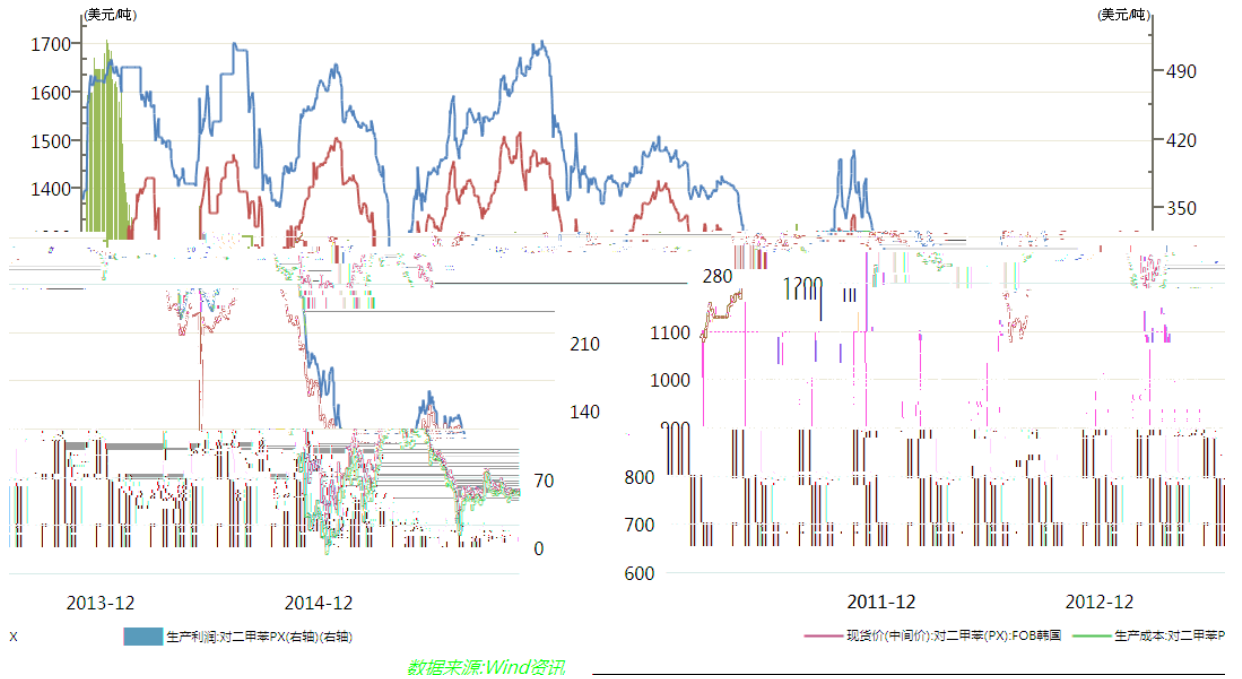


MX生产利润估算

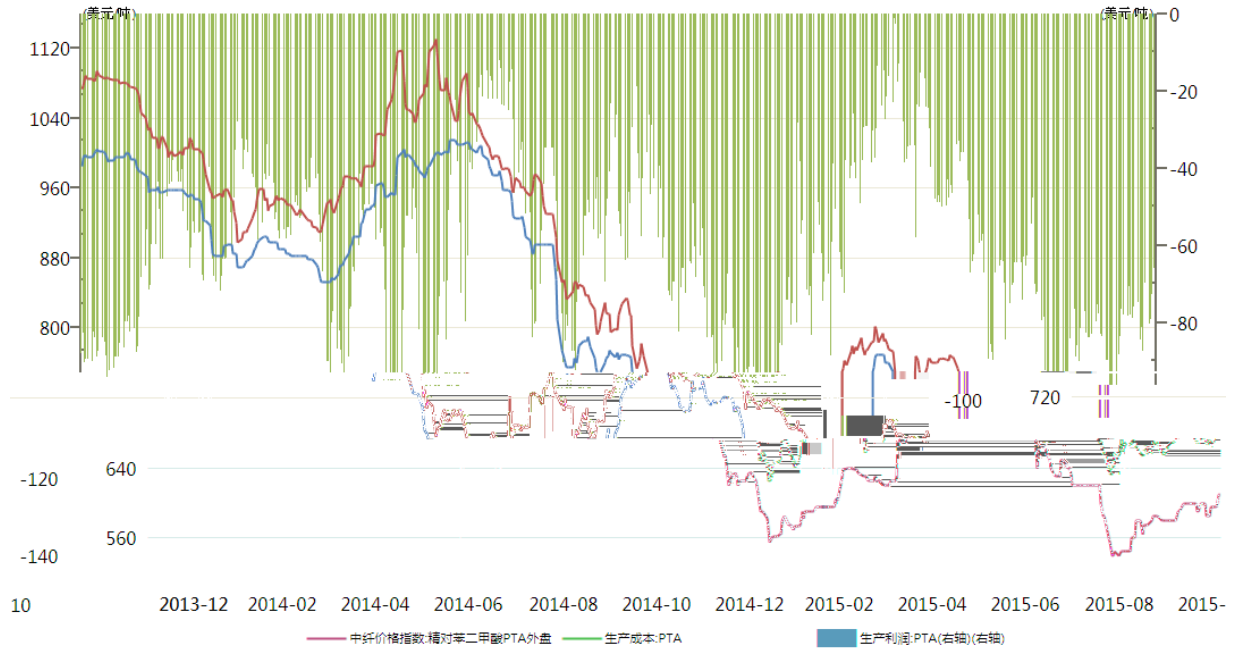


数据来源:Wind资讯

PX生产利润估算



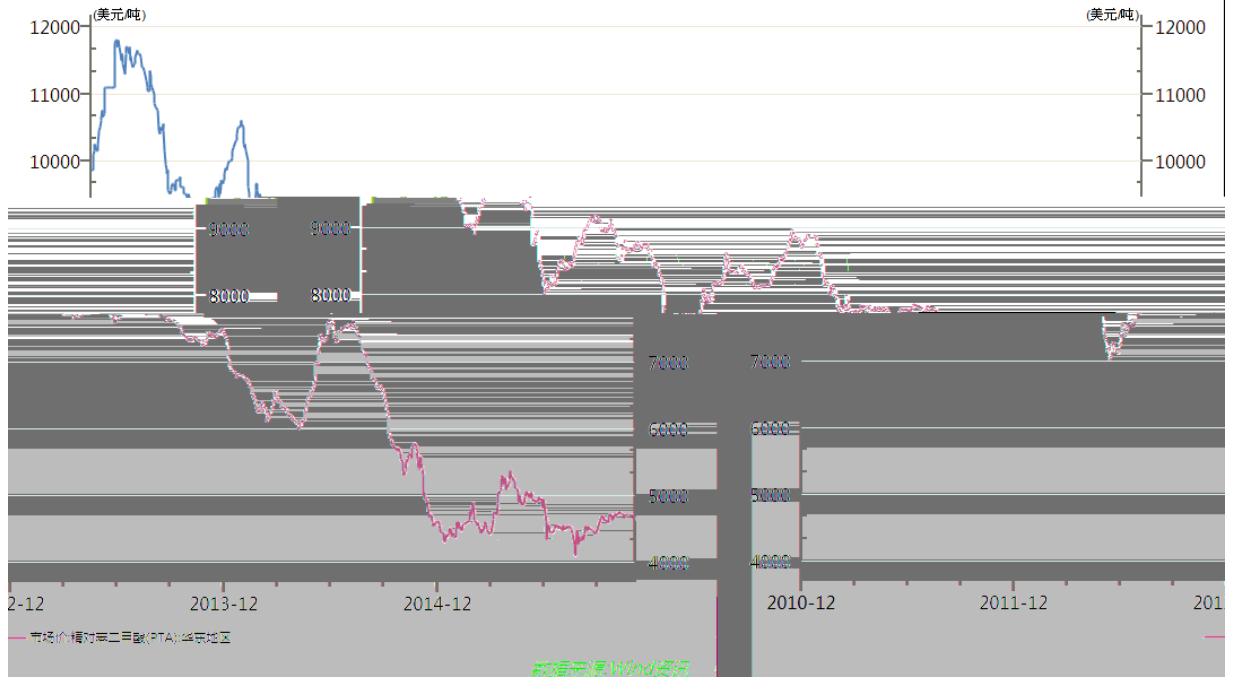
PTA生产利润估算



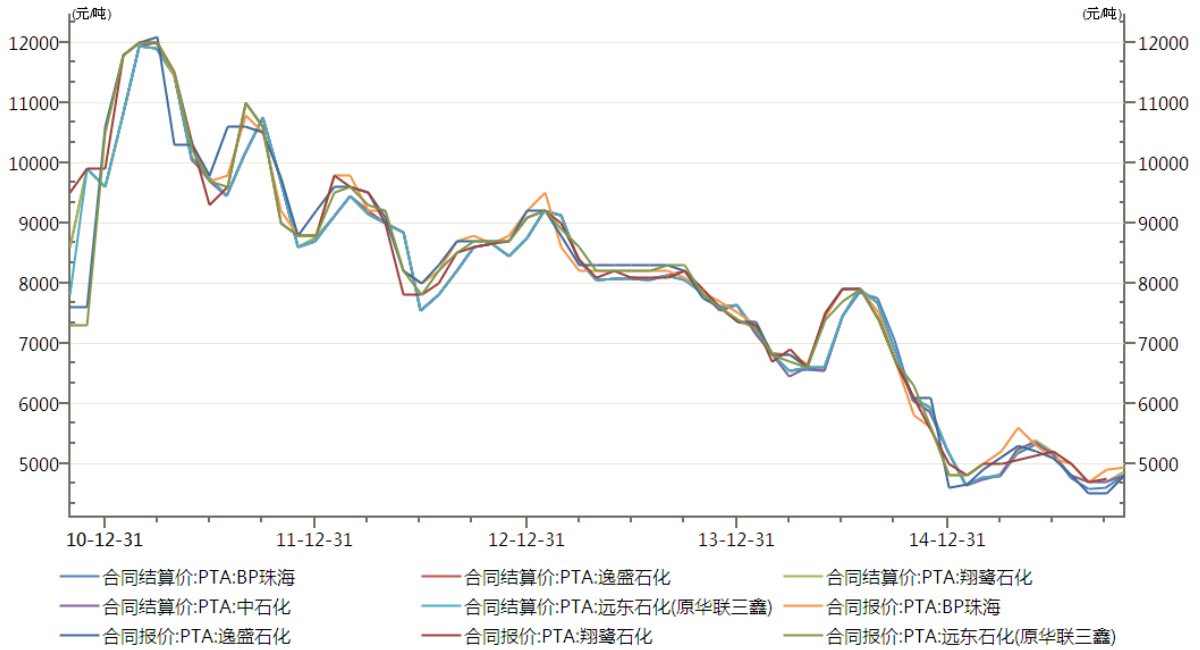
资讯

数据来源:Winc

华东地区PTA现货价

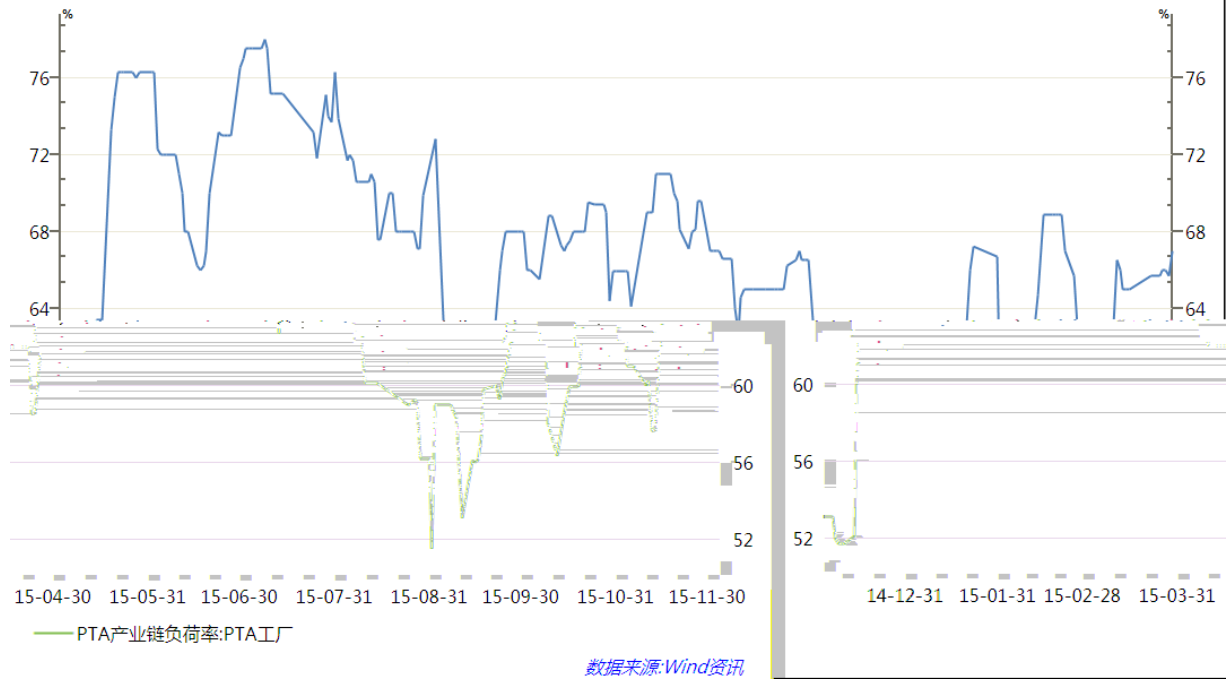


PTA厂商合同结算价



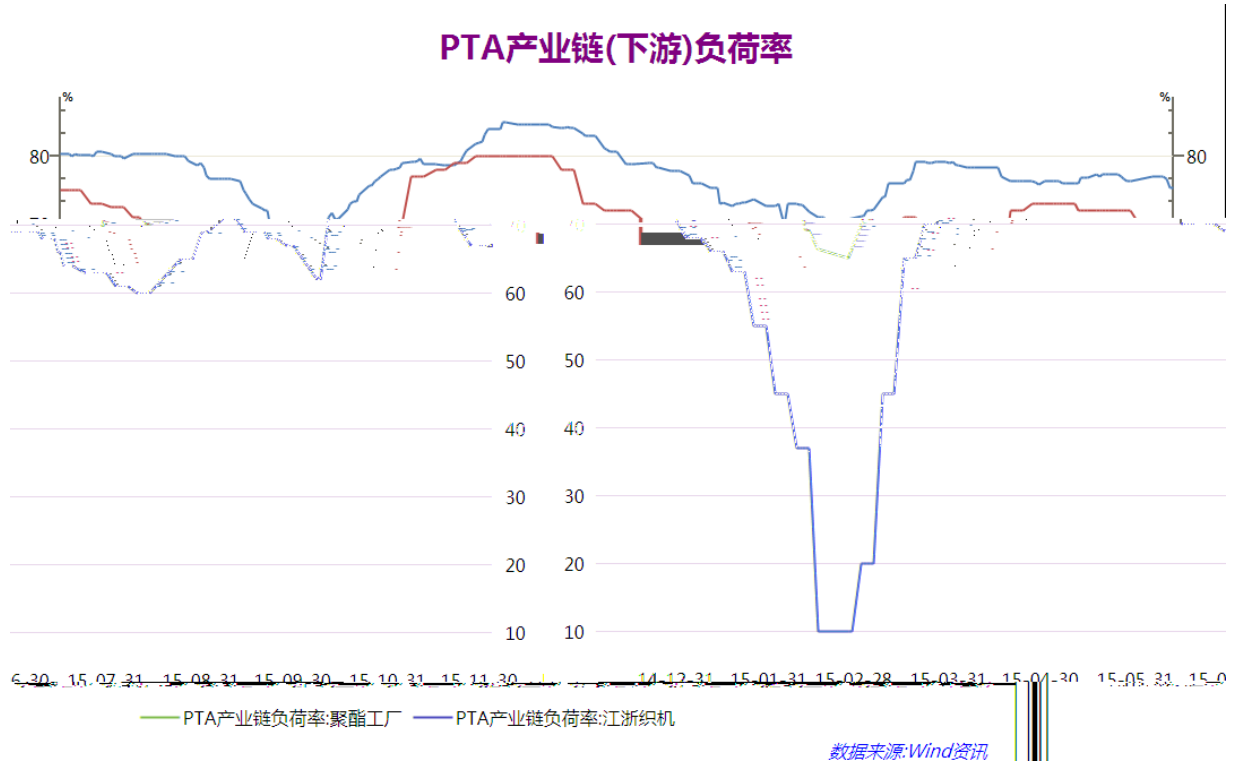
数据来源:Wind资讯

PTA产业链(生产)负荷率

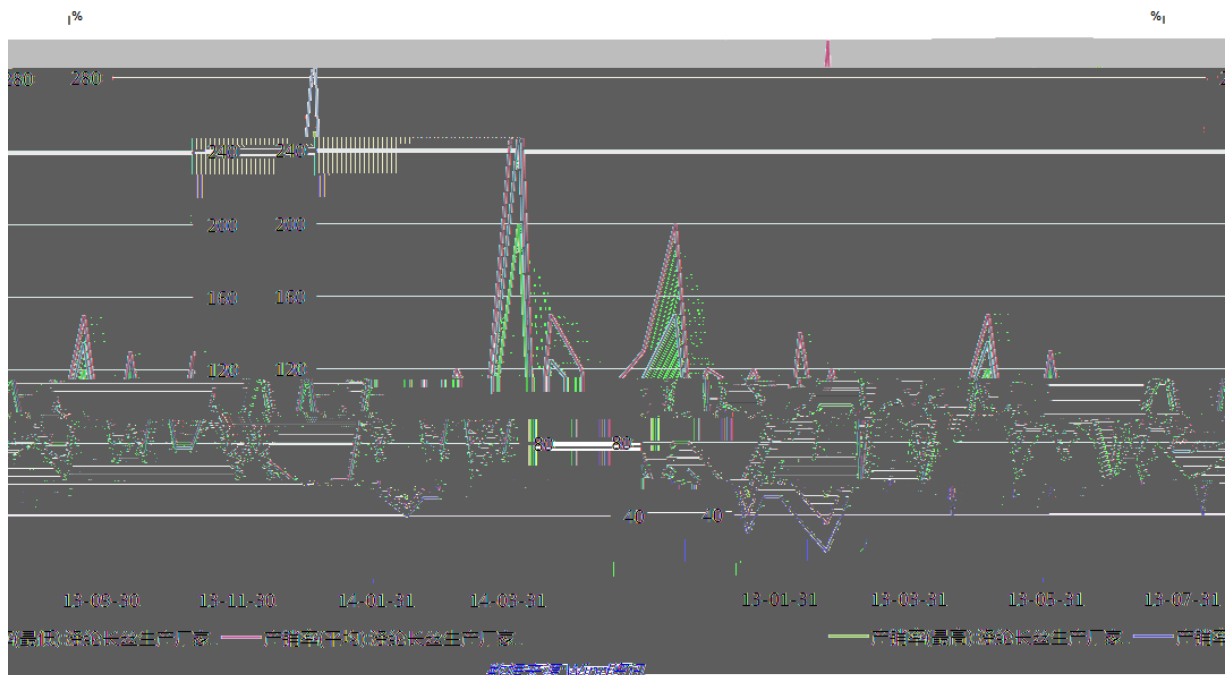


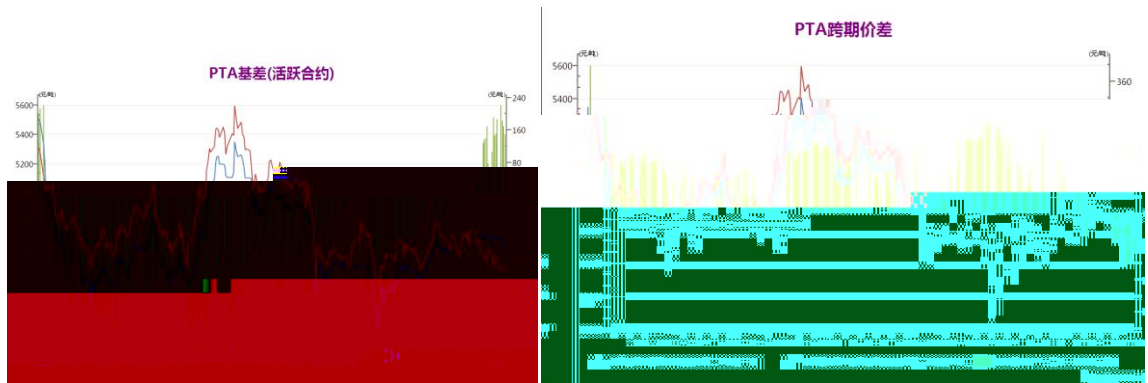
PTA 2016 1 3

PTA产业链(下游)负荷率



涤纶长丝生产厂家产销率

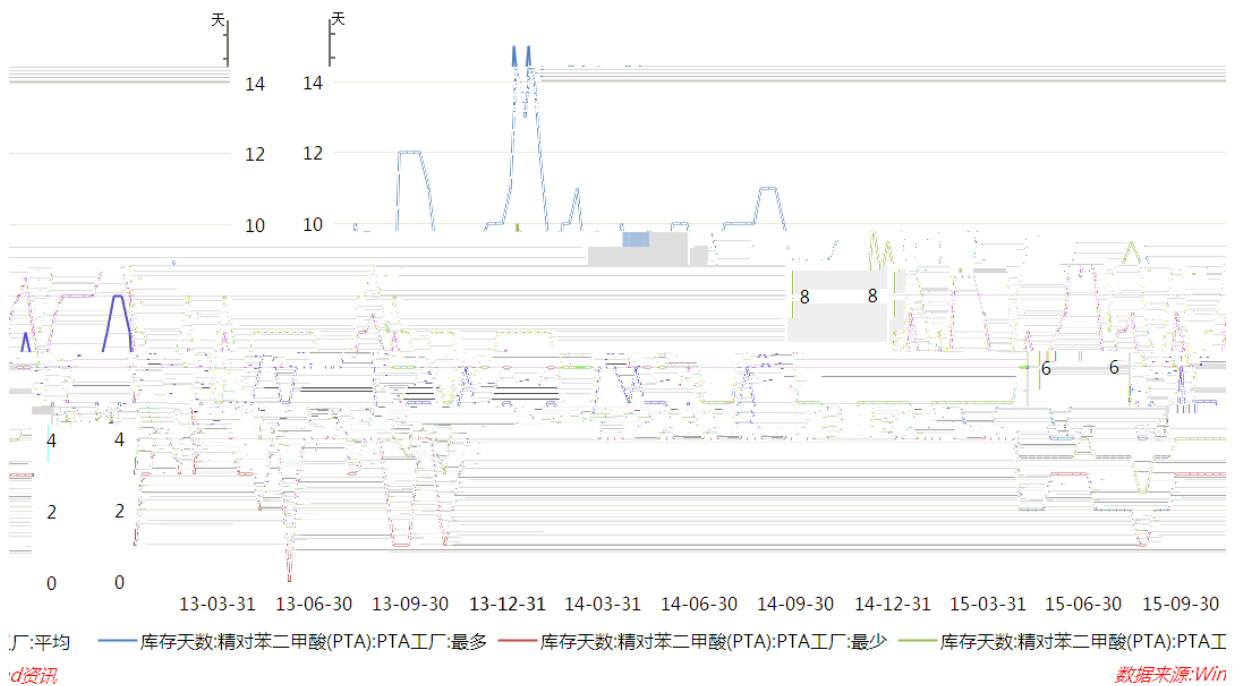




wind

6 PTA

国内PTA库存(PTA工厂)

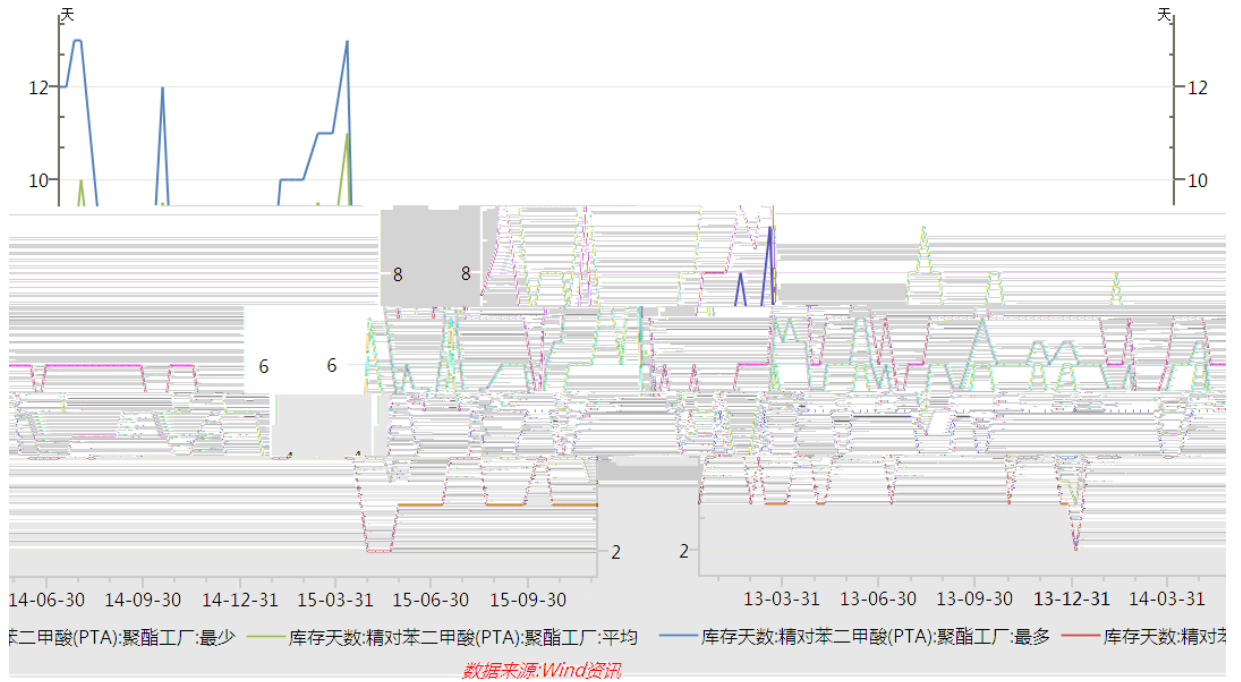


d资讯

数据来源:Win

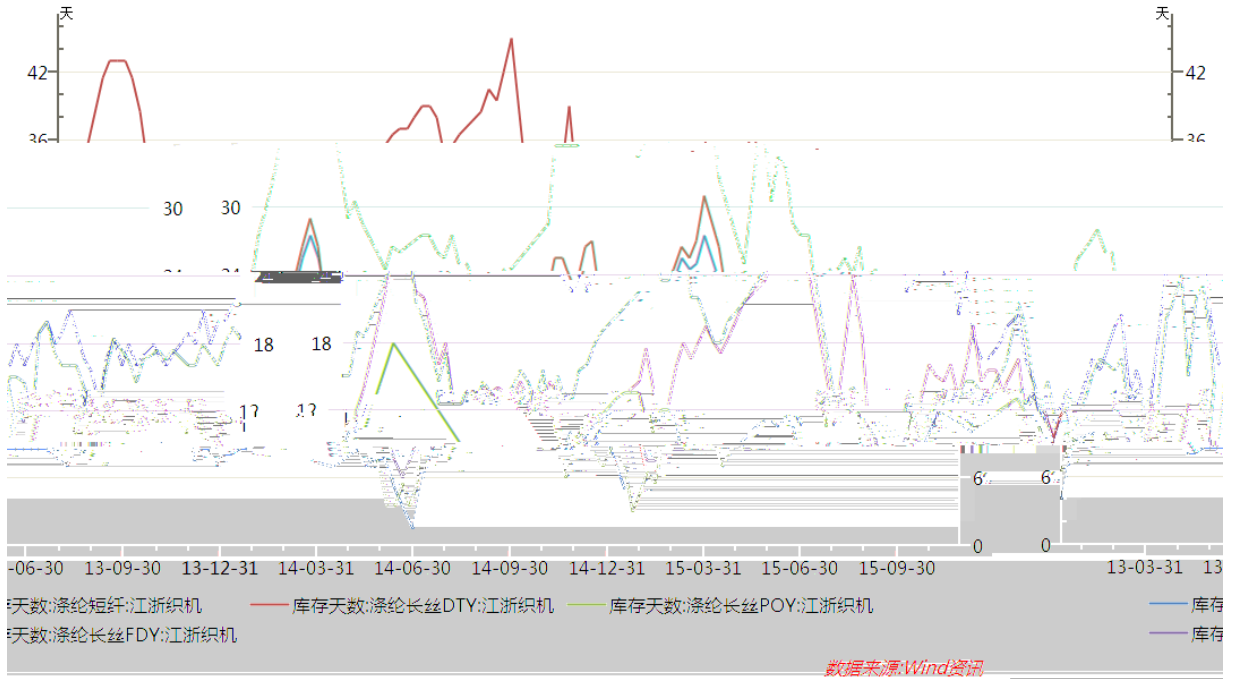
wind

国内PTA库存(聚酯工厂)

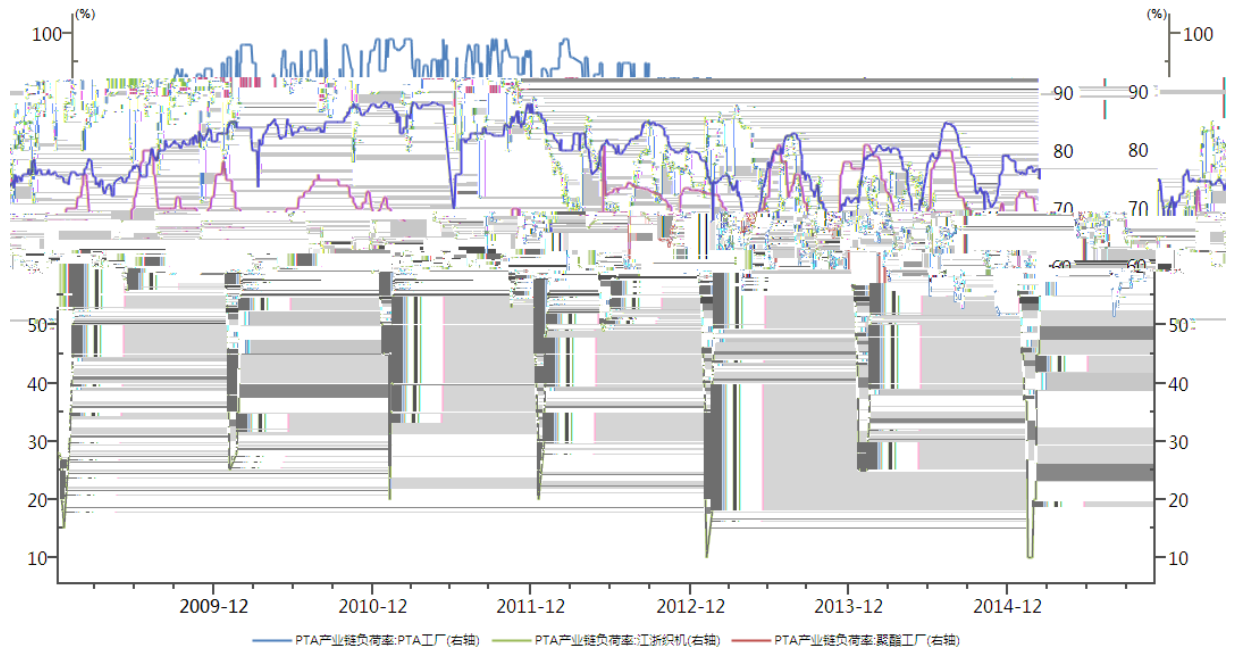


wind

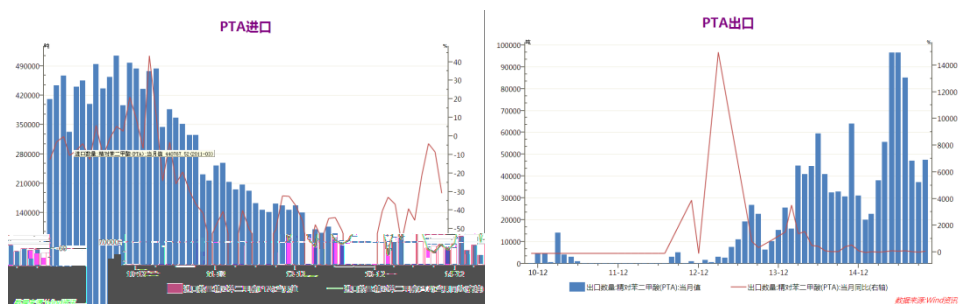
长丝、短纤库存(江浙织机)



PTA产业链工厂开工率

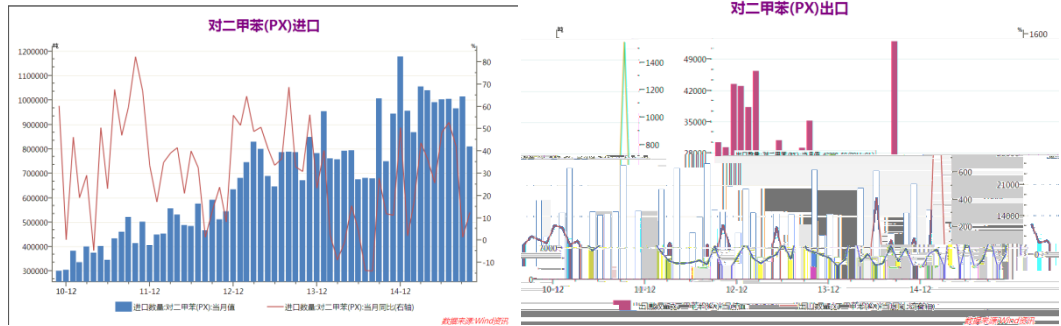


数据来源:Wind资讯



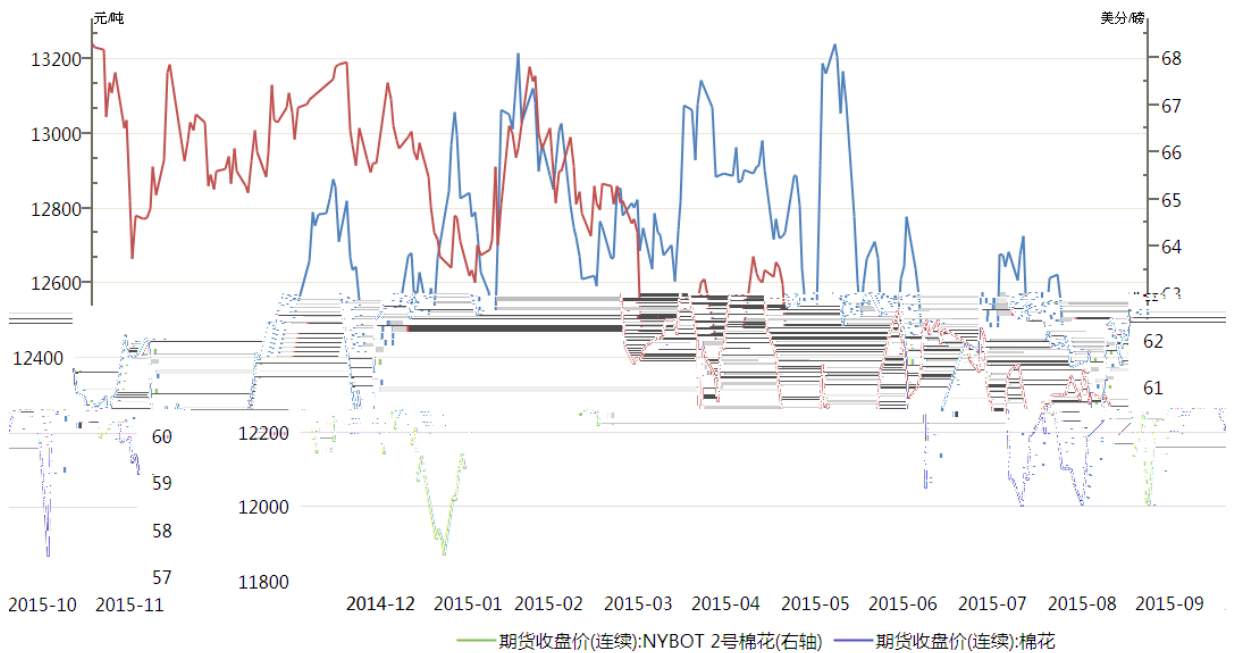
wind

PTA 2016 1 3



wind

内外棉期货价格走势



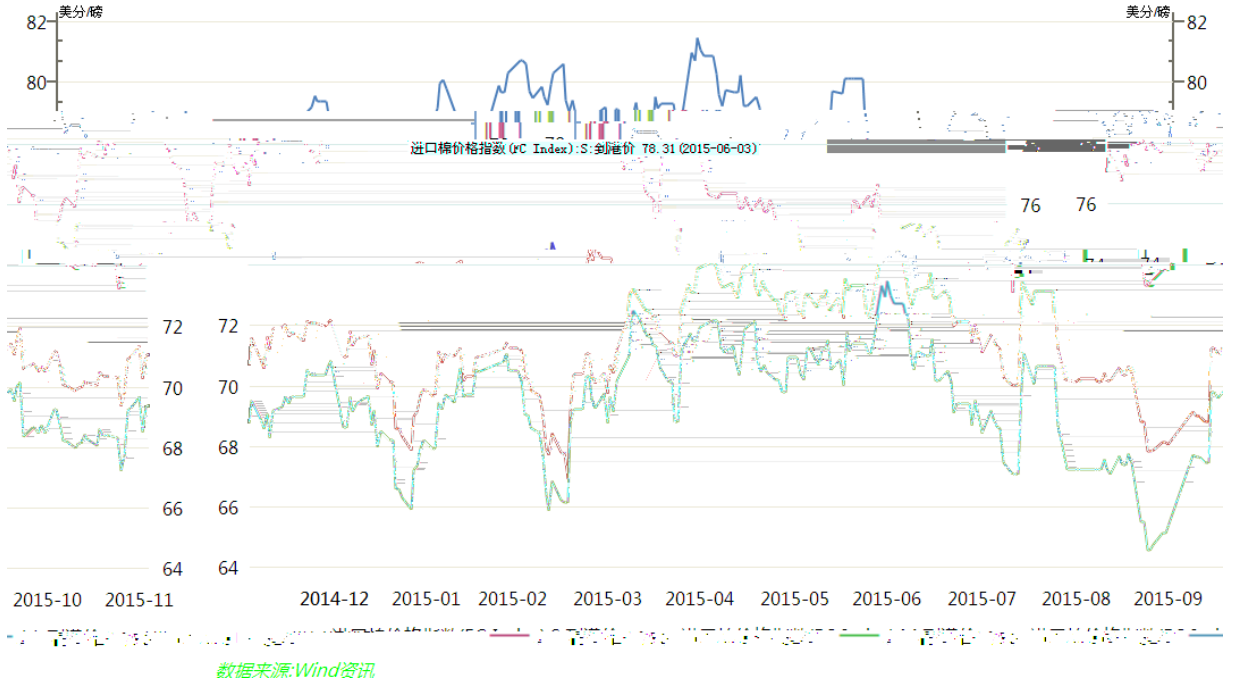
数据来源: Wind资讯

wind

PTA 2016 1 3

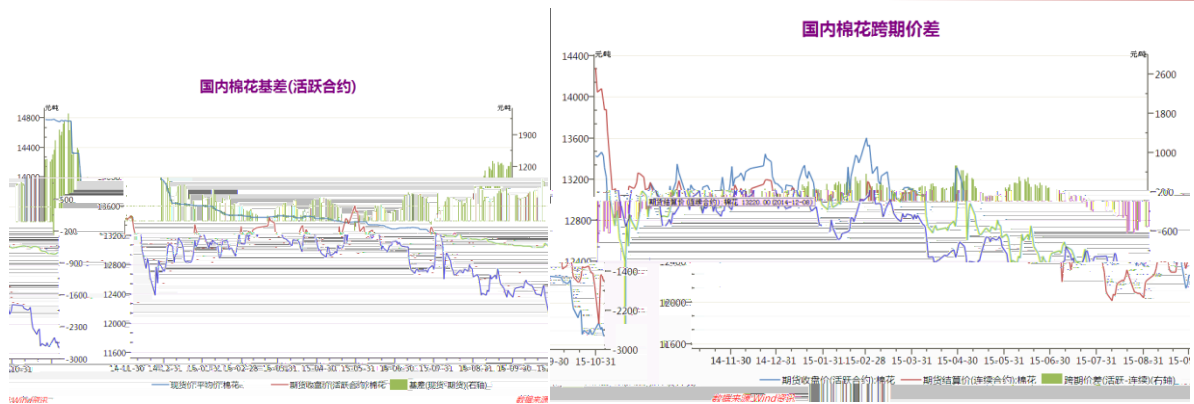
2

各等级棉进口到岸价指数



wind

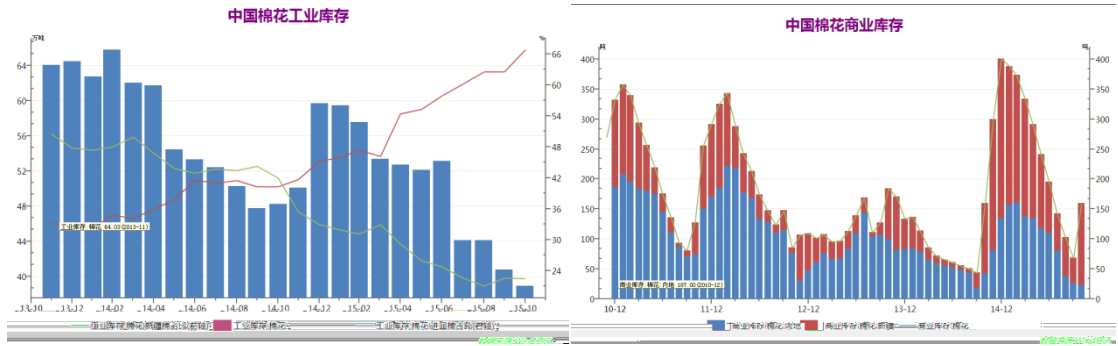
3



wind

PTA 2016 1 3

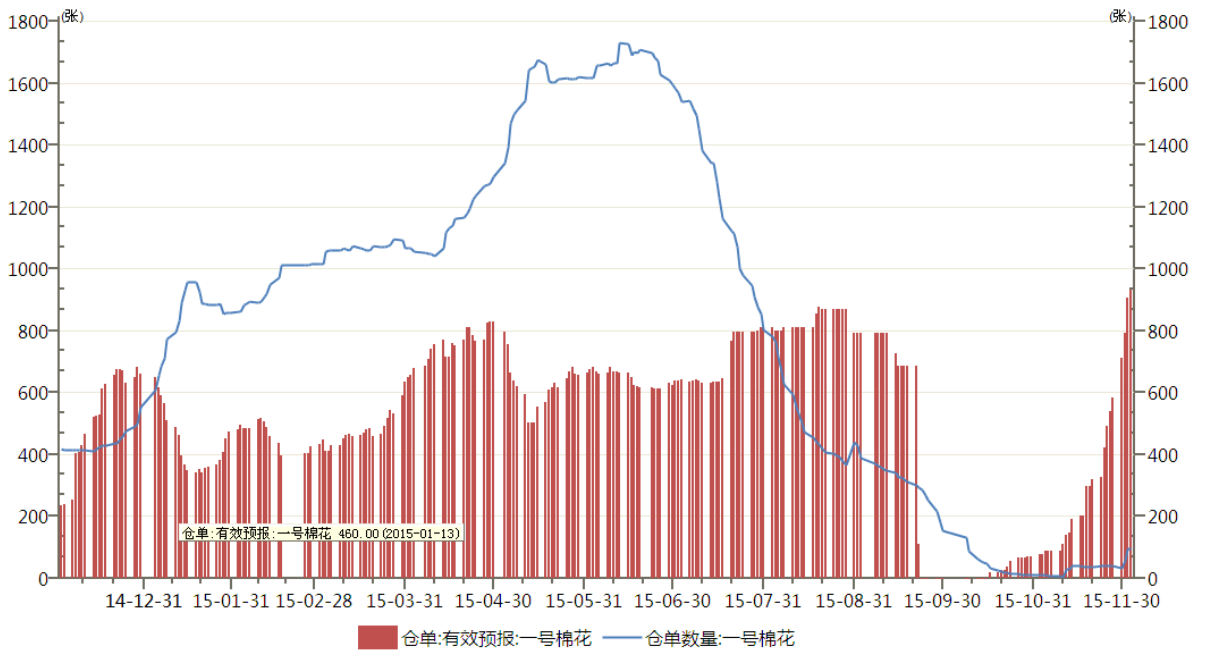
4



wind

5

郑棉注册仓单与有效预报仓单



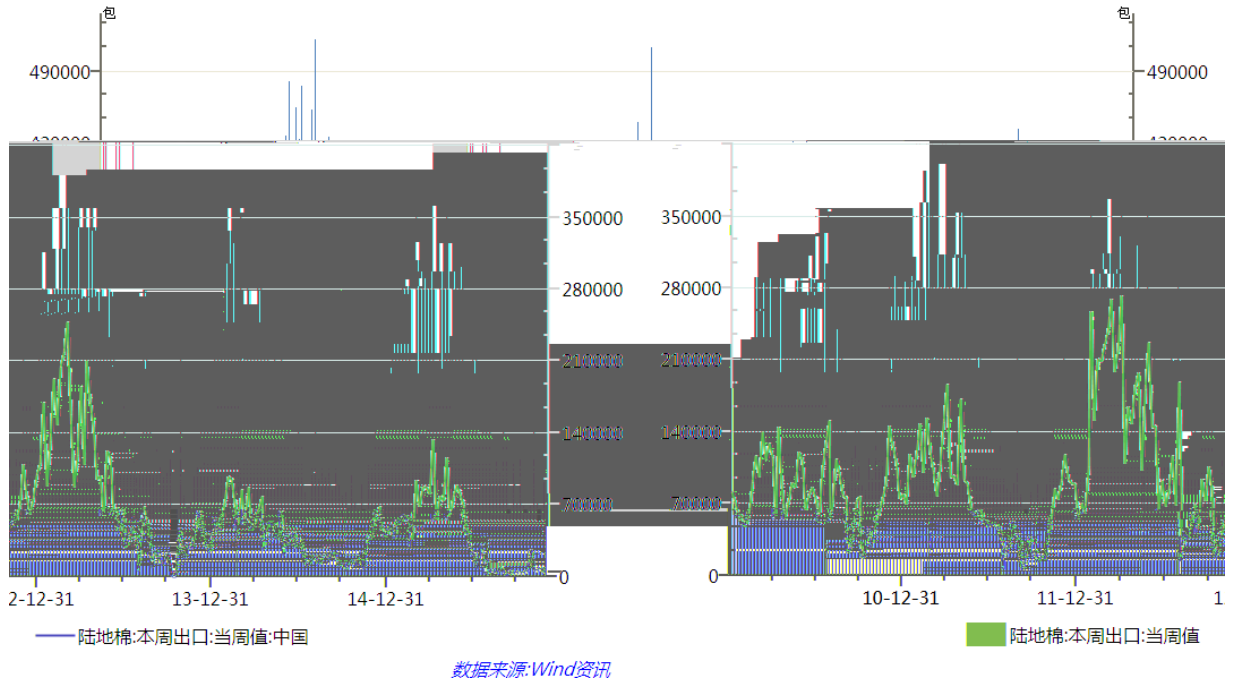
数据来源:Wind资讯

wind

6

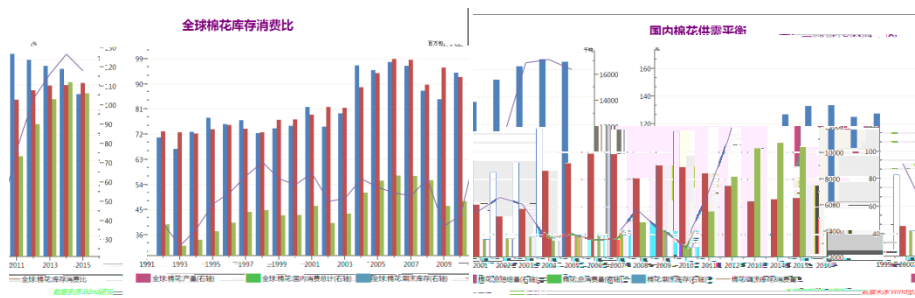
PTA 2016 1 3

美陆地棉周度出口



Wind

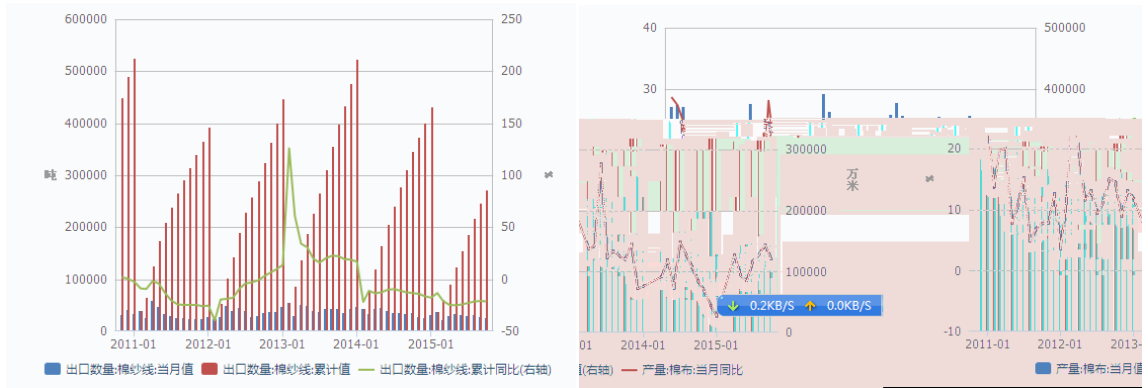
7



wind

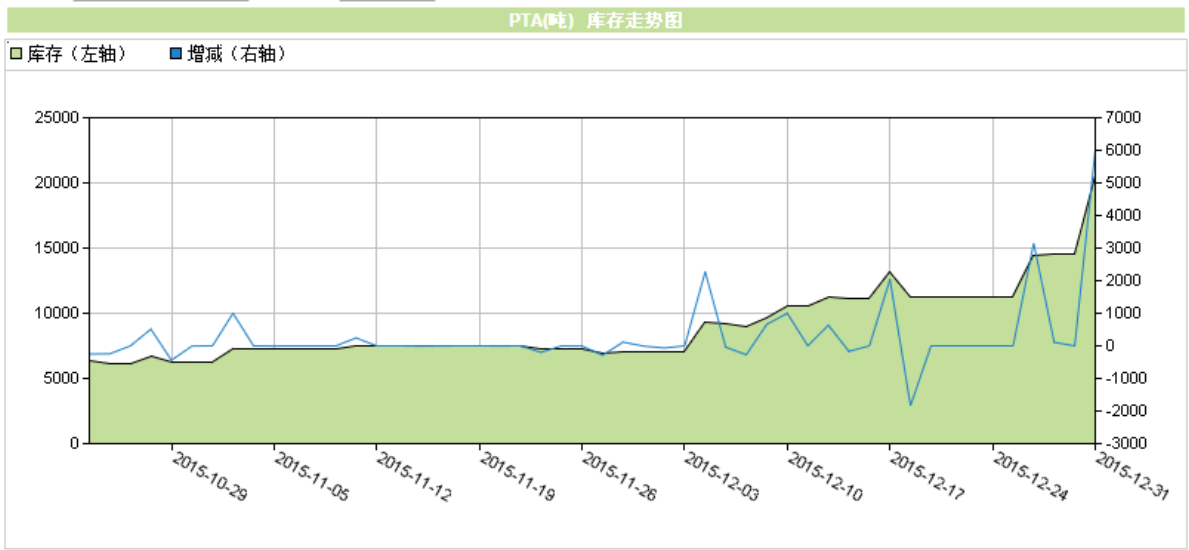
(8)

PTA 2016 1 3



wind

PTA

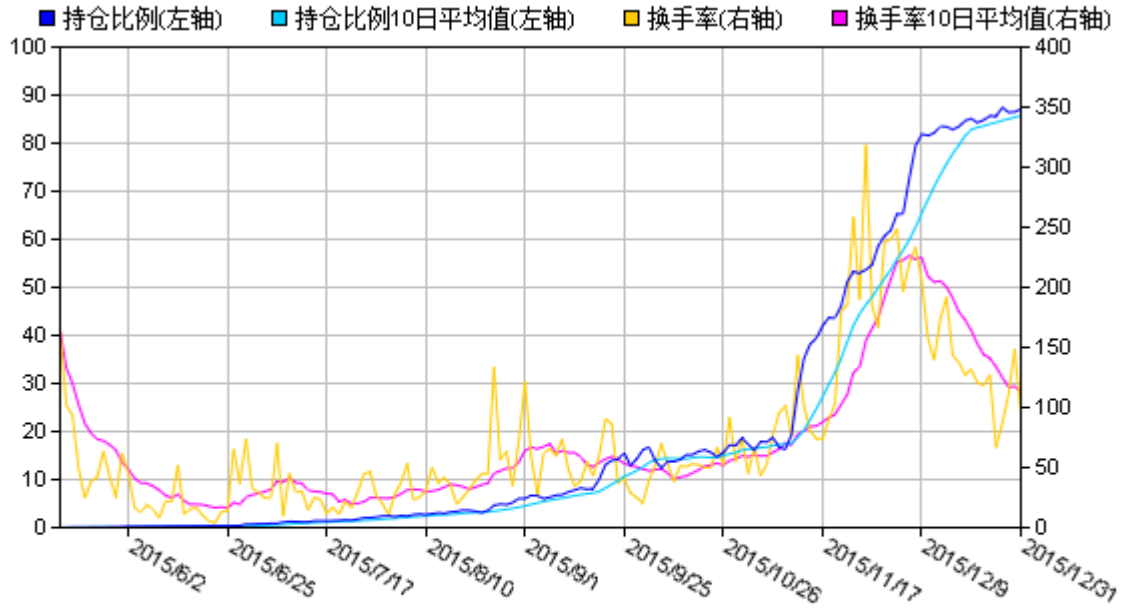


最新数据

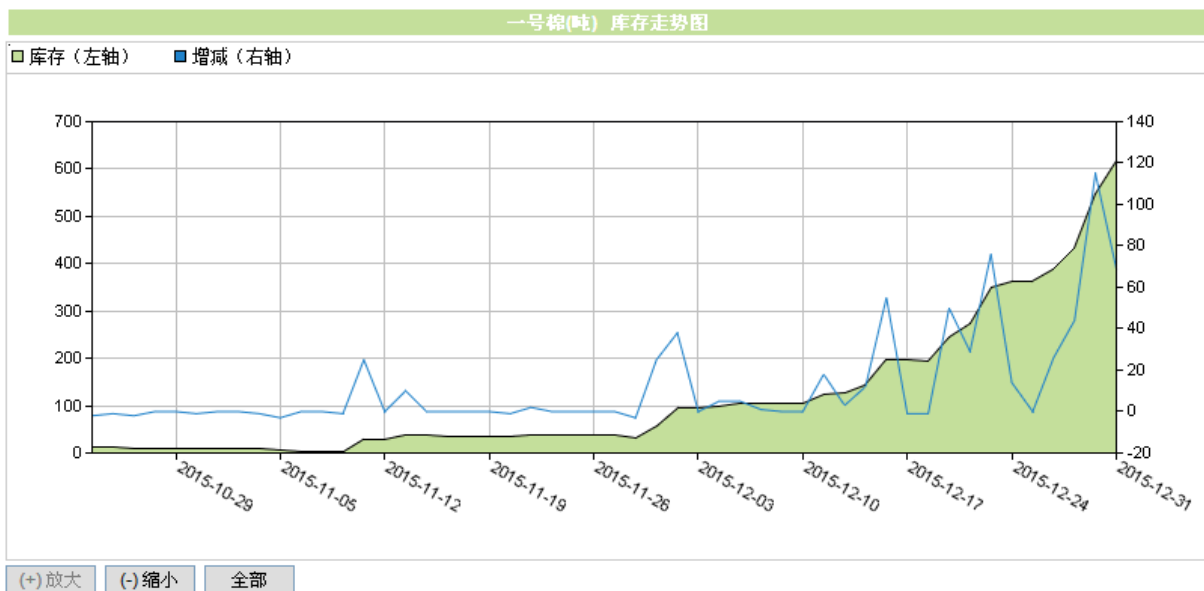
12-21	2015-12-18
11290	11290
0	-1840

日期	2015-12-31	2015-12-30	2015-12-29	2015-12-28	2015-12-25	2015-12-24	2015-12-23	2015-12-22	2015-
库存	20542	14536	14536	14426	11274	11274	11290	11290	
增减	6006	0	110	3152	0	0	0	0	

TA605

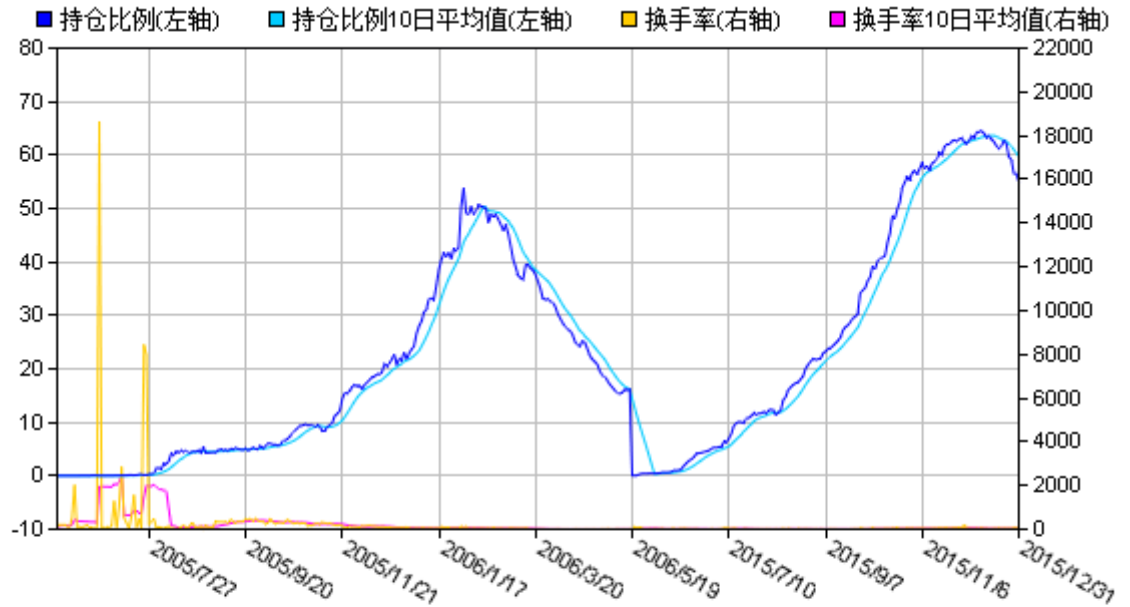


	2015/12/31	2015/12/30	2015/12/29	2015/12/28	2015/12/27
单项持仓与持仓总量比例(%)	87.09	86.50	86.45	87.41	85.61
持仓比例10日平均值(%)	85.76	85.39	85.03	84.72	84.31
换手率(%)	94.86	148.22	110.60	86.91	66.61
换手率10日平均值(%)	113.20	117.44	116.98	125.08	133.71



最新数据

日期	2015-12-31	2015-12-30	2015-12-29	2015-12-28	2015-12-25	2015-12-24	2015-12-23	2015-12-22	2015-12-21	2015-12-18
库存	617	548	433	389	363	363	349	273	244	195
增减	69	115	44	26	0	14	76	29	50	-1



	2015/12/31	2015/12/30	2015/12/29	2015/12/28	2015/12/27	▲
持仓比例10日平均值(%)	62.1	59.61	60.37	61.01	61.01	6
换手率(%)	1.72	1.38	39.07	56.56	59.38	3
换手率10日平均值(%)	4.63	34.8	41.52	41.34	38.20	3

PTA 2016 1 3



	PTA	TA605		
			macd	0
macd	0		ta605	macd
0		macd	0	ta605
			ta605	
ta605		4300 /		
ta605			ta605	
ta605				
TA605				
4600 /				

cf605



:

cf605					
	macd	0		macd	0
	cf605			macd	0
	macd	0			
cf605					cf605
		11600	/		
	cf605				
	Cf605			11600	/

2015