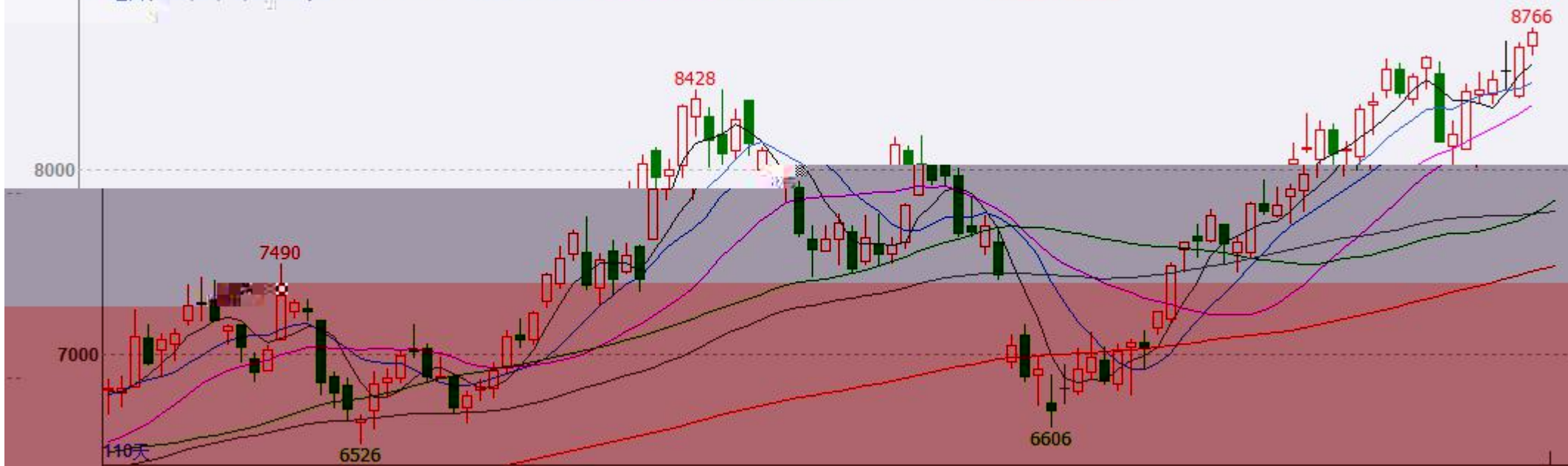
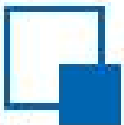


棕榈2109M (DCE p2109) 日线

MA组合(5,10,20,40,60,120) MA5 8568.80 MA10 8470.40 MA20 8344.00 MA40 7833.85 MA60 7776.83 MA120 7481.52



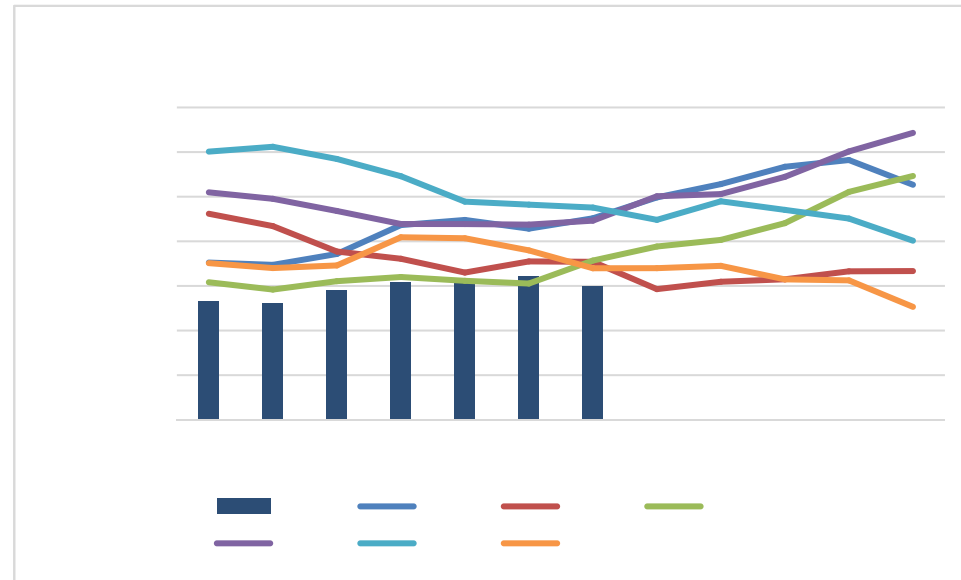
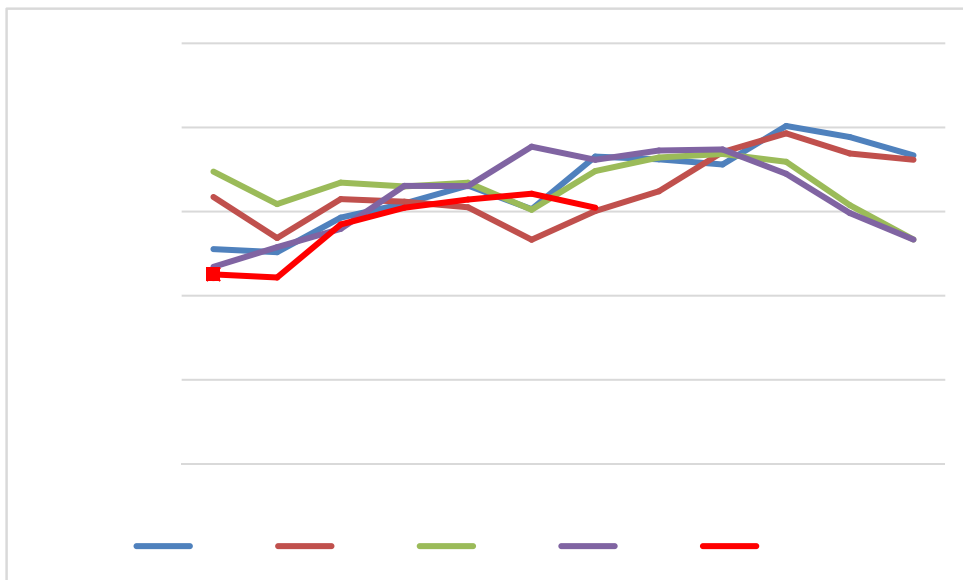
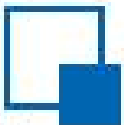


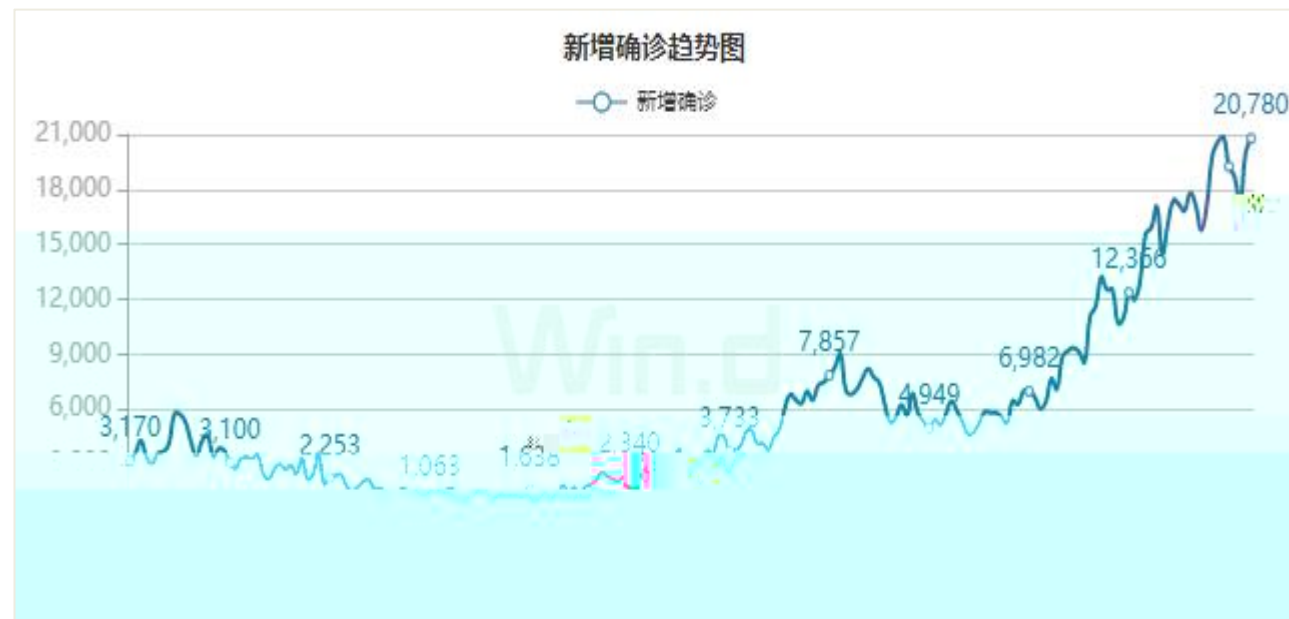
M B			

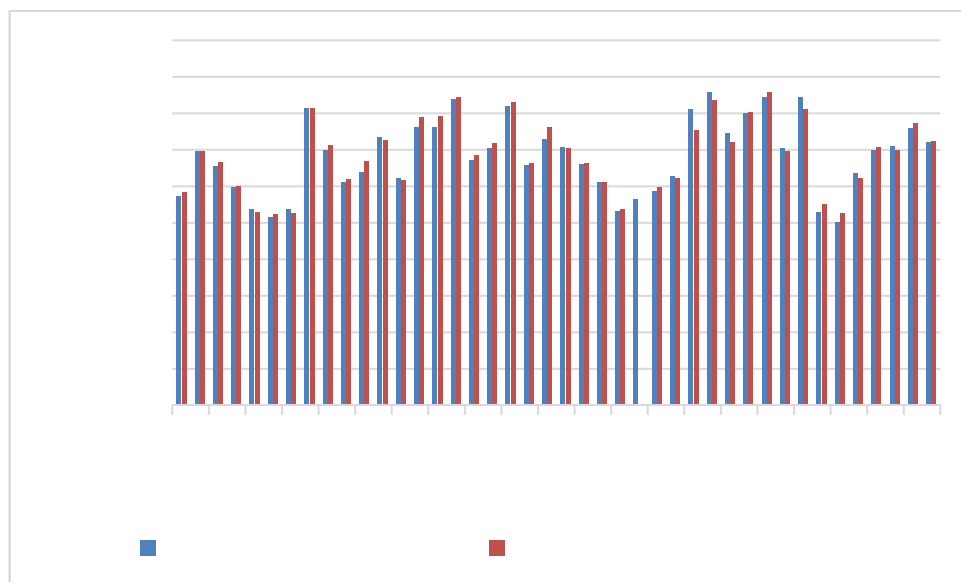
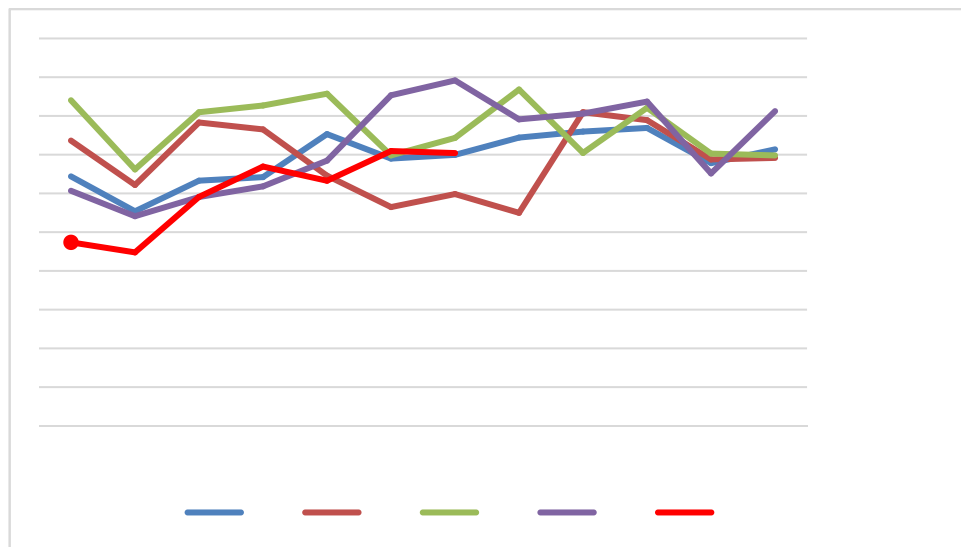
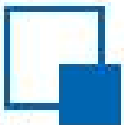
M B

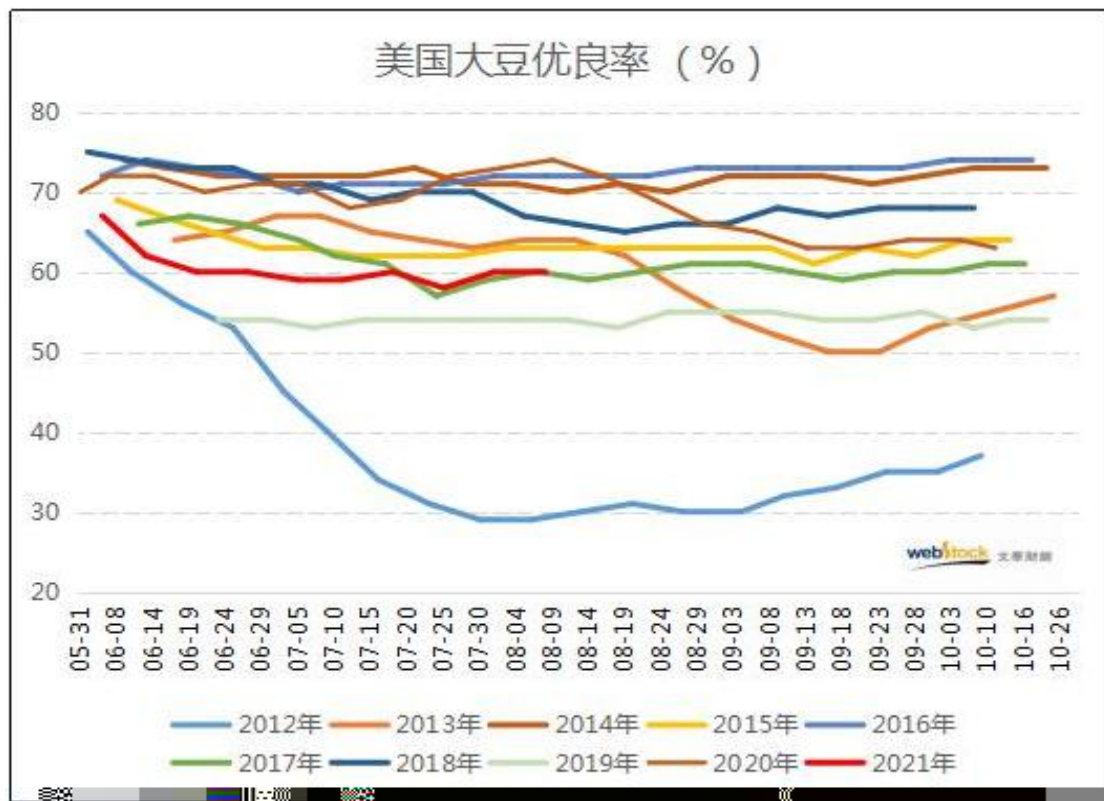
➤ M A

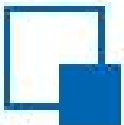
➤





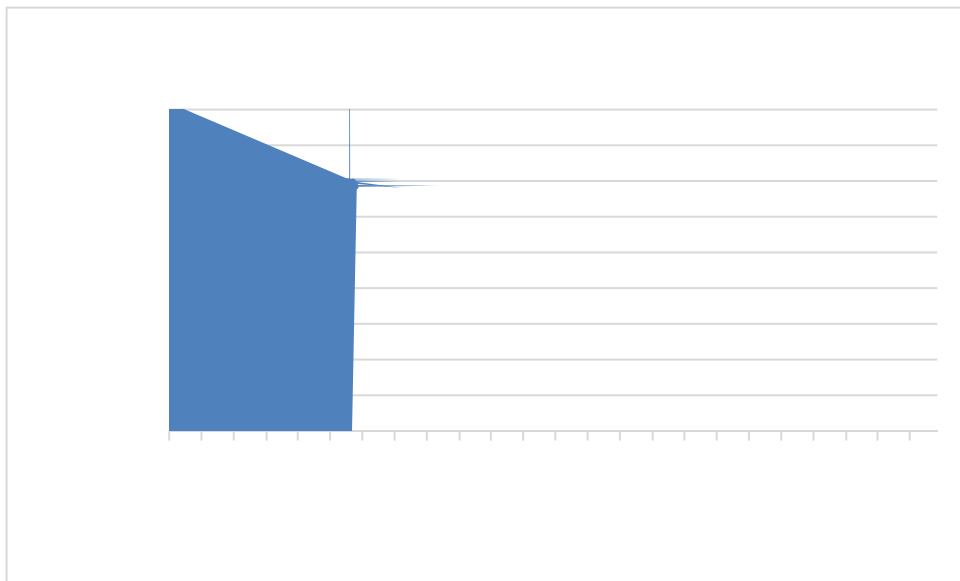
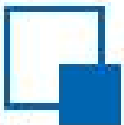






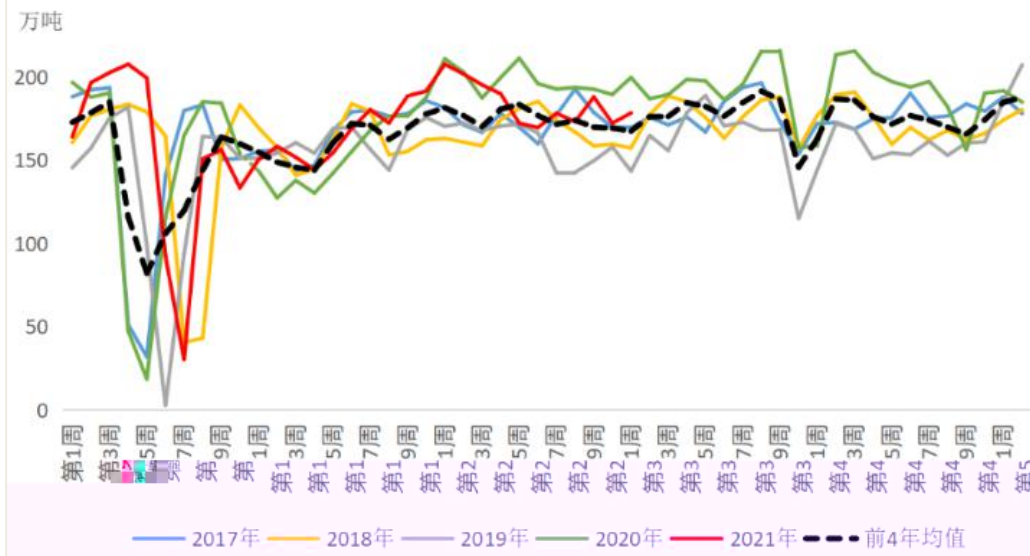
DA				



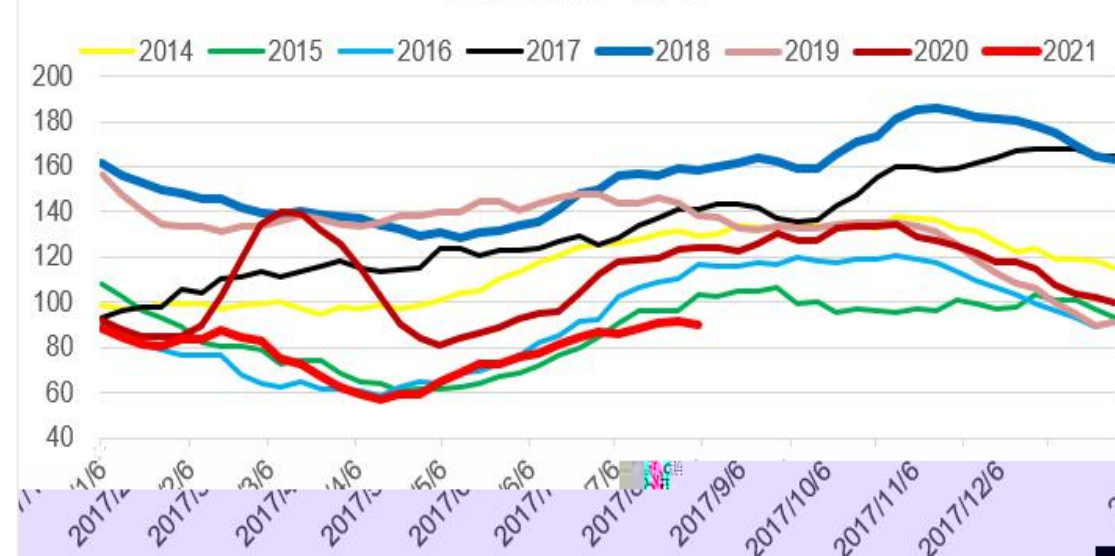


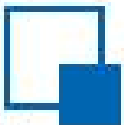


国内主要油厂周度大豆压榨量

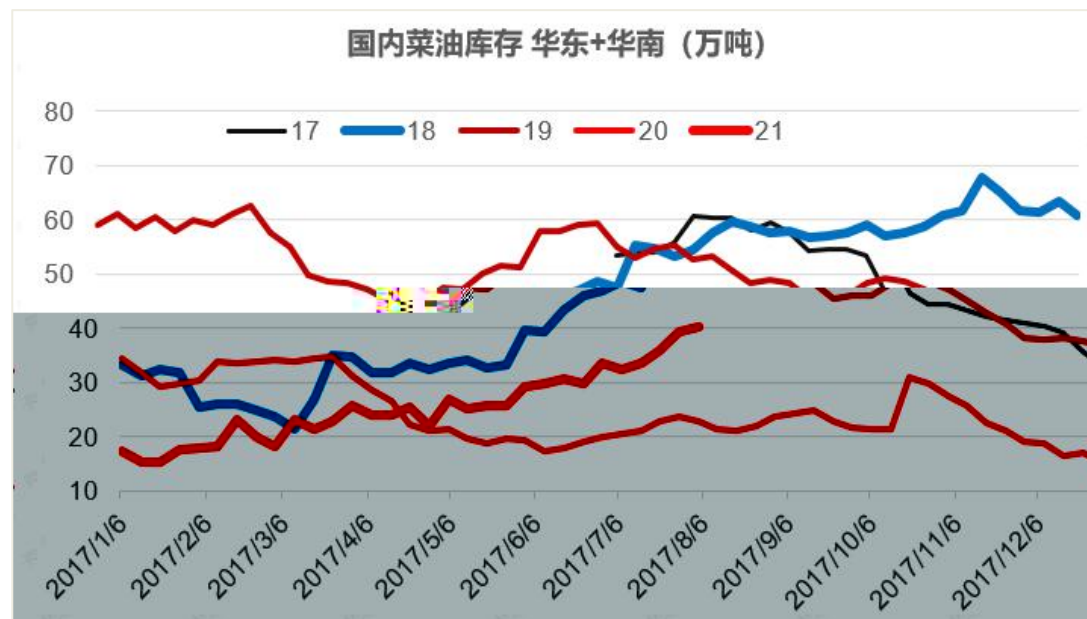


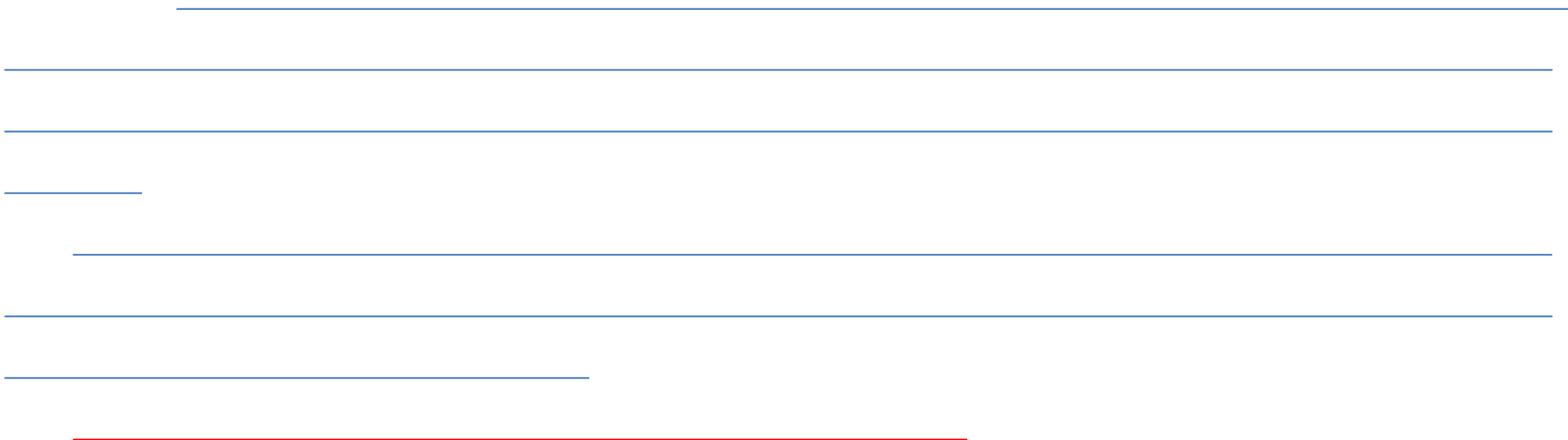
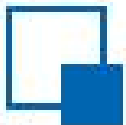
国内豆油库存 (万吨)

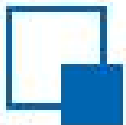




国内菜油库存 华东+华南 (万吨)







“

”



长安期货
CHANG-AN FUTURES

