

回归政策本源 & 疫情反弹扩散

原料分化成材震荡

投资咨询部 马舍瑞夫
投资咨询证号：Z0015873

2021年8月9日



7 30

2030

" "

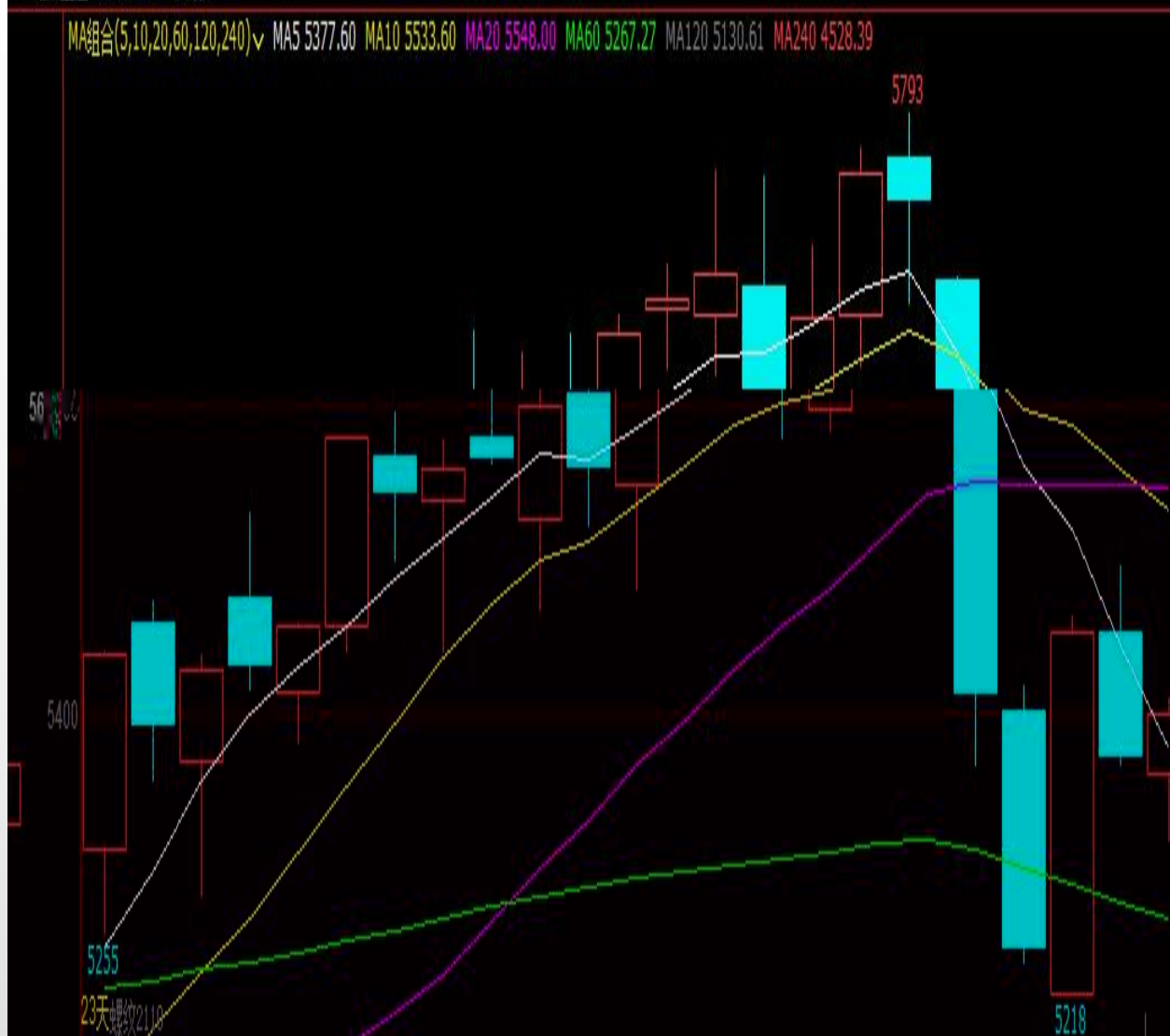
" "



" " " "

" "

螺纹主连(SHFE 6894) 日线

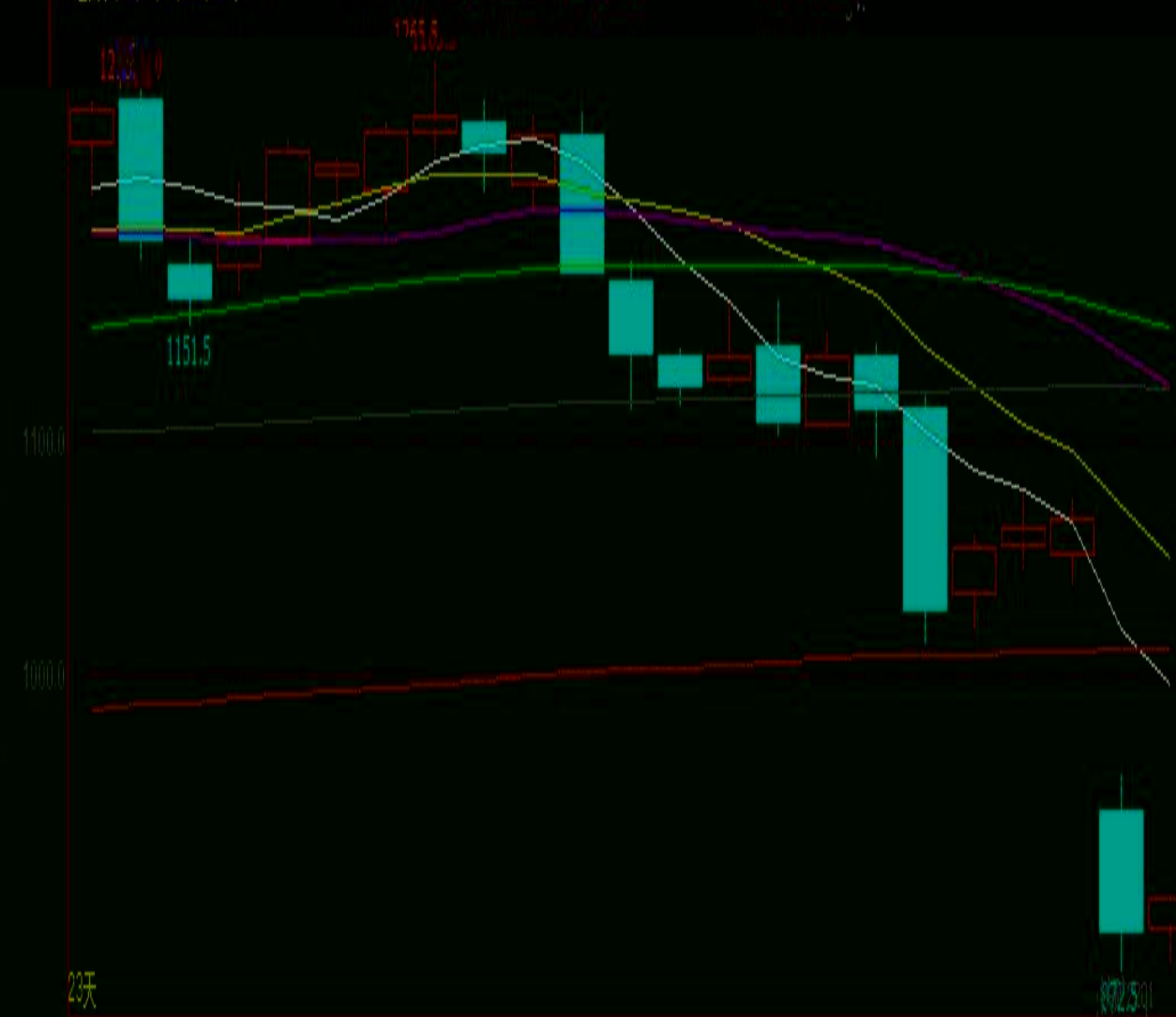


热卷主连(SHFE 2453) 日线



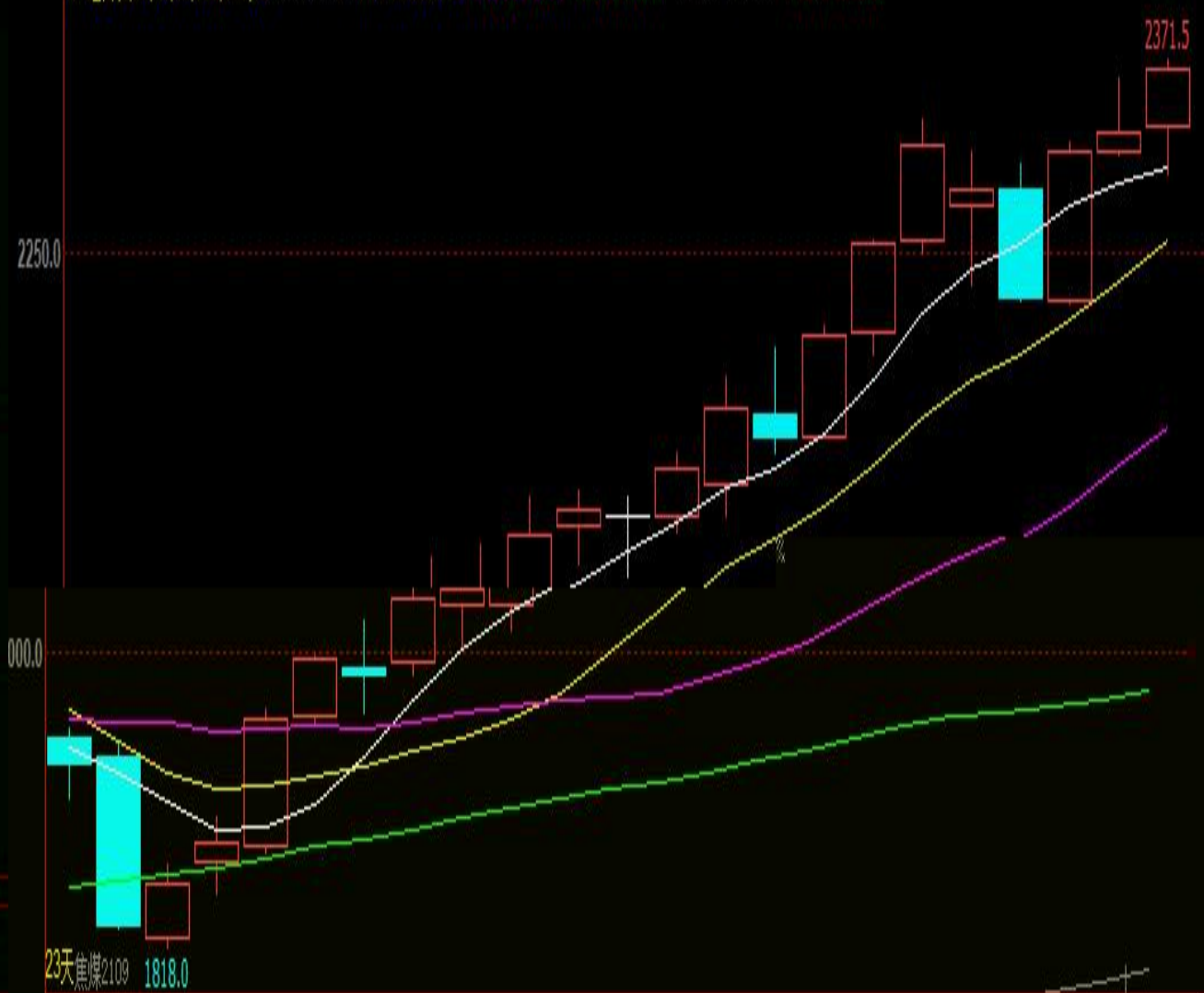
铁矿主连(DCE 1934) 日线

MA组合(5,10,20,60,120,240) MA5 994.80 MA10 1049.90 MA20 1125.05 MA60 1149.83 MA120 1122.98 MA240 1010.45



焦煤主连(DCE 8394) 日线

MA组合(5,10,20,60,120,240) MA5 2302.90 MA10 2257.50 MA20 2142.00 MA60 1978.07 MA120 1803.03 MA240 1612.86



2100 1818.0



7 30

2030

"

"

"

"

"

"

"

"



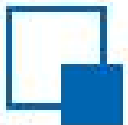
“ ” “ ” “ ” “ ”

“ ” “ ”

全国疫情新增趋势图

—○— 新增确诊 —○— 新增疑似



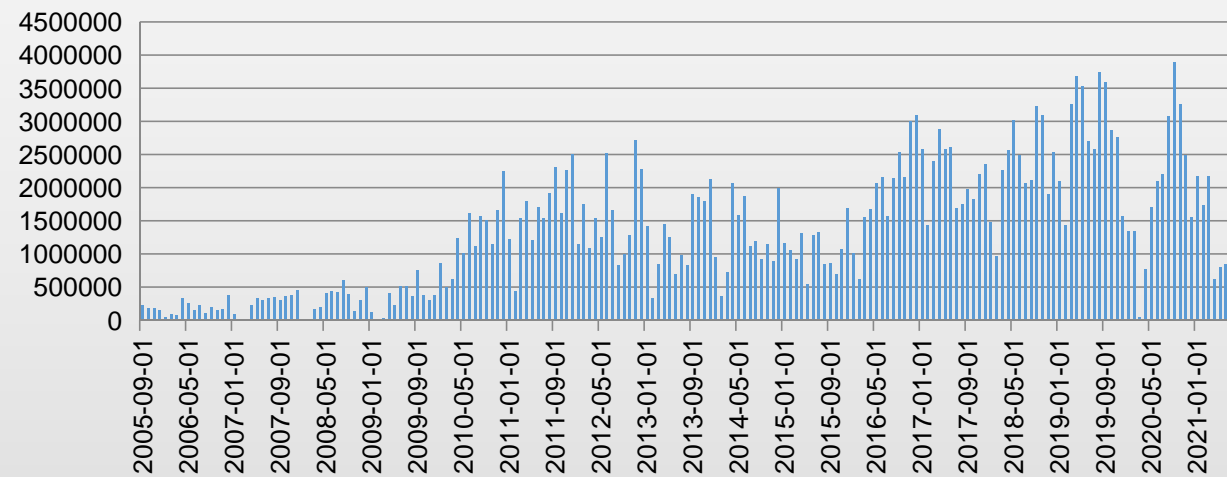
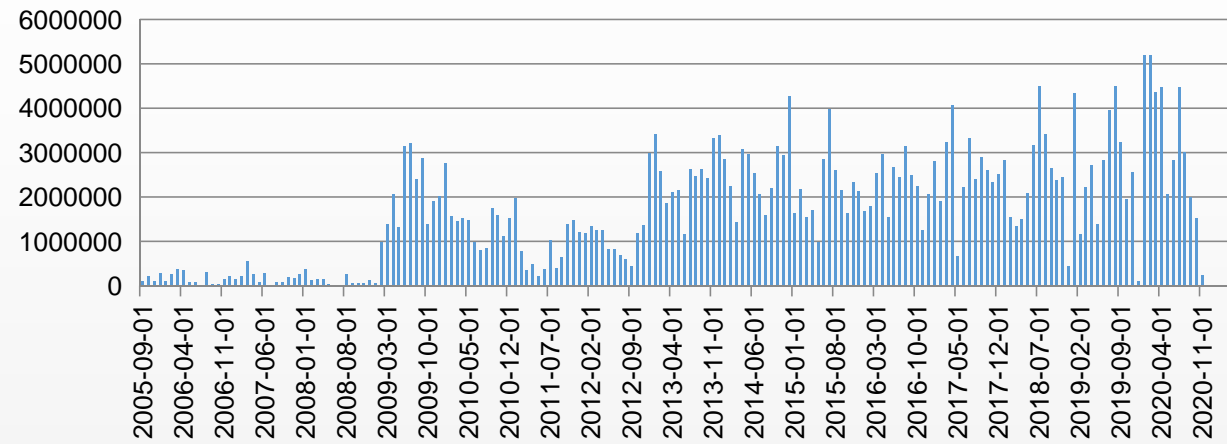
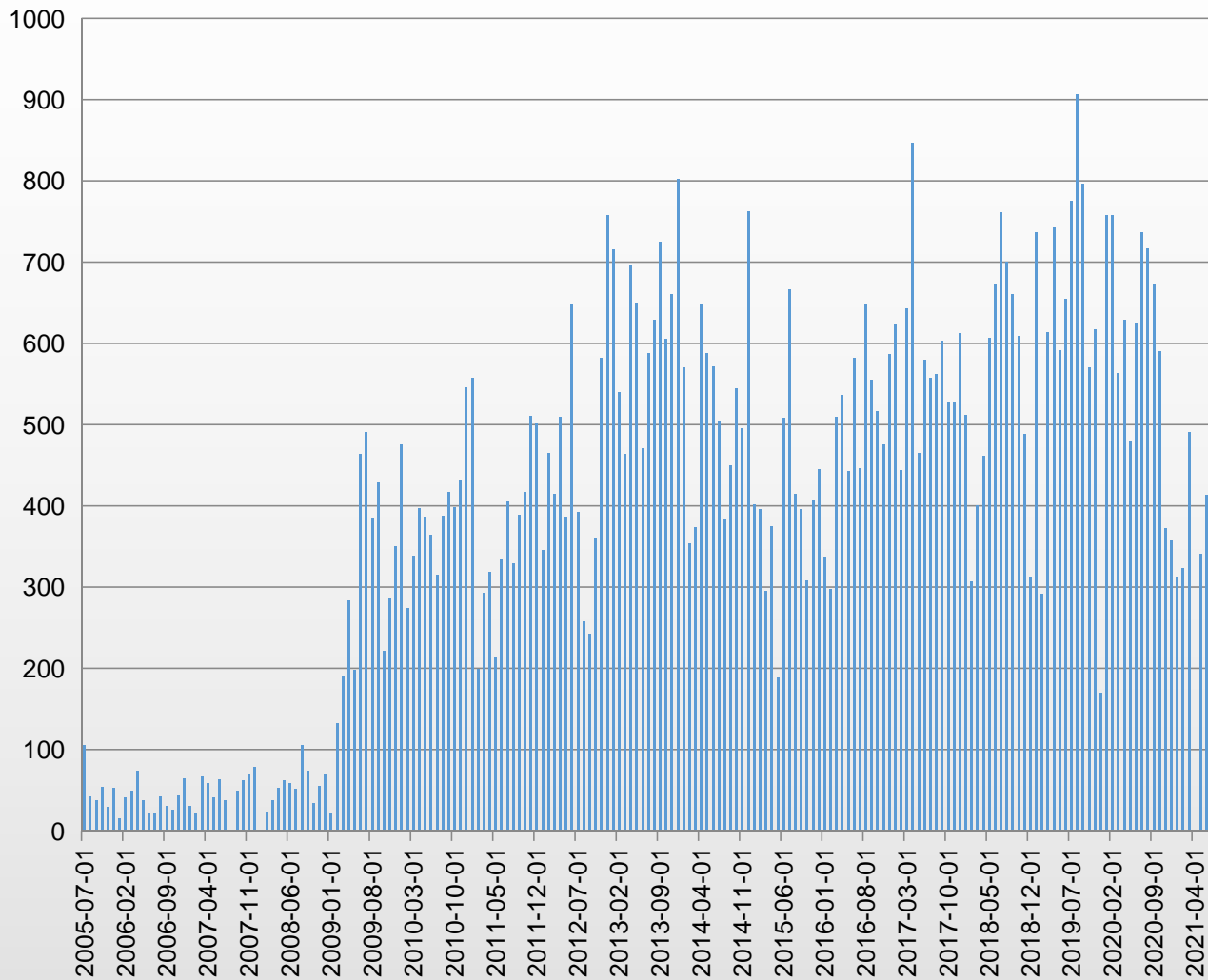


一、双

二、

三、卷



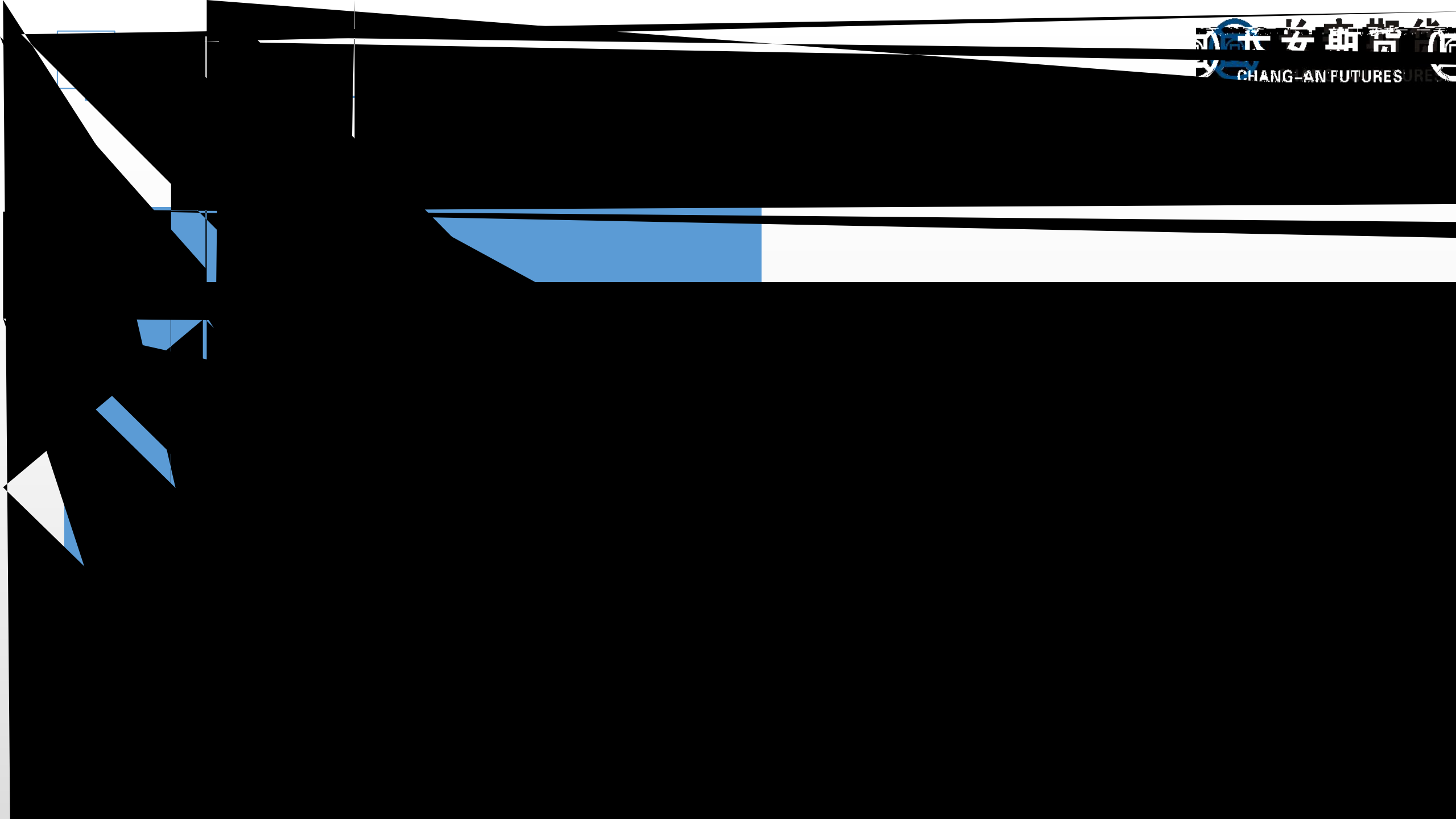


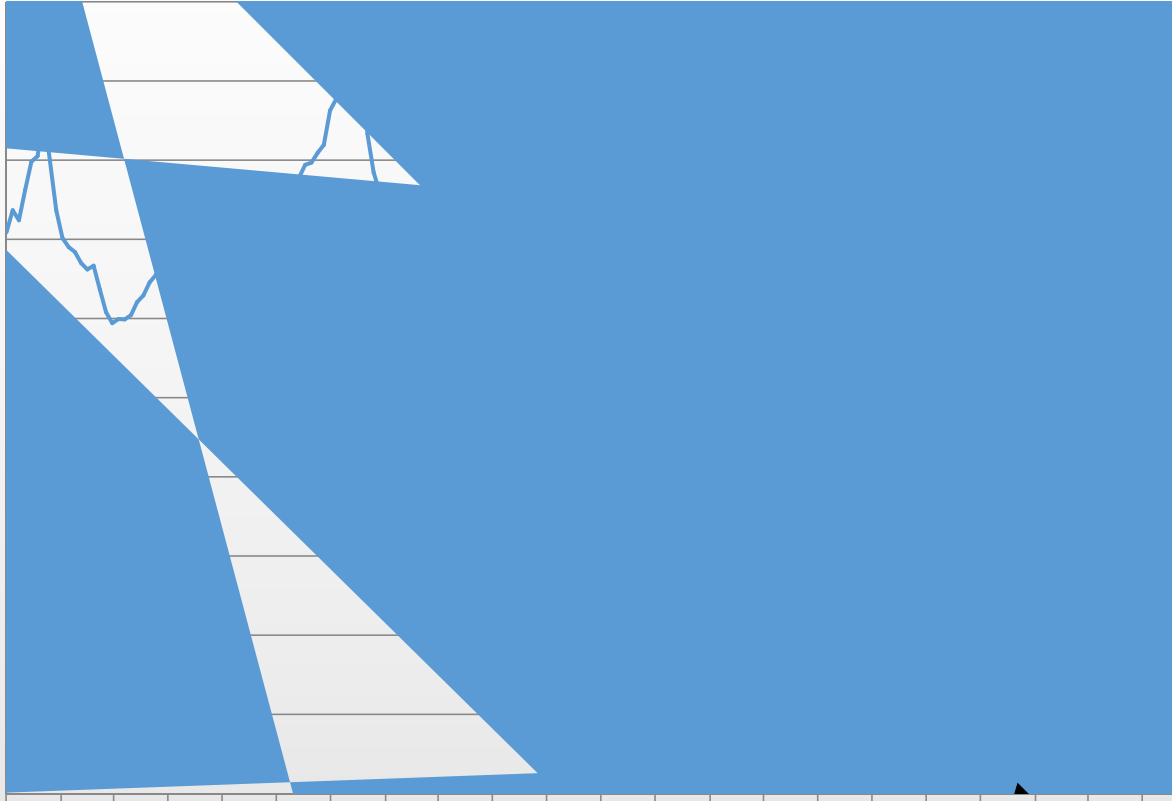














3













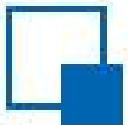






3





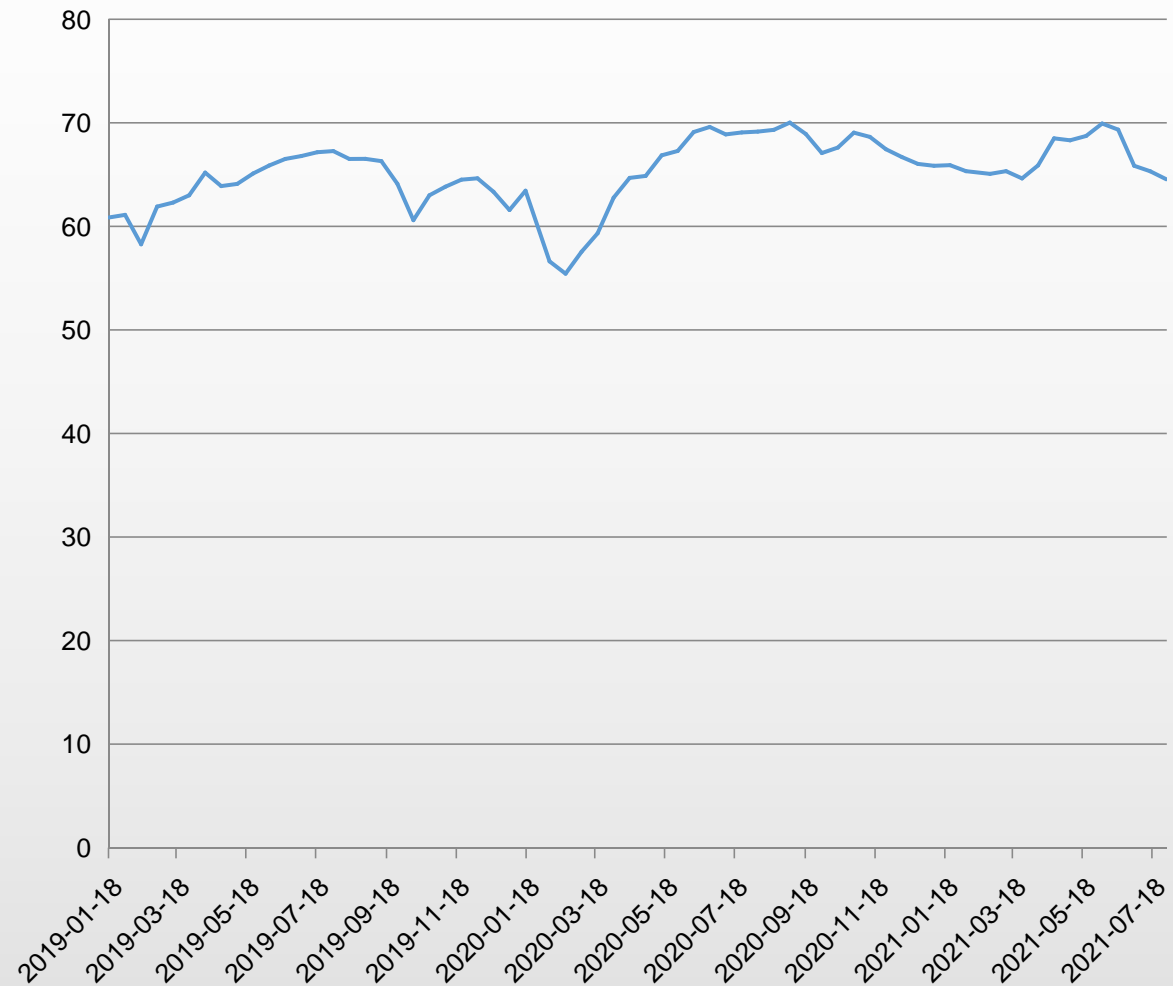
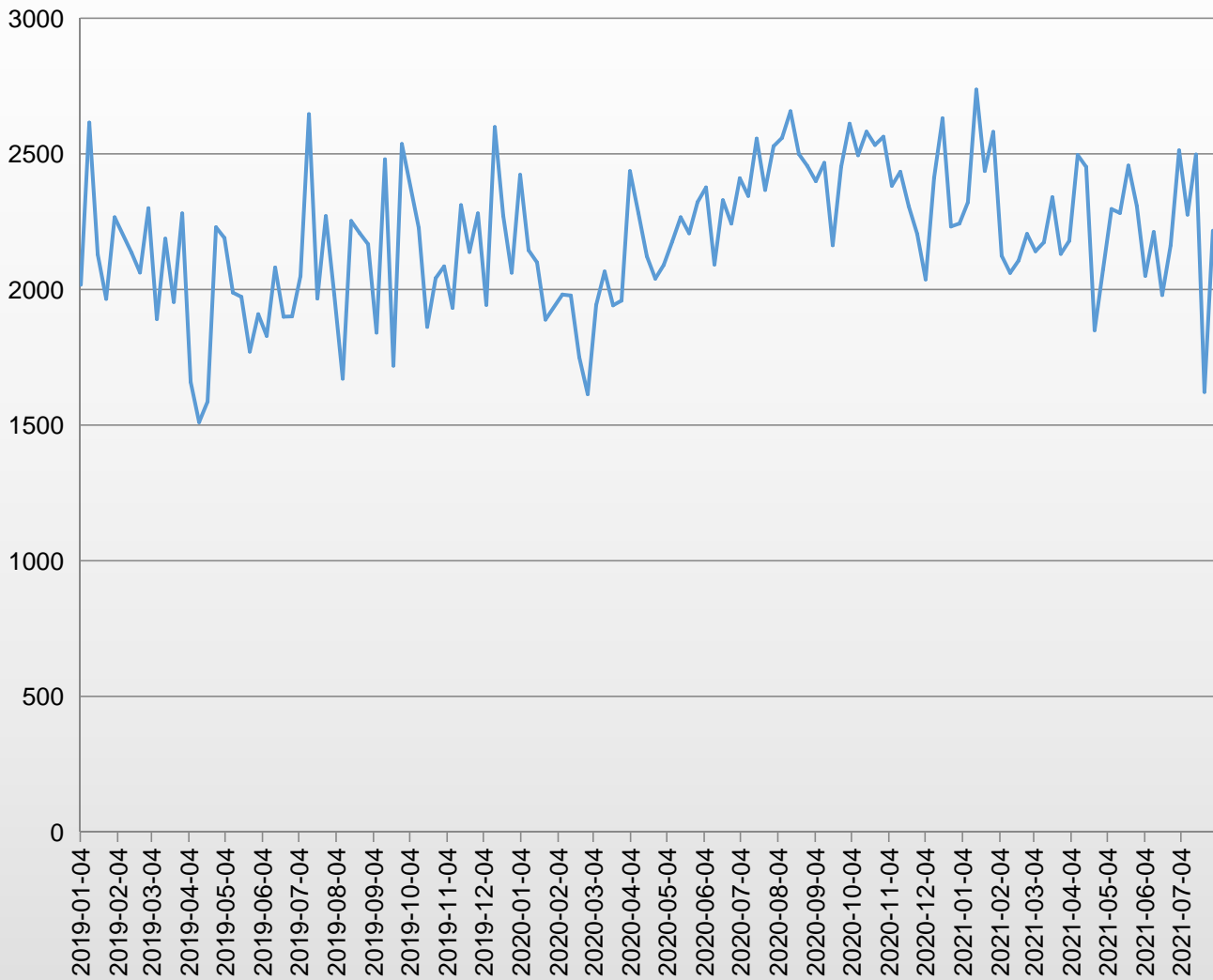
一、双

二、

三、 、 卷



| |
|--|
| |
| |
| |
| |
| |
| |
| |
| |
| |
| |
| |

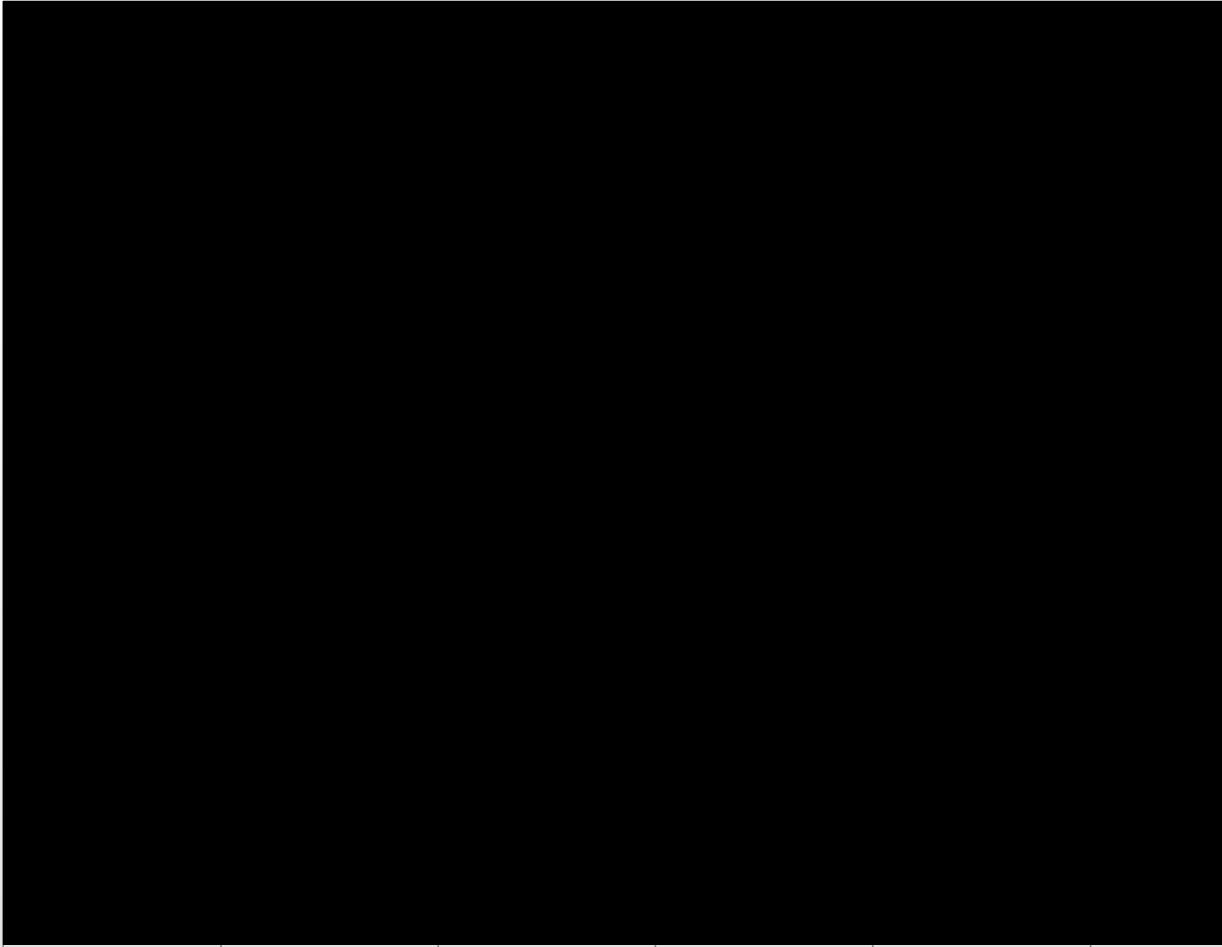


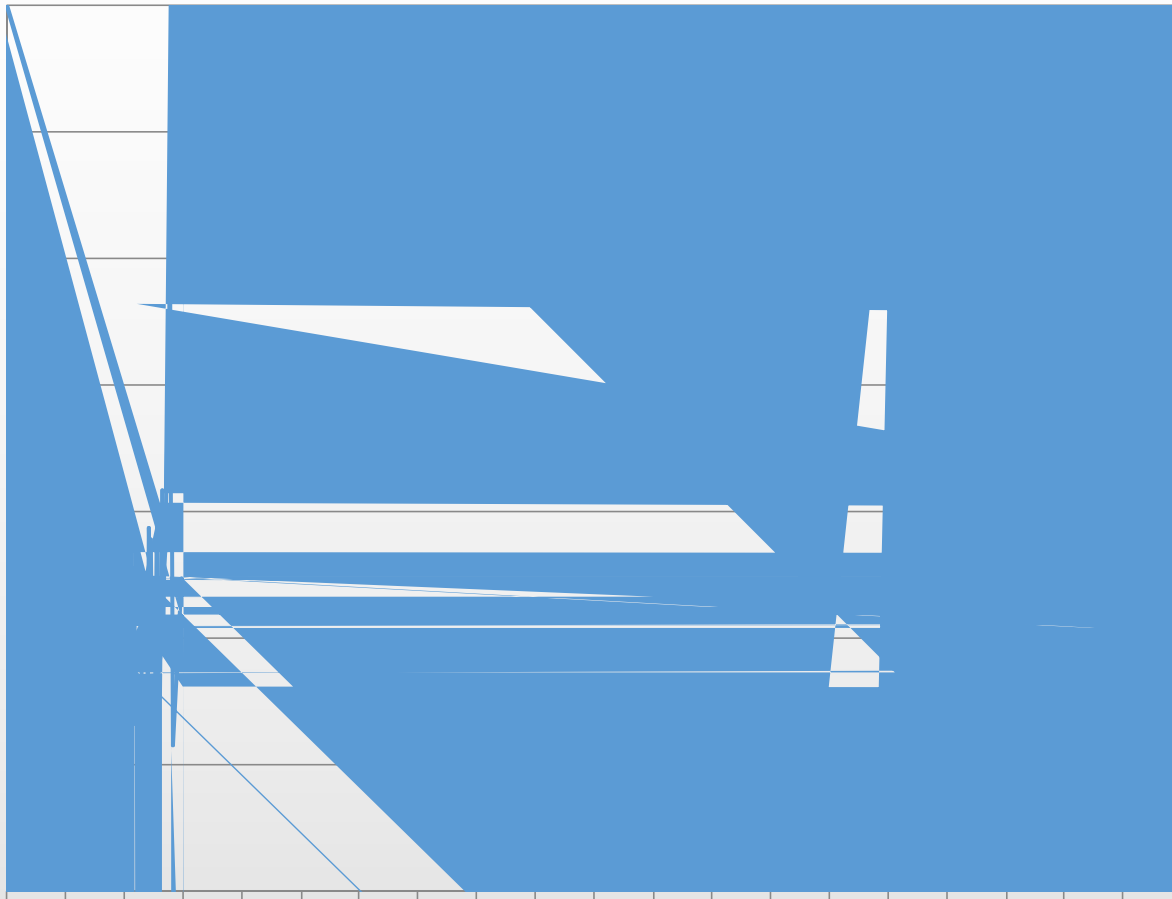


" Taper"

"

"







"

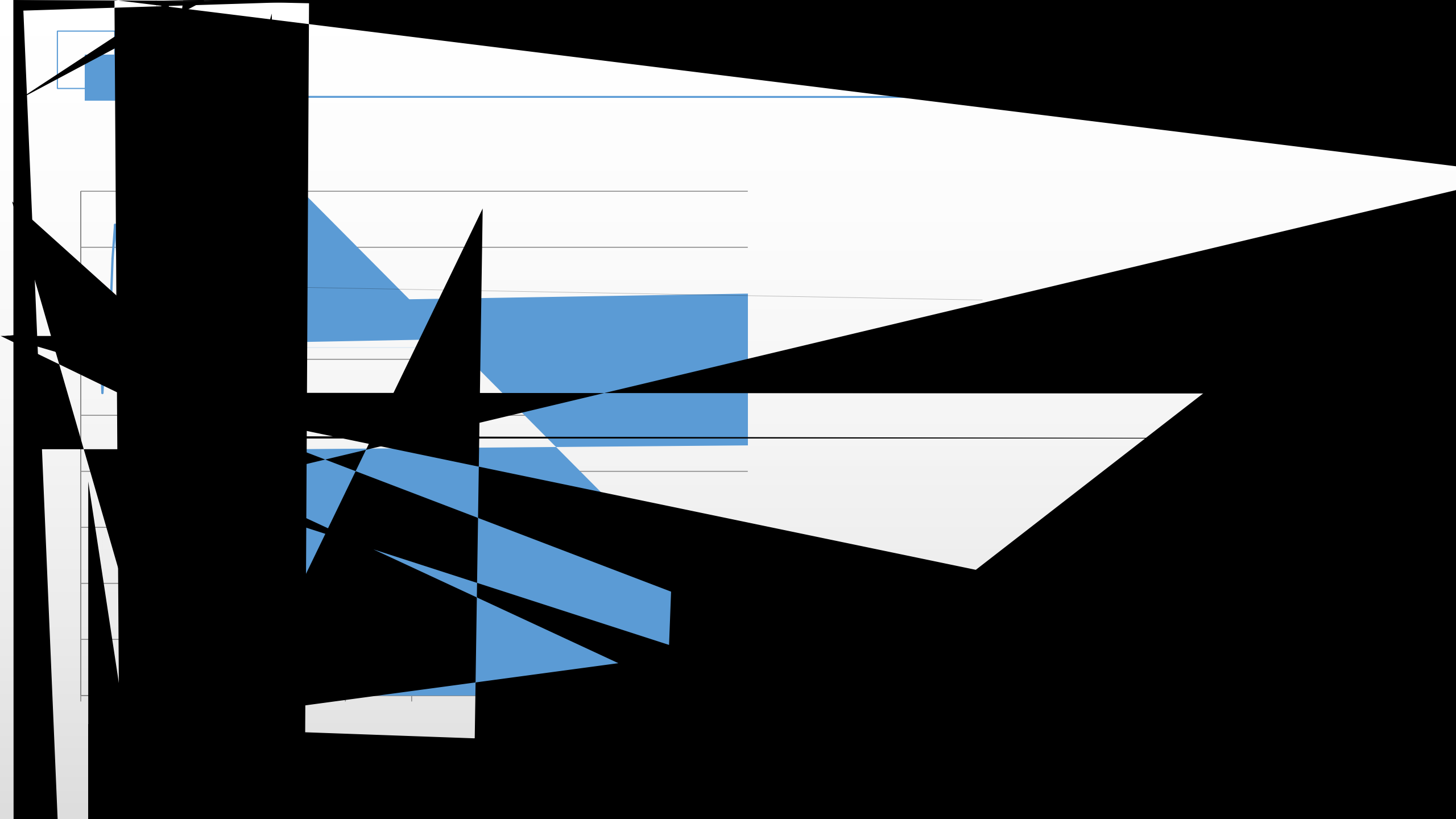
"

" 2+26"

"

"







45

247



“Taper”

”

”

19

45



“ ”

“ 2+26”

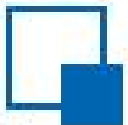
“ ”



247

45





一、双

二、



W N D







7 15 6 1 M2
0.5

CPI

PPI

5

9%



WND



7 30

2030

" "

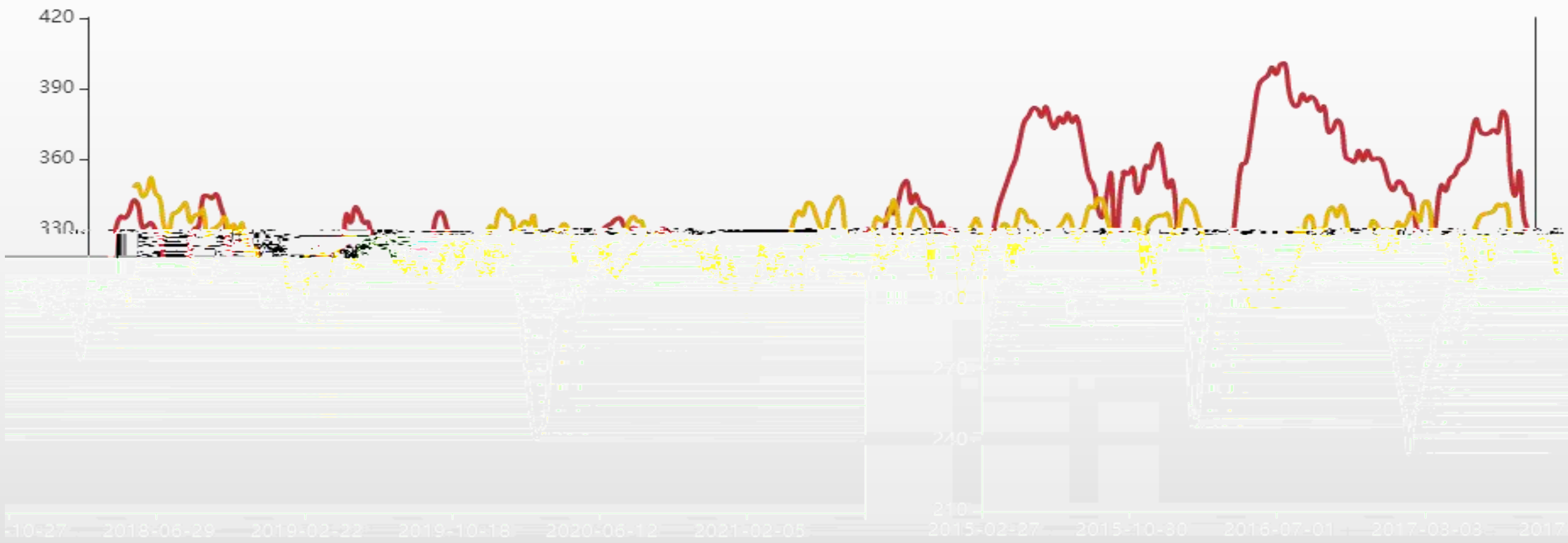
" " " "

" "

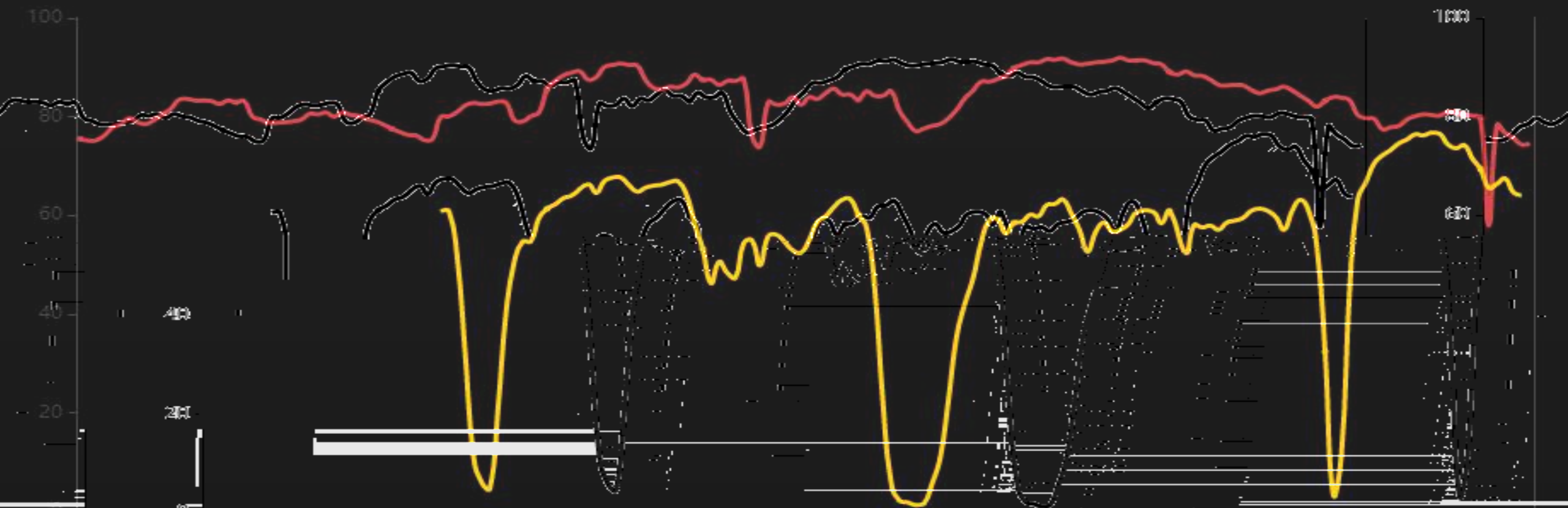
" "

" "

—●— 螺纹钢：建筑钢材钢铁企业：实际产量：中国（周）（L） —●— 热轧板卷：钢企：实际产量：中国（周）（L）

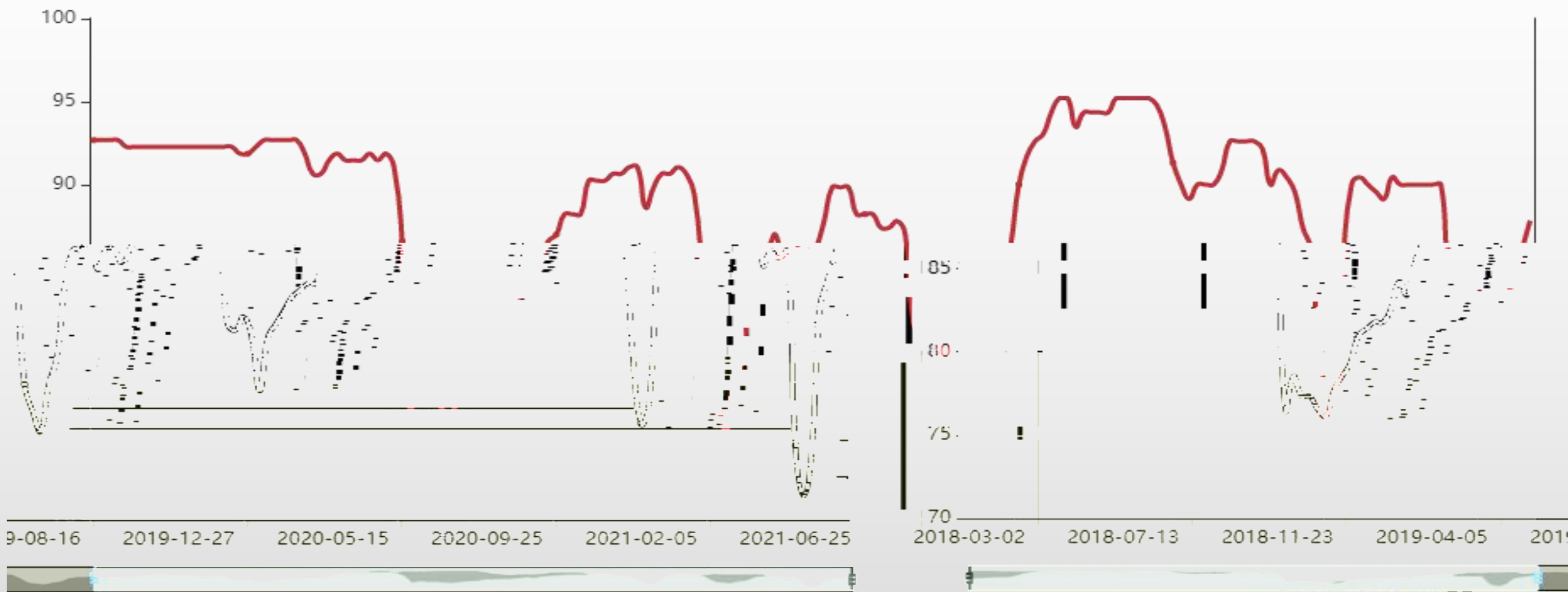


247家钢铁企业·高炉开工率·中国(周)(%) 71家独立电炉厂·高炉利用率·中国(周)(%)



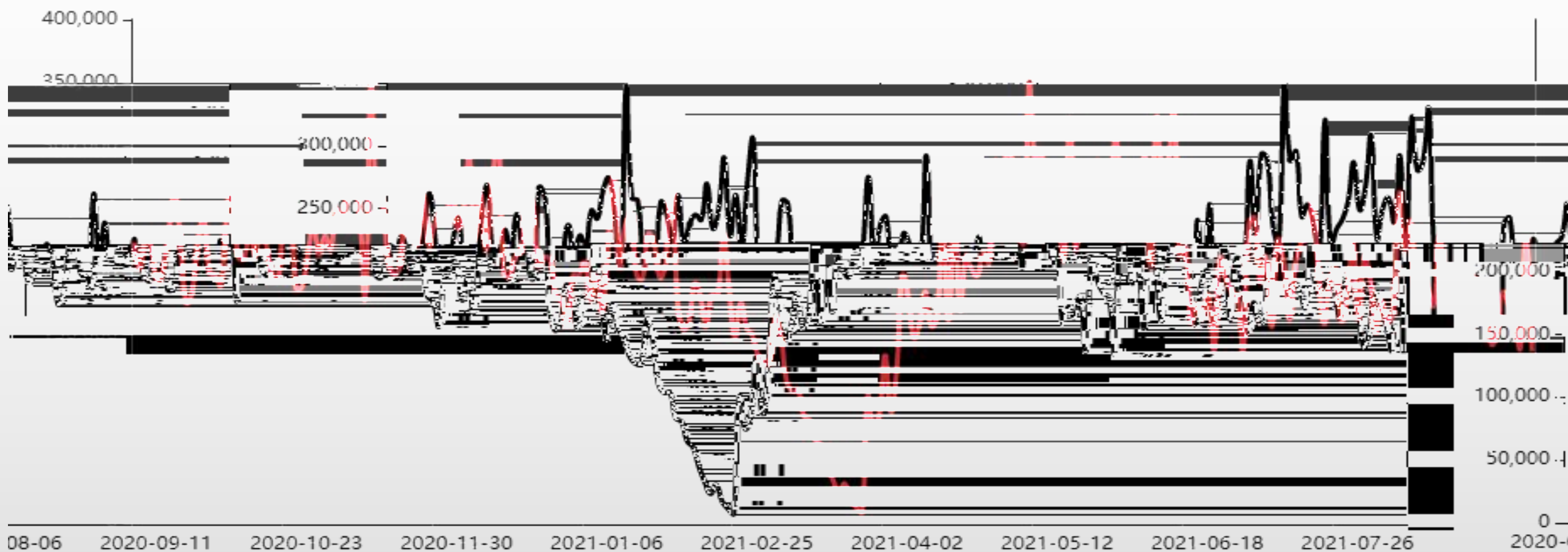


● 247家钢铁企业：盈利率：中国（周）（L）

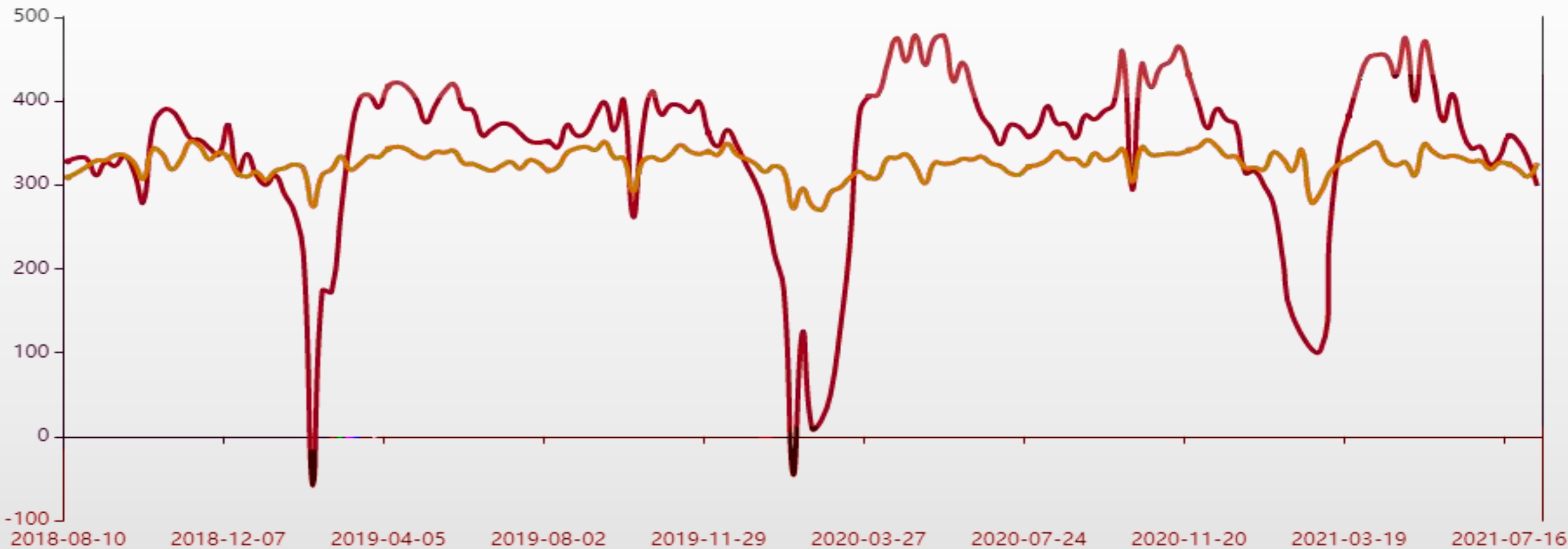


数据来源：钢联数据

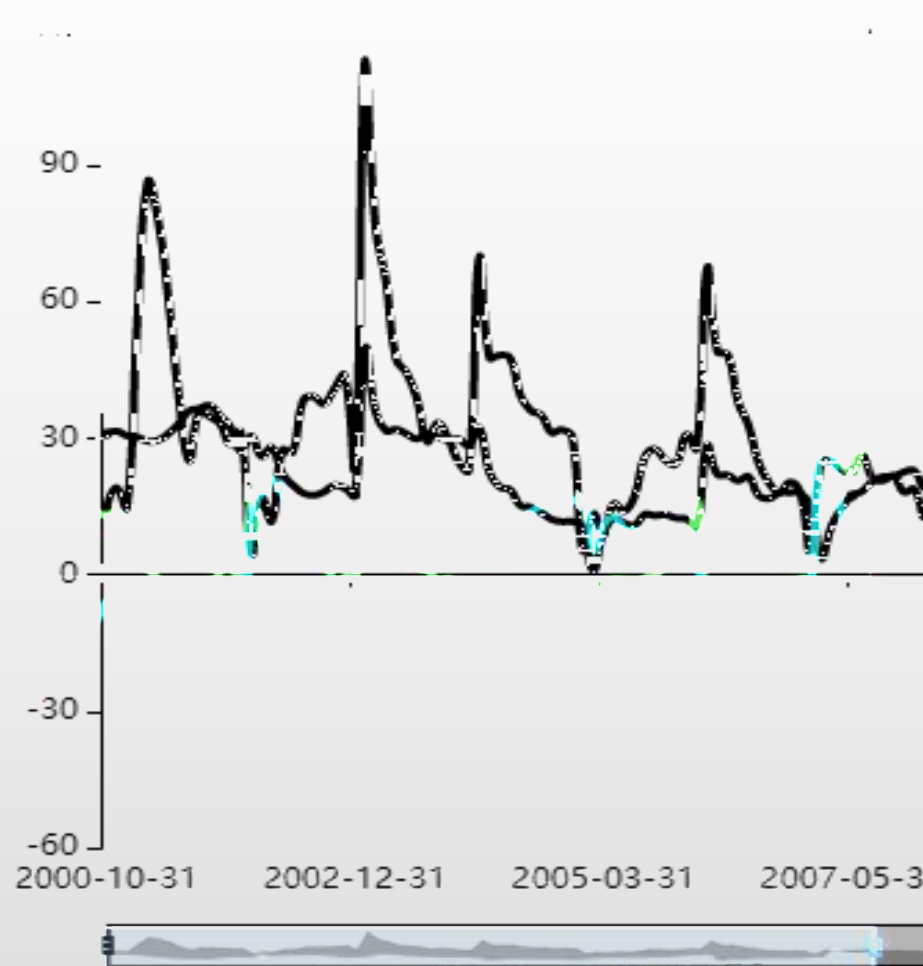
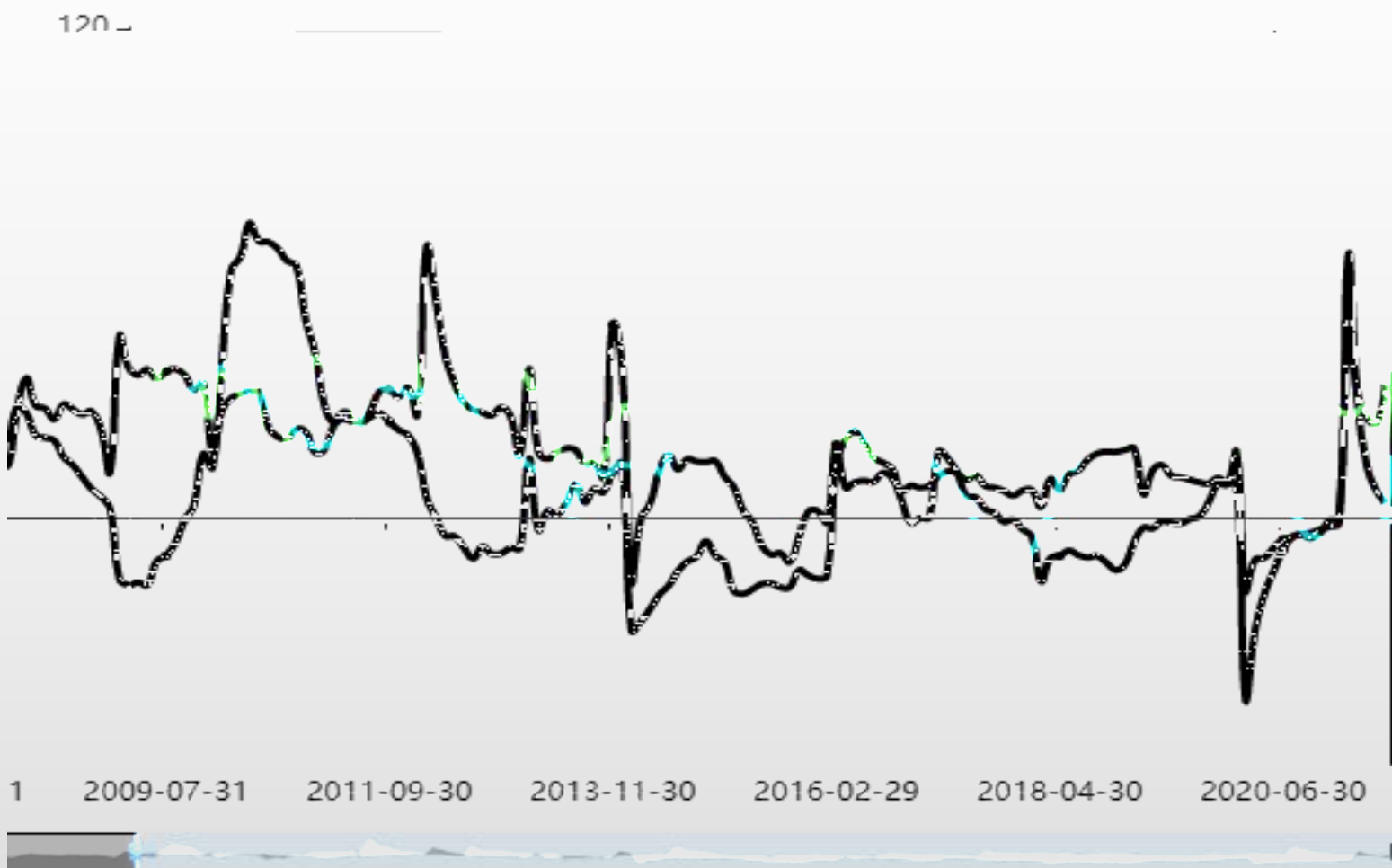
● 建筑用钢：成交量合计：中国：主流贸易商（日）(L)



● 螺纹钢：消费量：中国（周）（L） ● 热轧板卷：消费量：中国（周）（L）

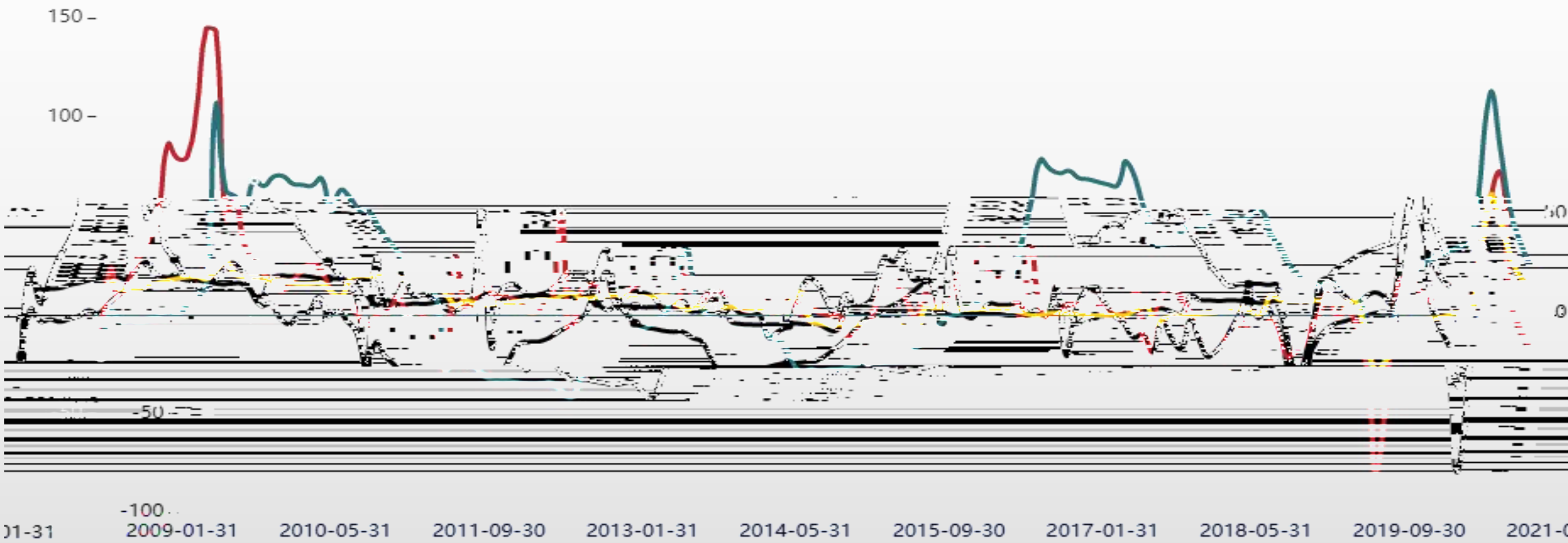


● 房地产开发企业：新增固定资产投资完成额累计同比：中国（月）(L) ● 房地产开发企业：房屋：新开工面积累计同比：中国（月）(L)

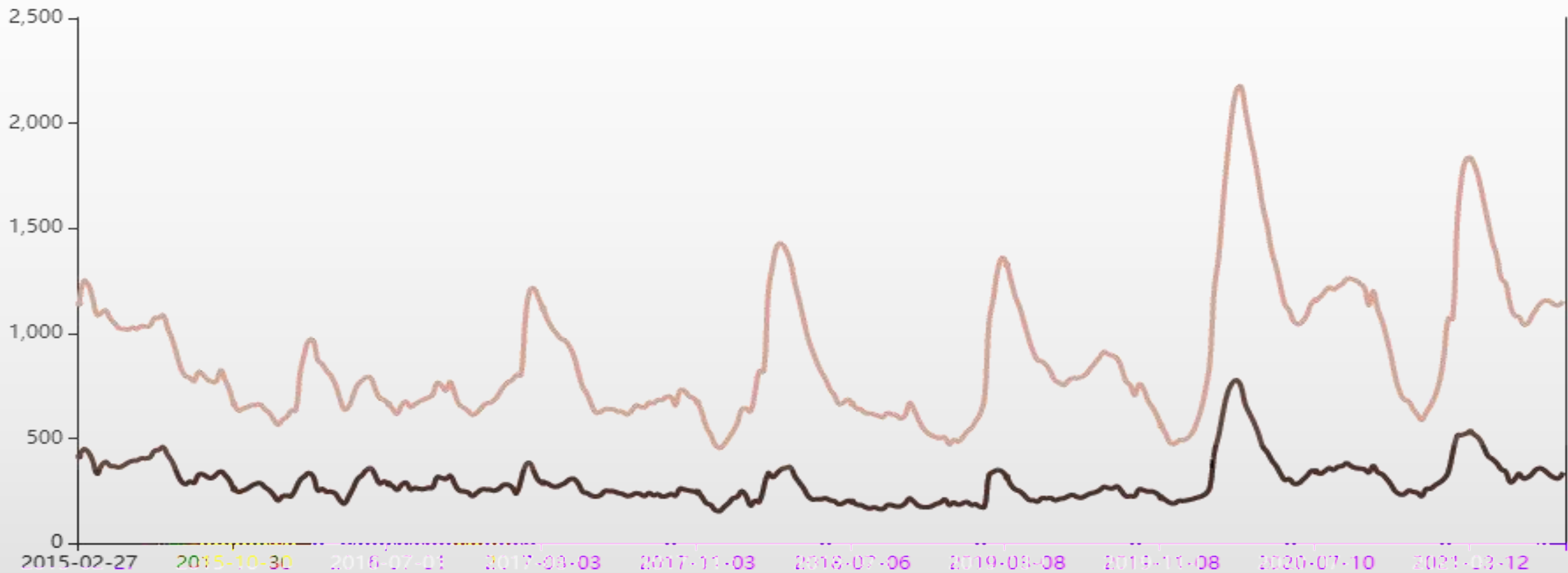


数据来源：钢联数据

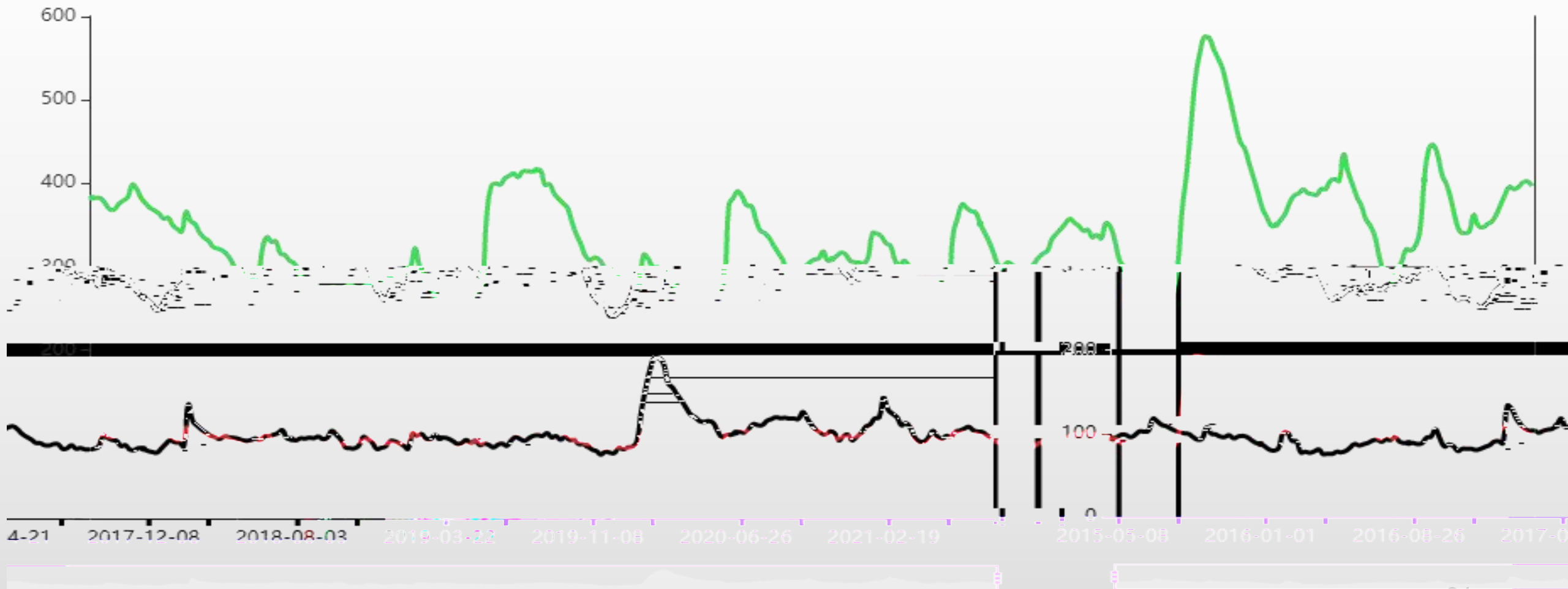
● 汽车：产量同比：中国（月）(L) ● 统计局：中国：工业产品：产量累计同比：挖掘机（月）(L) ● 统计局：水泥：产量累计同比：中国（月）(L)



● 建筑钢材钢铁企业：螺纹钢：厂内库存：中国（周）（L） ● 螺纹钢：35个城市：库存合计：中国（周）（L）



● 钢企：热轧板卷：厂内库存：中国（周）(L) ● 热卷库存总计(L)



数据来源：钢铁数据





“

”

