



## 生猪日报

供应压力缓解VS消费有待回暖，

猪价上行空间有限

长安期货 投资咨询部

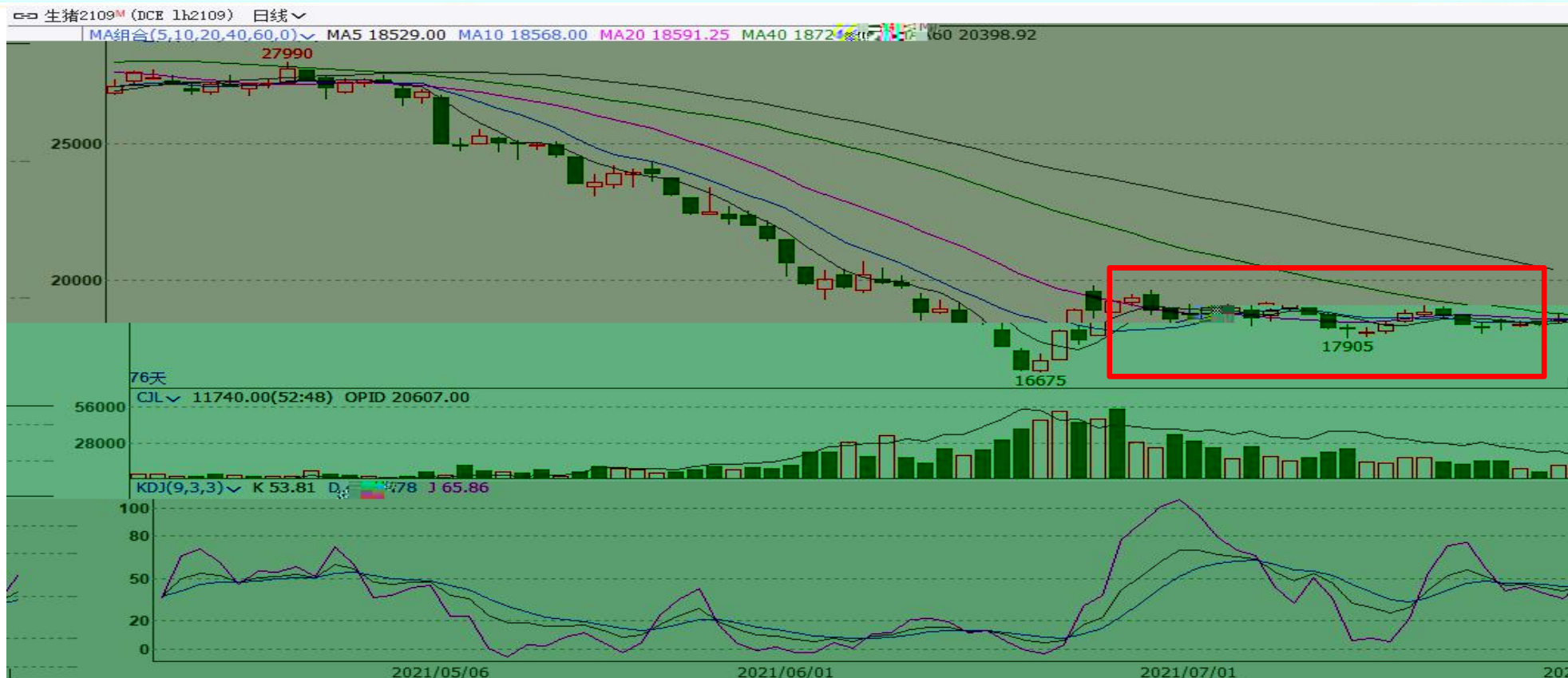
2021. 8. 1



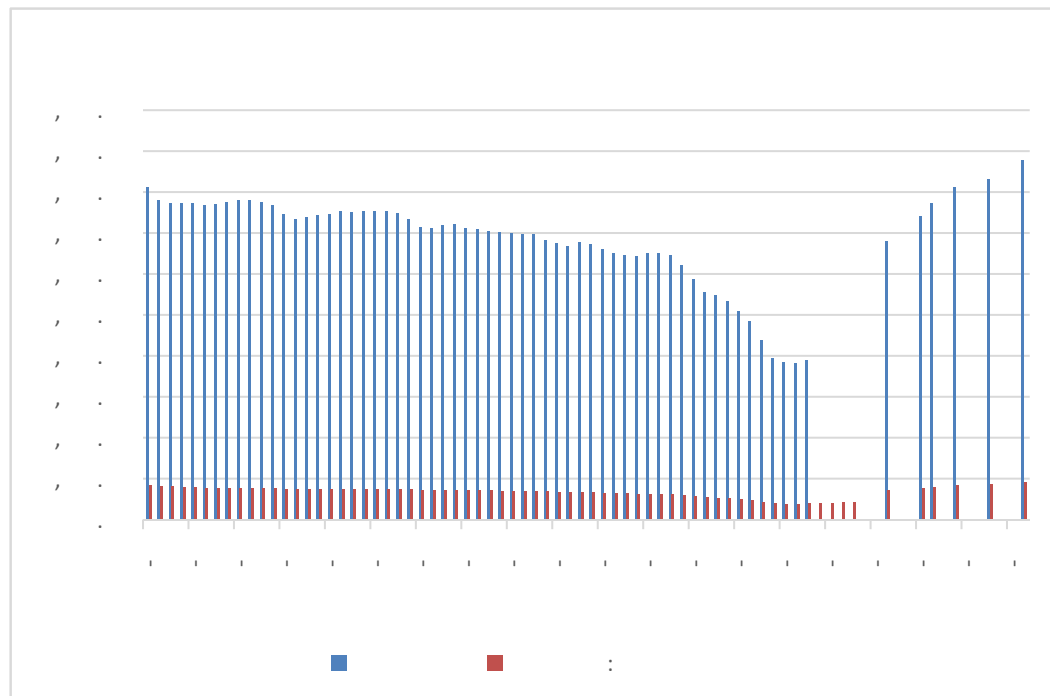
15.44 /

0.90 /

6.21%



	7			7 30	LH2109
18765 /		3.12%		23.1	36.9
20607					11976



WIND

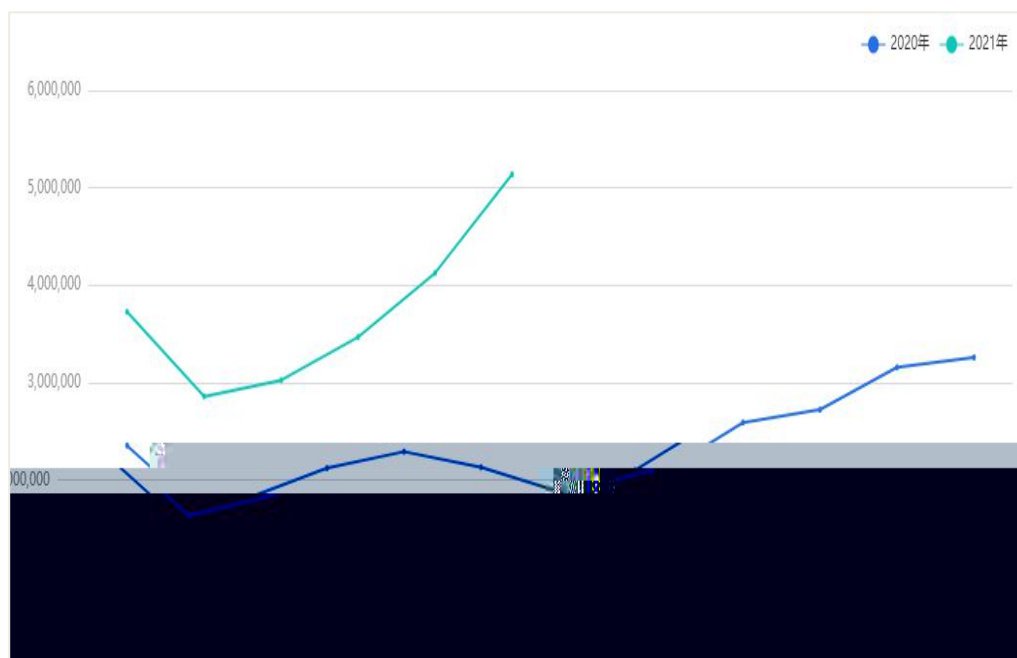
2021

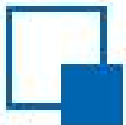
802	23.0%	4291
715		
43911	9915	29.2%
5.6%	4564	
934	25.7%	5.7%



( )

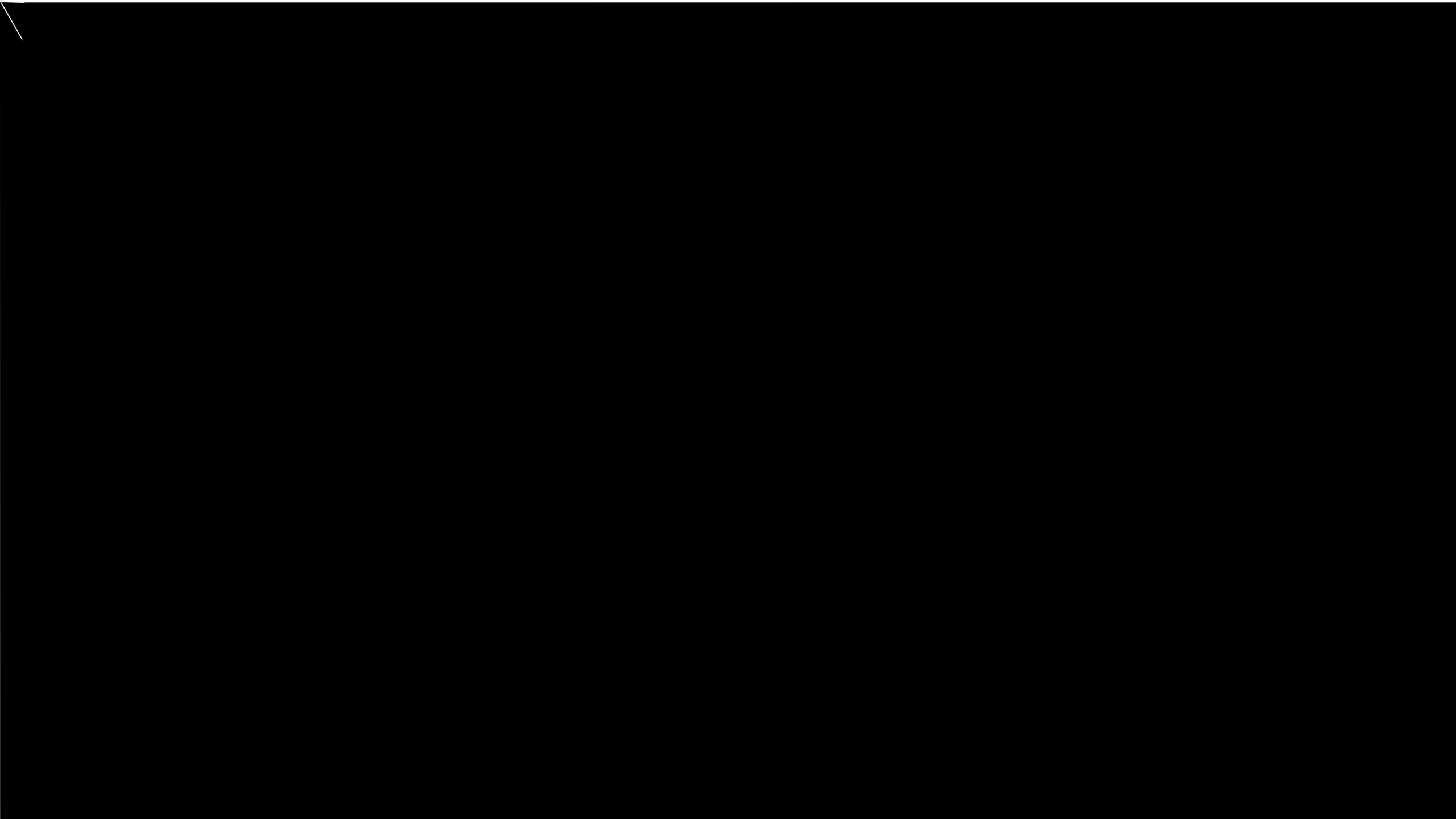
( )



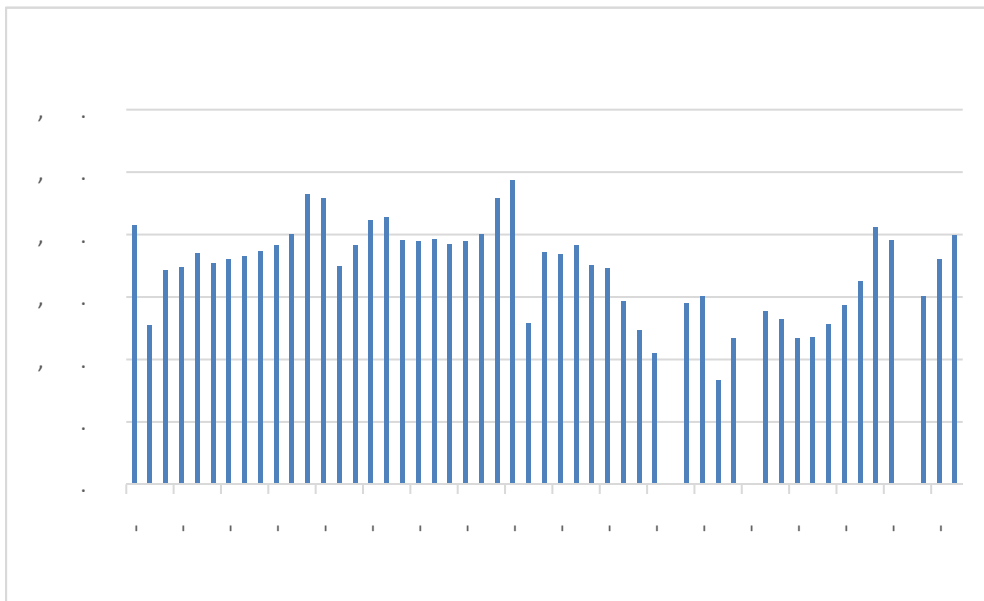


长安期货  
CHANG-AN FUTURES









wind

7

24.25%

2.08

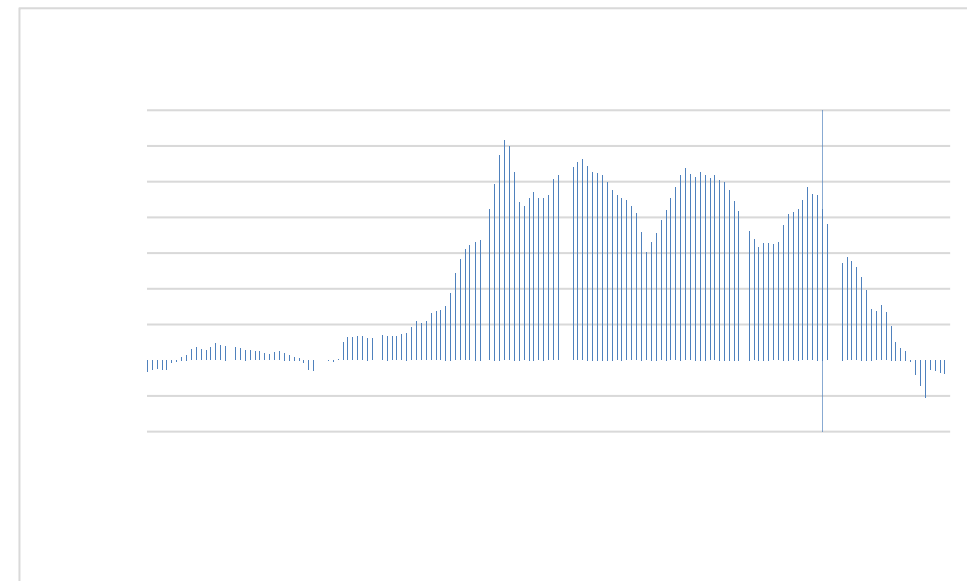
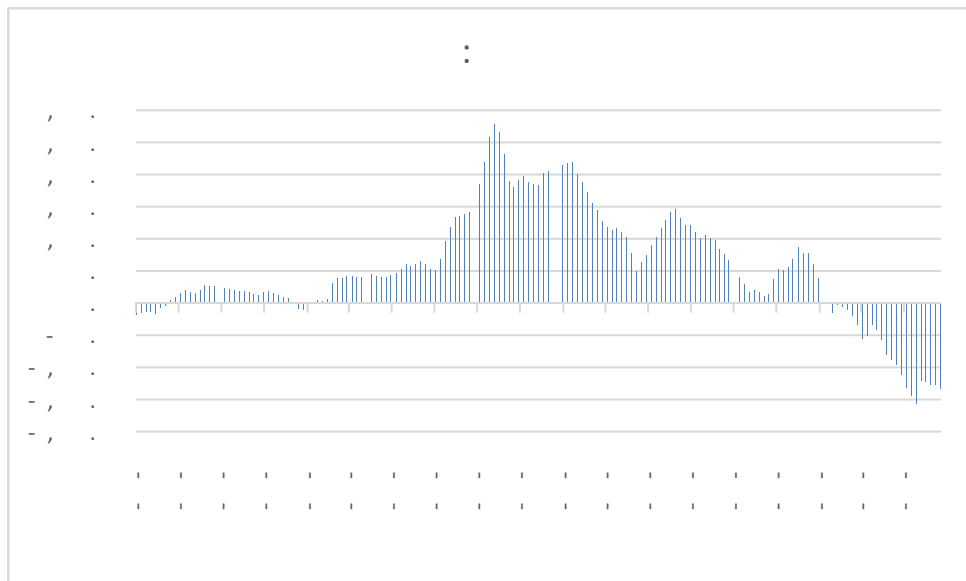


7



8

8



2021 7 14

2.98 /

0.3%

0.3%

16.5%

570.17

30.1%

7 3

3.74 /



## 猪肉储备预警调节机制

		预警分级		储备调节
过度下跌	三级预警	猪粮比价低于6:1		暂不启动临时储备收储
	二级预警	猪粮比价连续3周处于5:1-6:1, 或能繁母猪存栏量单月同比降幅达到5%, 或能繁母猪存栏量连续3个月累计降幅在5%-10%时		视情启动
	一级预警	当猪粮比价低于5:1, 或能繁母猪存栏量单月同比降幅达到10%, 或能繁母猪存栏量连续3个月累计降幅超过10%时。		启动收储
过度上涨	三级预警	当猪粮比价高于9:1时,		暂不启动储备投放
	二级预警	当猪粮比价连续2周处于10:1-12:1, 或36个大中城市精瘦肉零售价格当周平均价同比涨幅在30%以上时		启动储备投放
	一级预警	当猪粮比价高于12:1, 或36个大中城市精瘦肉零售价格当周平均价同比涨幅超过40%时		加大投放



( )

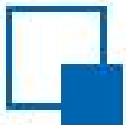
( )

( )



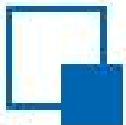
( )





长安期货  
CHANG-AN FUTURES

---



长安期货  
CHANG-AN FUTURES

---

“

”



长安期货  
CHANG-AN FUTURES

