

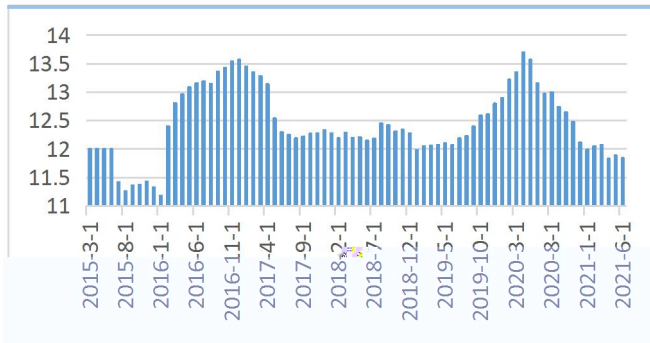


魏佩

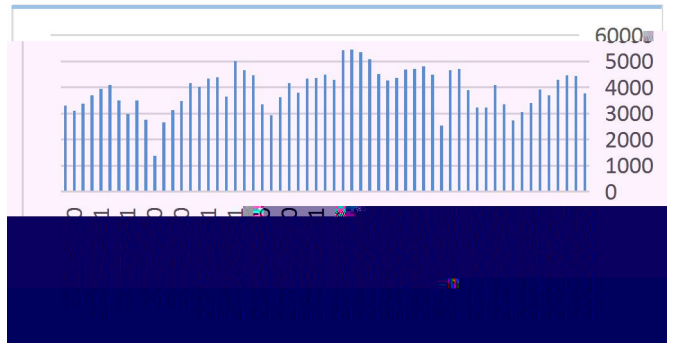




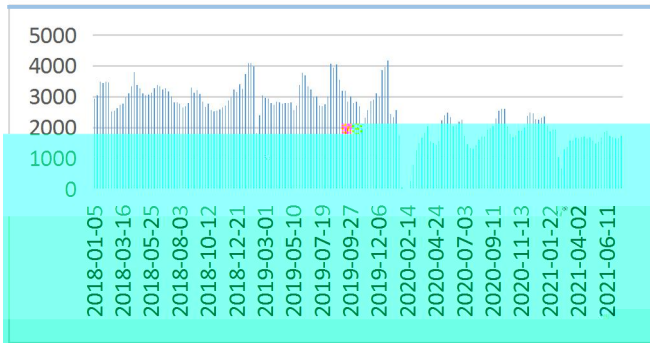
图：中国在产蛋鸡月度存栏数据 单位：亿只



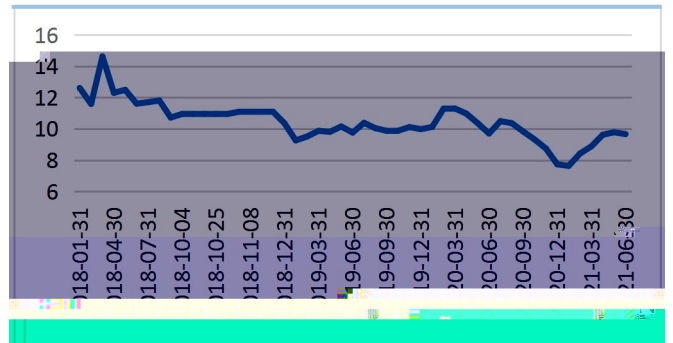
图：鸡苗销量 单位：万羽



图：全国主产区蛋鸡淘汰鸡出栏量 单位：万只

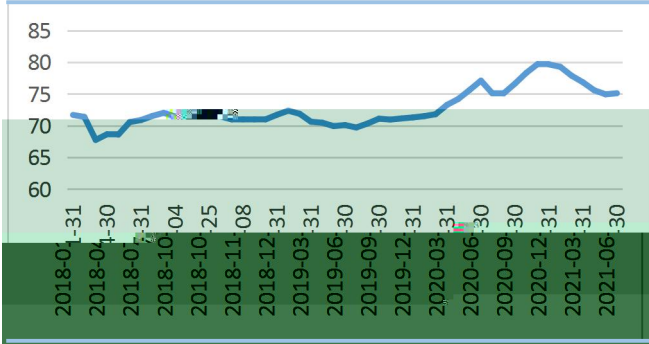


图：450日龄以上待淘蛋鸡月度存栏占比 单位：%



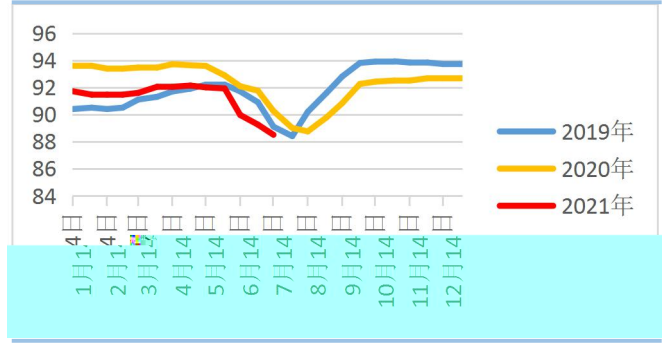
图：120-450 日龄蛋鸡月度存栏占比

单位：%



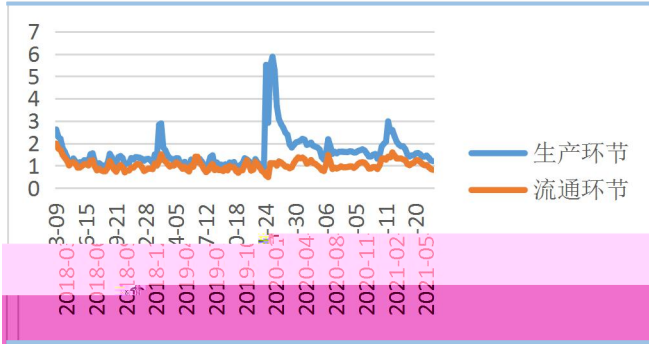
图：中国蛋鸡半月度产蛋率

单位：%



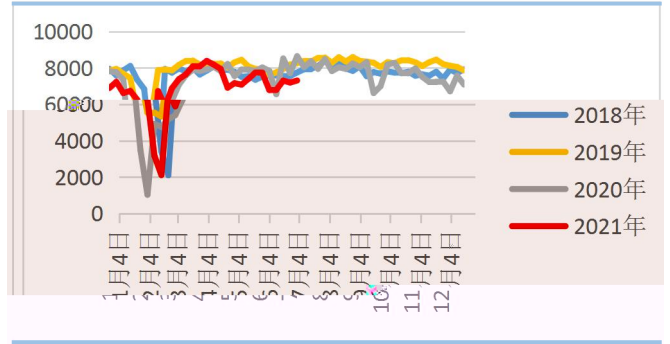
图：鲜鸡蛋库存天数

单位：天

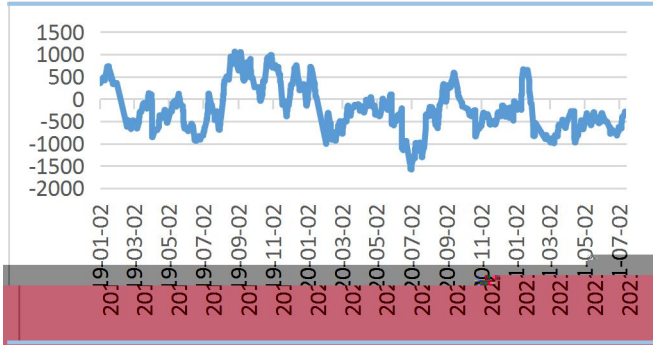


图：销区鸡蛋周度销量

单位：吨



图：鸡蛋基差（现货-09 期货） 单位：元/500 千克



图：淘汰鸡价格 单位：元/公斤

