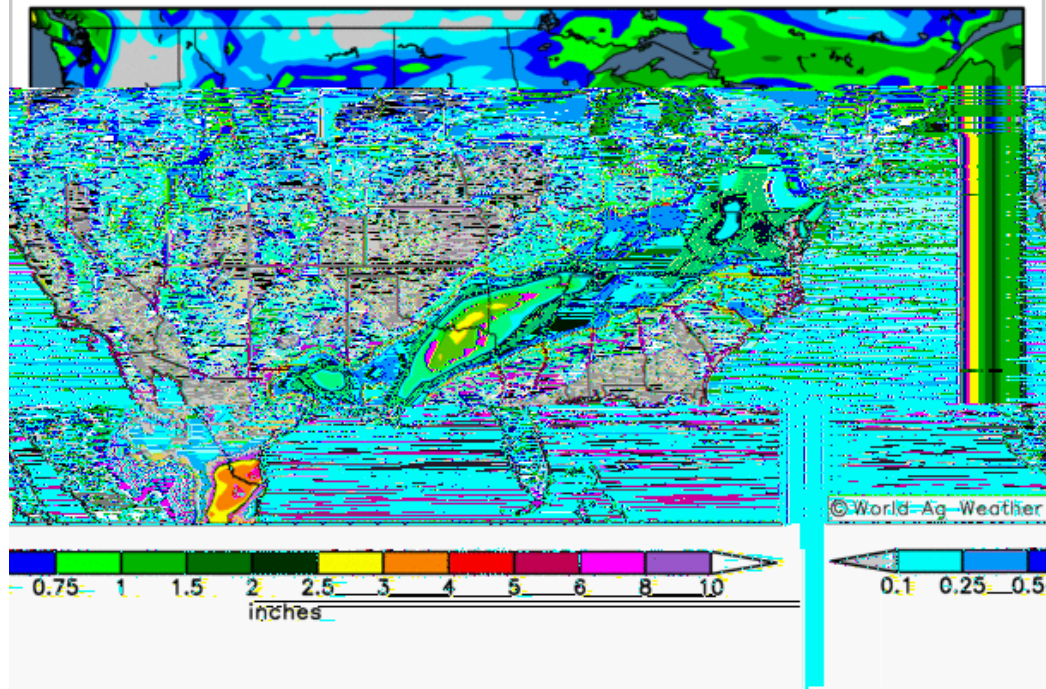




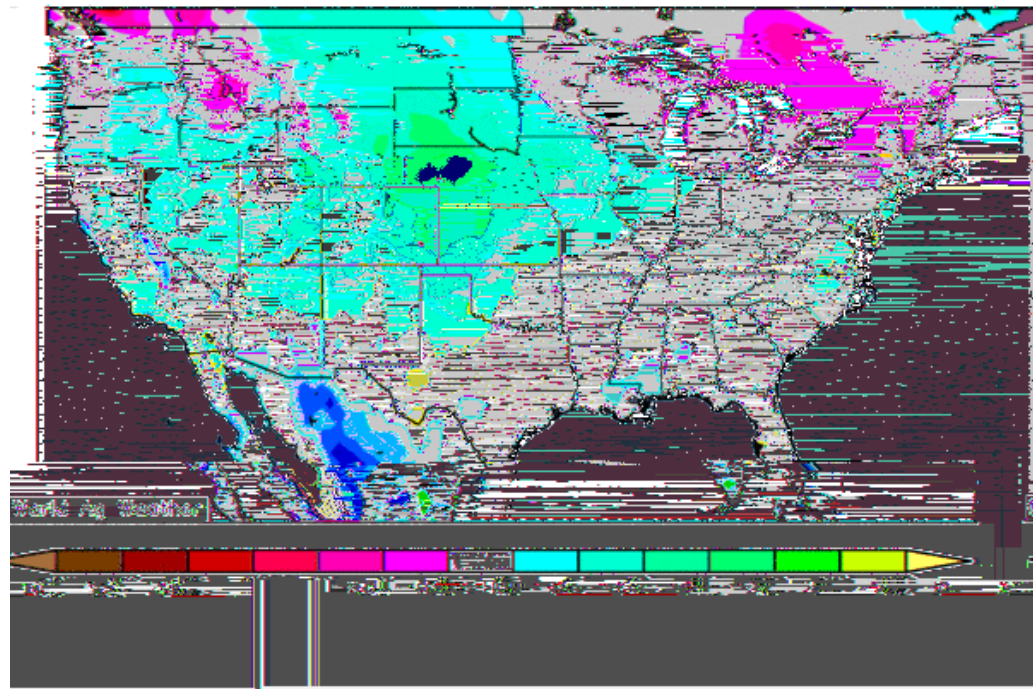
GFS High-Resolution Precipitation Forecast
Days 1-7: 00UTC 26 Apr 2021 - 00UTC 3 May 2021

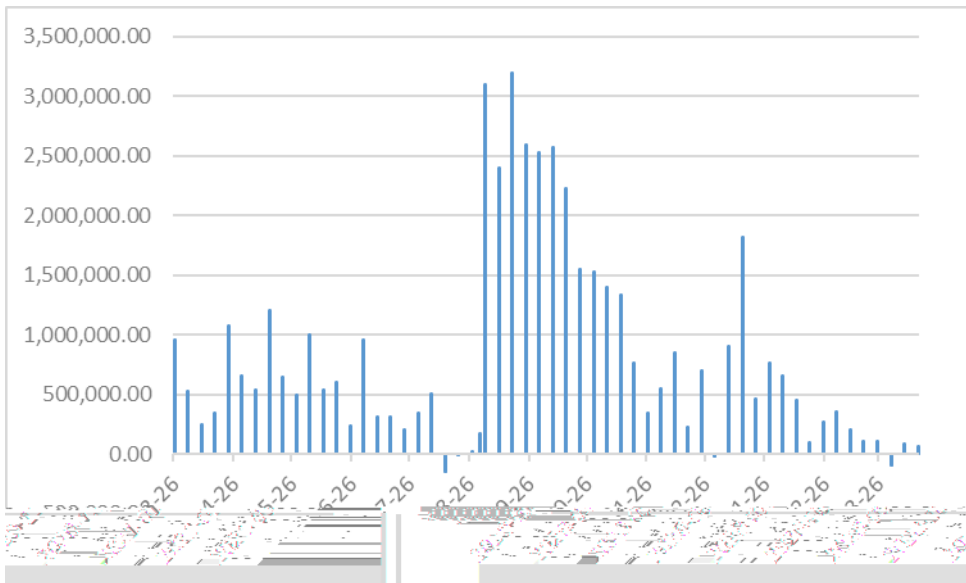
Model Initialized 00UTC 25 Apr 2021



GEFS Ensemble Mean Temperature Anomaly (°F)
Days 1-7: 00UTC 26 Apr 2021 - 00UTC 3 May 2021

Model Initialized 00UTC 25 Apr 2021





➤ USDA

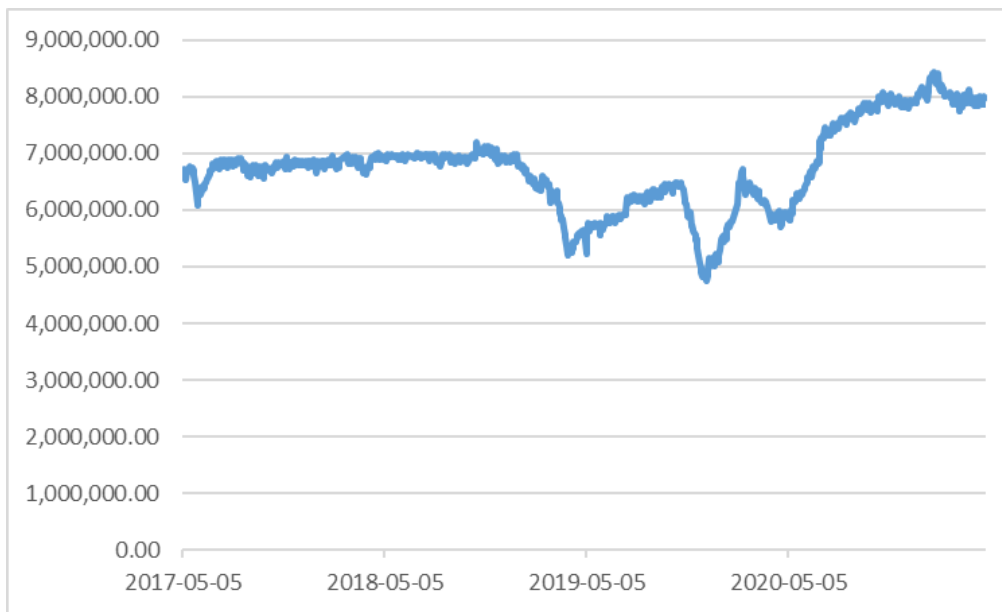
➤

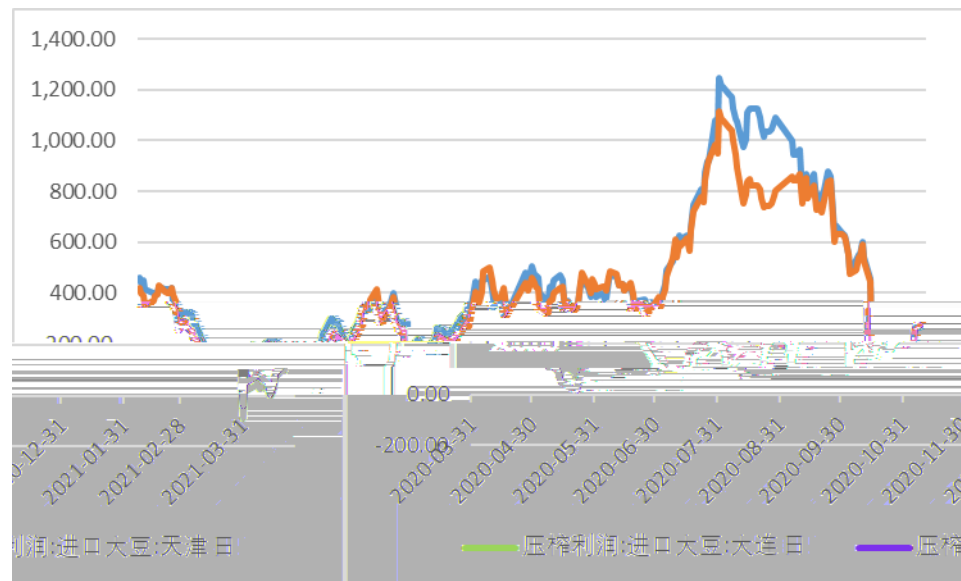
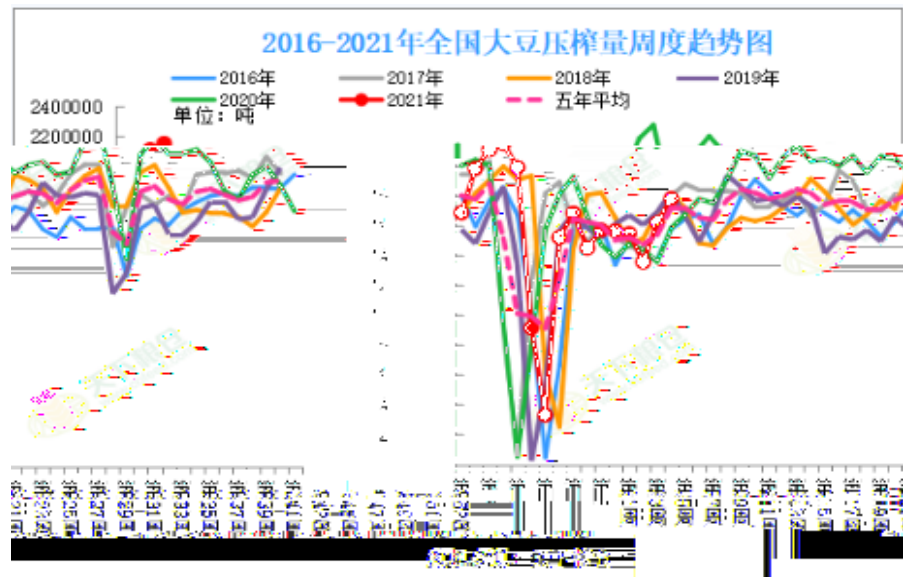


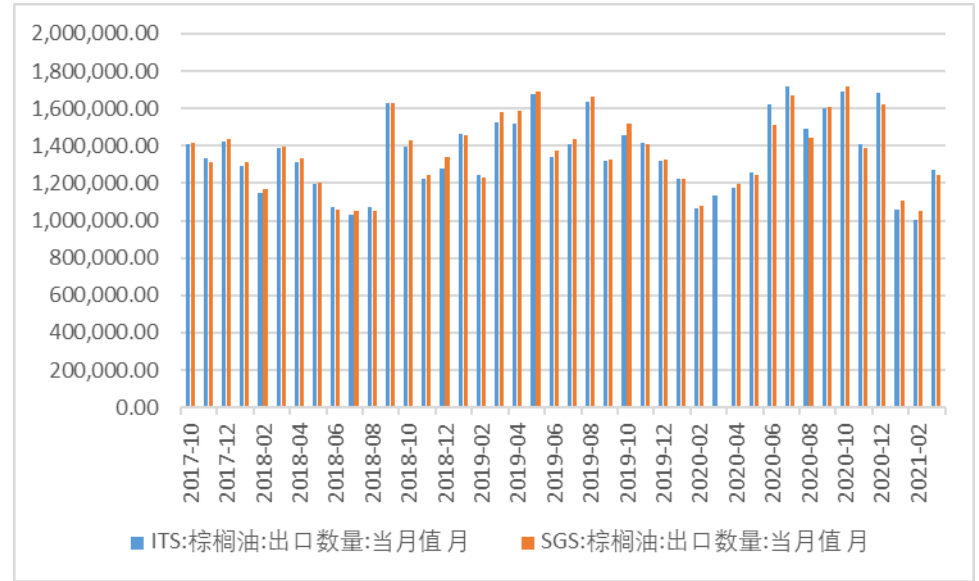
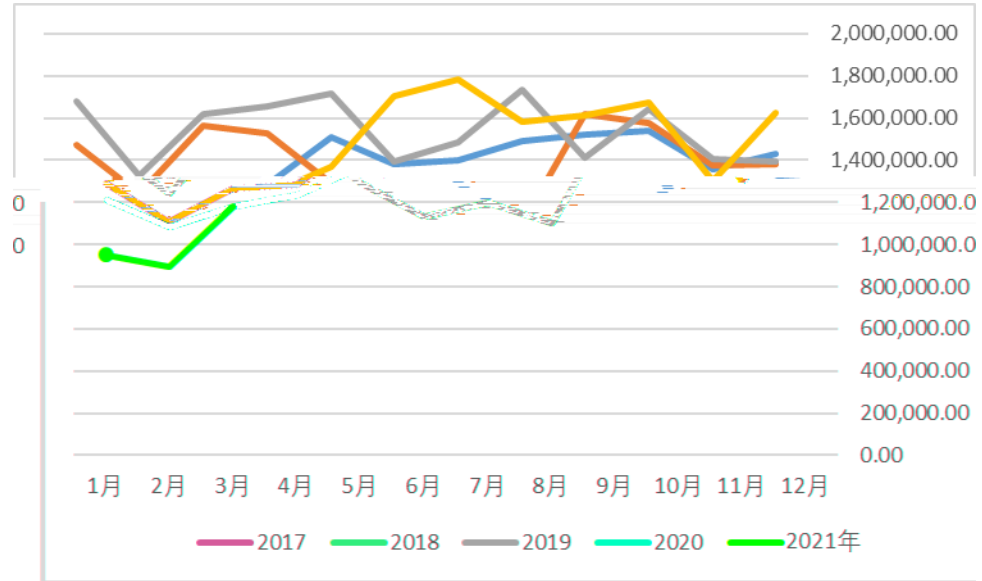


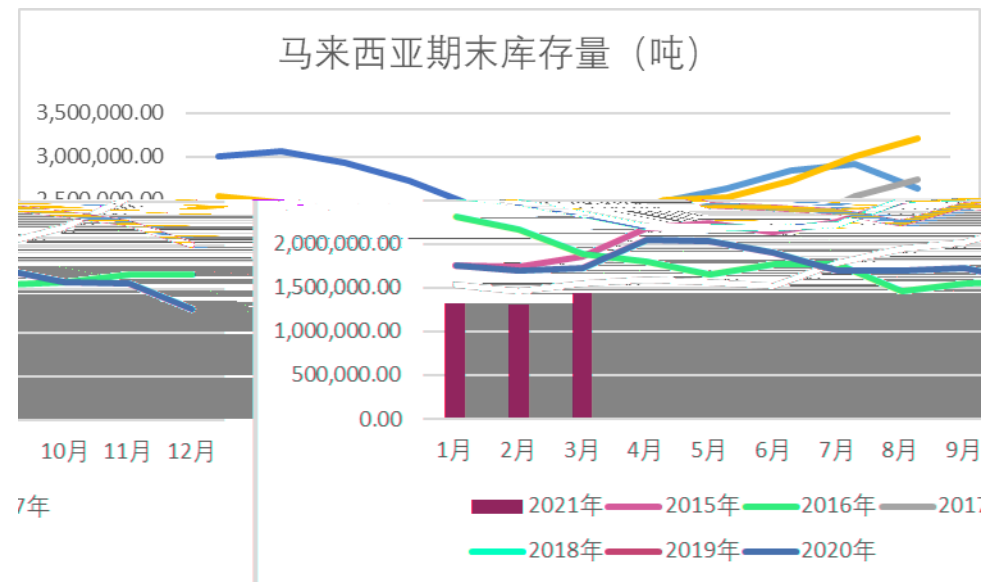
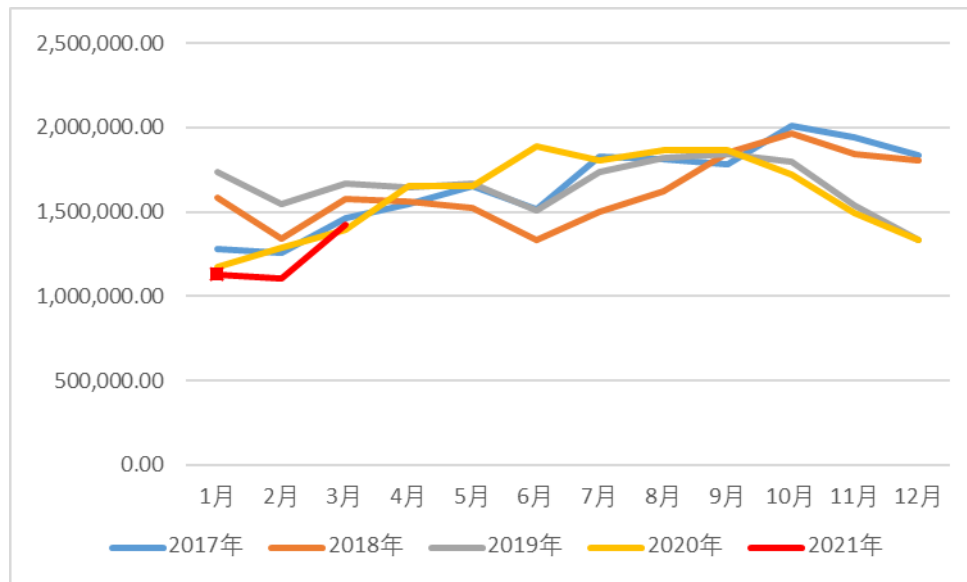
长安期货

CHANG'AN FUTURES

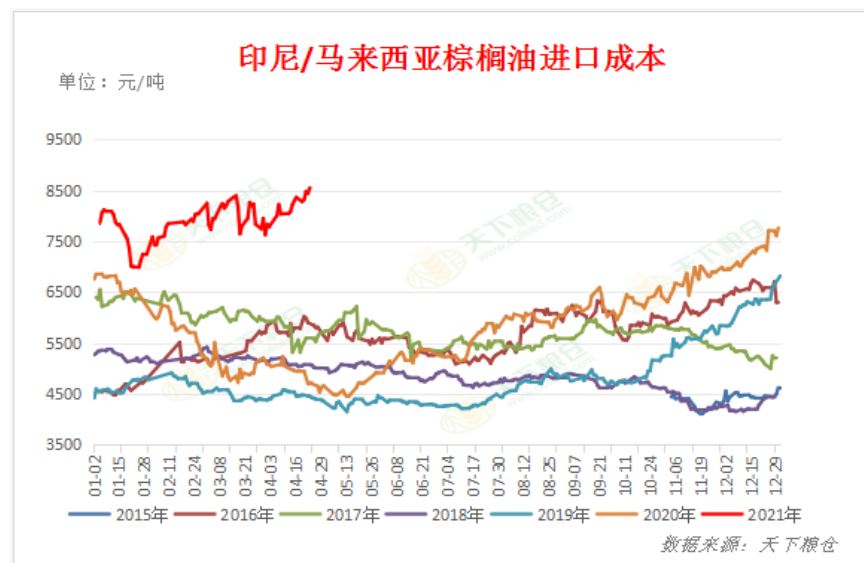
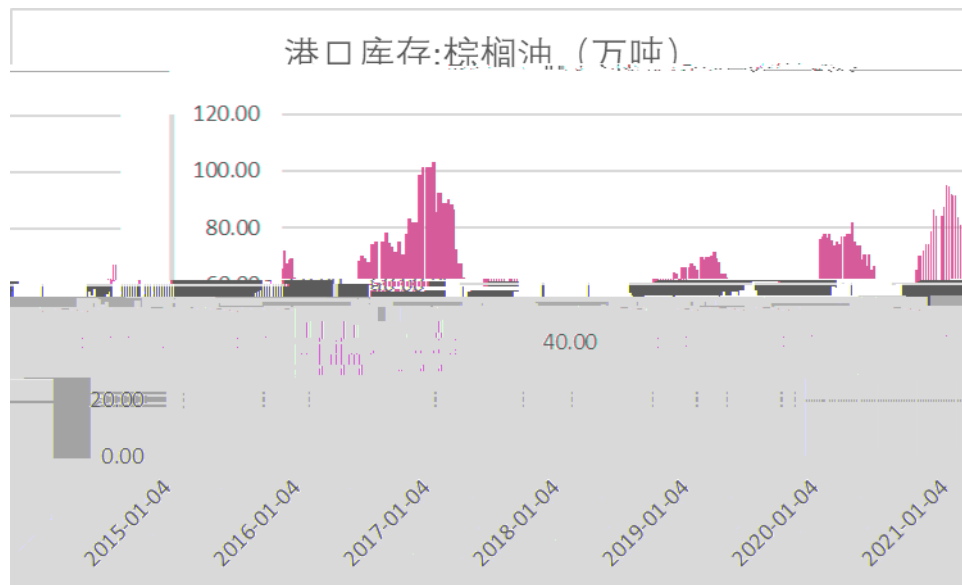
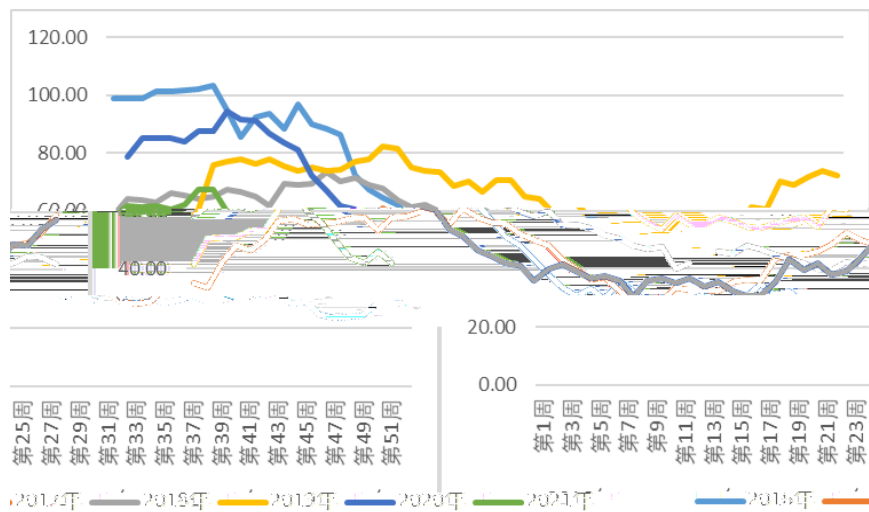


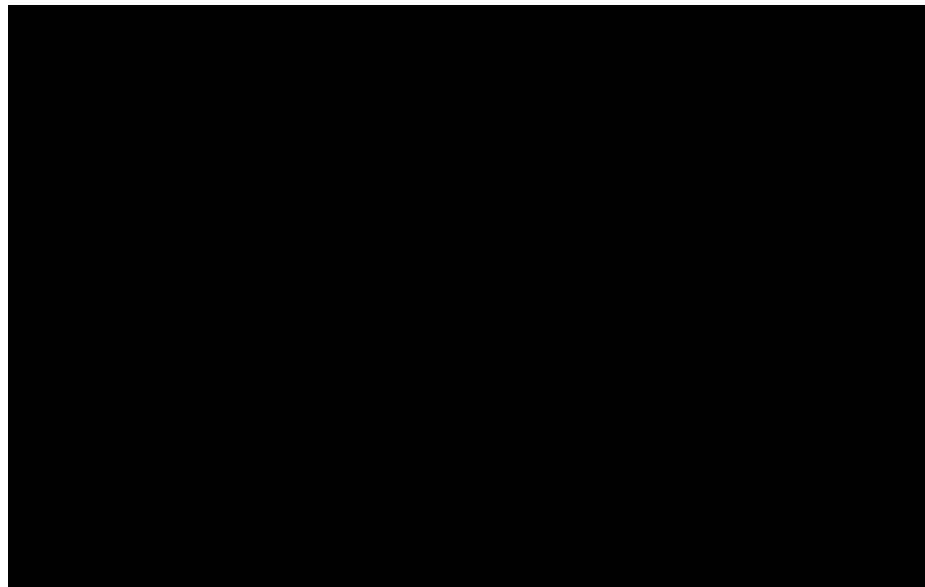




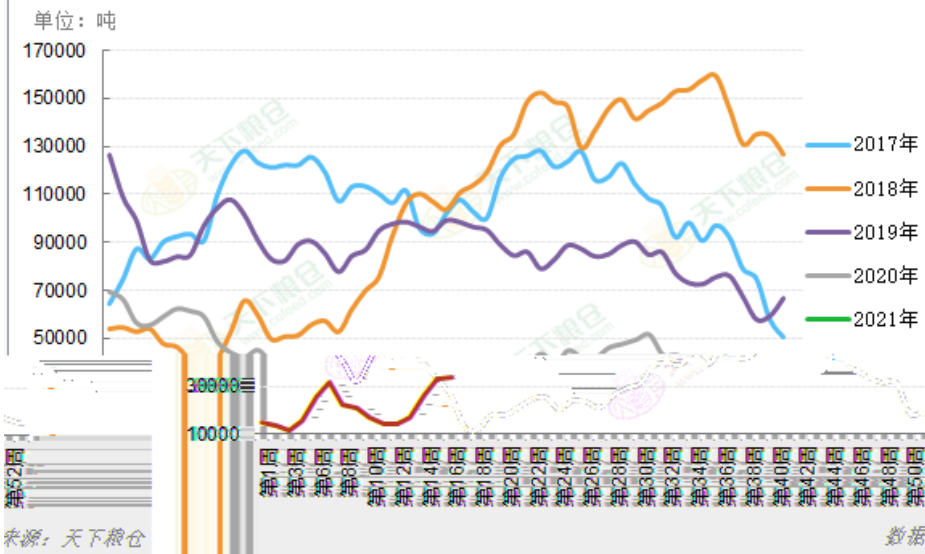


MPOB





两广及福建油厂菜油库存年度变化对比图



未来几个月国内菜籽到港情况预报

地区	2020年12月	2021年1月	2021年2月	2021年3月	2021年4月	2021年5月
广西(4家)	12.6(4日)/(21日)	11.9(9日)/(29日)	6.5(2日)	6.3(1日)	11.9(7日)	12
福建(3家)	6.8(10日)	6.6(16日)	6.2(10日)	6.0(1日)	6.0(1日)	6.0(1日)
营口(1家)						
江苏(2家)						
海唇(1家)						3
合计	34.9	31	39.5	12.6	25.9	



长安期货

CHANG AN FUTURES

CHANG AN FUTURES

1

2

3

4





敬畏



卓越

忠诚



创新

