

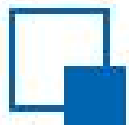
利空有所释放 于然转头向下空间有限

安  投 咨

2021年4月6日

刘 娜 投 咨

号：Z0015395



# 一、情



☞ 橡胶2105<sup>M</sup> (SHFE ru2105) 日线

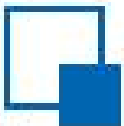


RU05

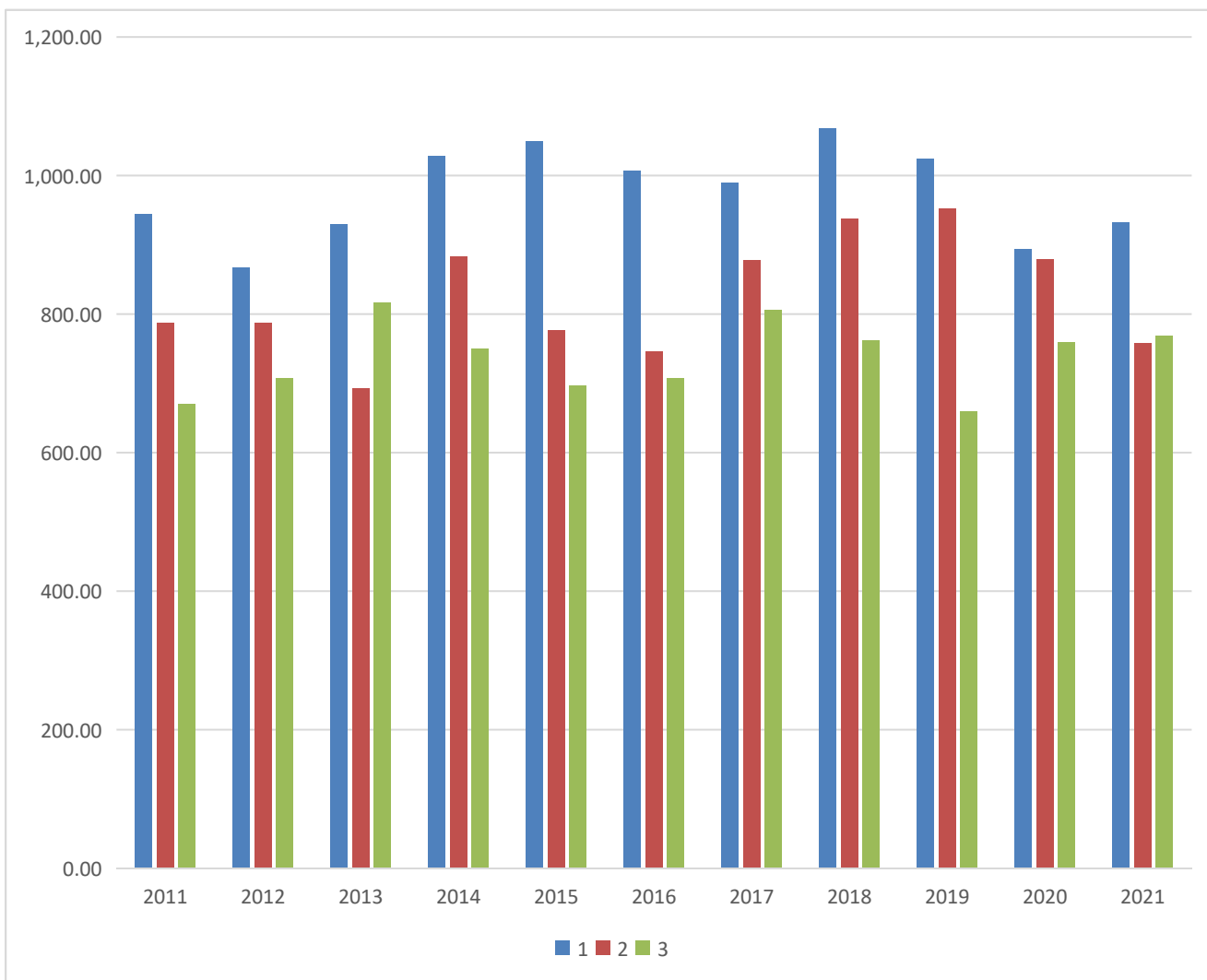
13635

60

120



# 二、供：3月产同均增加



3

ANRPC

768.6

1.4%

1.21%

3

2013

2017

3

16.4

3.9

wind



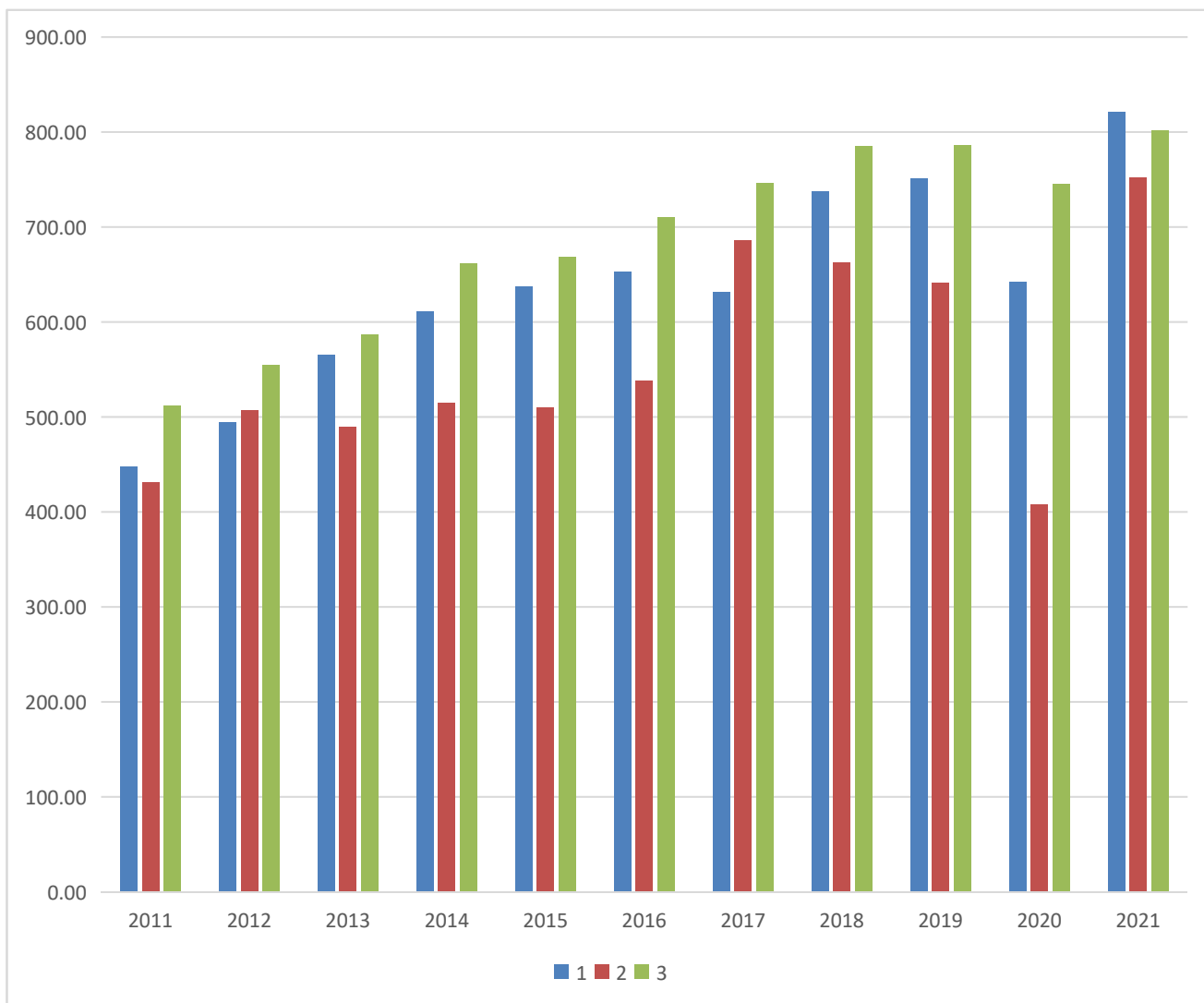
三、

: 3月

持好 态势



长安期货  
CHANG-AN FUTURES



3

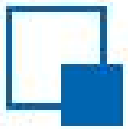
ANRPC

802

6.69%

7.67%

wind



### 三、基 总



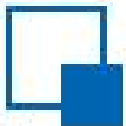
3 23

80 %

4 1

3 18

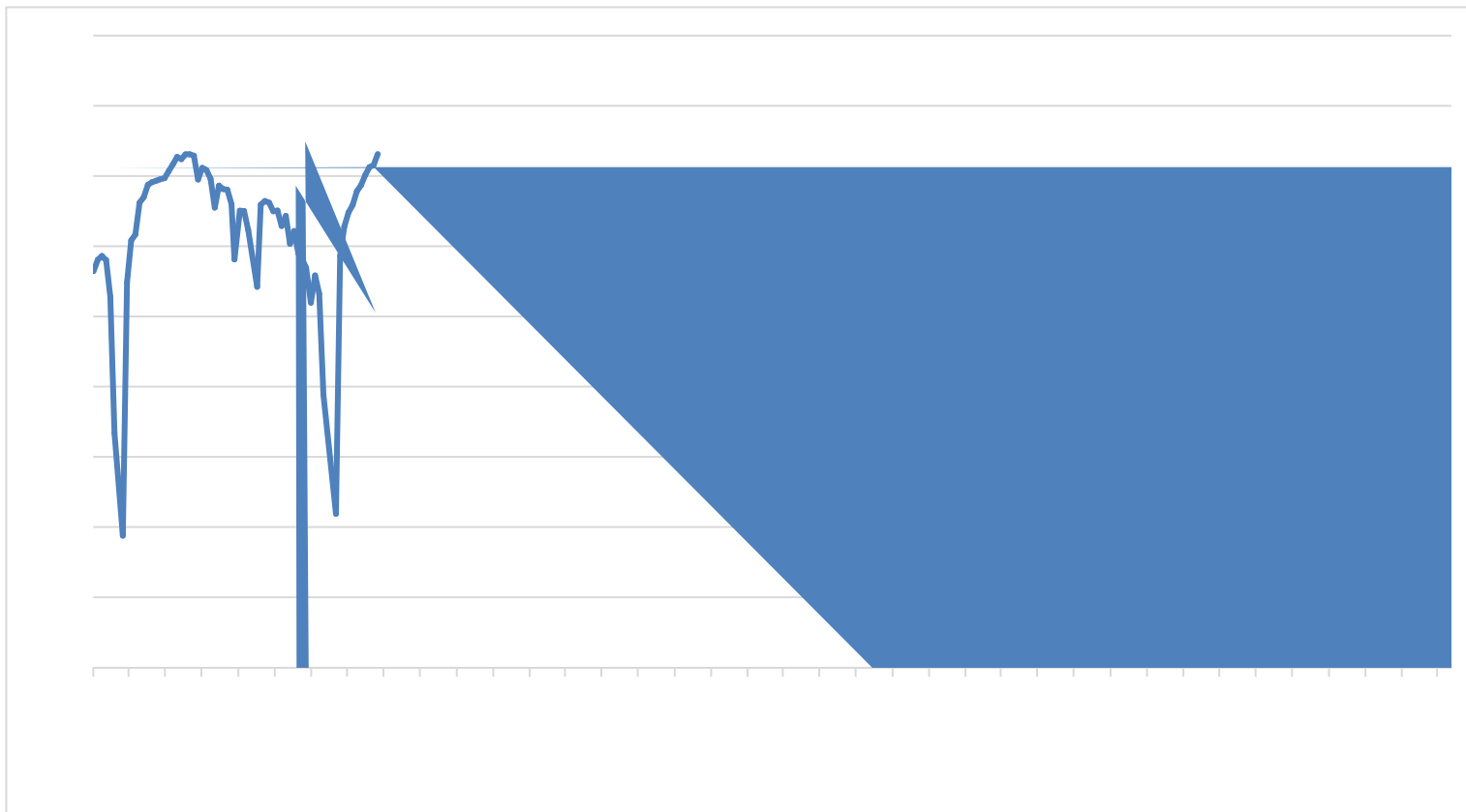
3 22



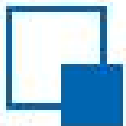
# 四、下



# 开工



2021 3  
22  
86%  
83% 2021 3  
3  
7 1



四、下

---

开工

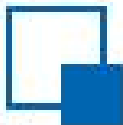


长安期货  
CHANG-AN FUTURES



	73%	74.17%
3		
2019	5%	1

wind



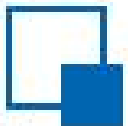
# 五、影响因 ---原



56.57







六、



长安期货  
CHANG-AN FUTURES

05



长安期货  
CHANG-AN FUTURES

