
&



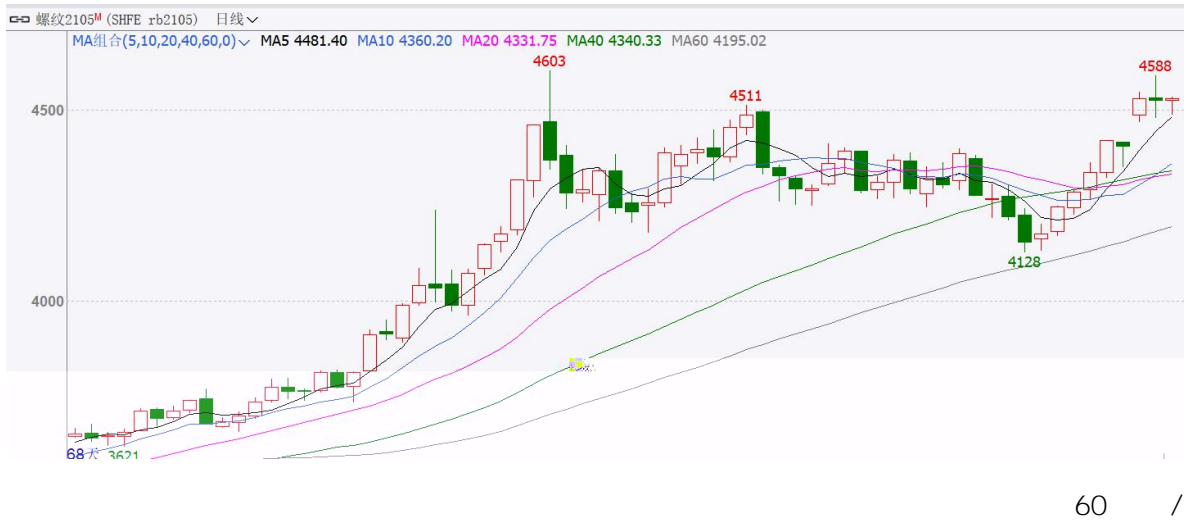
2021 2 10 2105 2105

4404 / 4608 / 2 3 123 / 150 /

2.87% 3.36%

2021 2021

1



2 11 17

28.7%

2 8

2021

2021

" " "



“ ” “ ”

3.26% 2.5% 7.05% 6.09%

0.29% 0.45% 0.31%

0.18% 4600

2021-1-21	实际产量	较上周	厂内库存	较上周	社会库存	较上周	总库存	较上周	表观需求	较上周
螺纹	344.52	-0.85	288.73	12.72	480.49	55.19	769.22	67.91	276.61	-22.75
线材	147.34	-6.91	83.73	2.45	117.53	17.86	201.26	20.31	127.03	-12.38
热轧	337.09	4.16	112.74	2.85	206.66	-4.45	319.4	-1.60	338.69	20.23
冷轧	87.08	0.90	30.1	0.22	101.13	1.69	131.28	1.91	85.17	0.56
中厚板	130.1	-3.18	79.62	0.86	110.14	1.53	189.76	2.39	127.71	-3.25
加总	1046.13	-5.88	594.97	19.10	1015.95	71.82	1610.92	90.92	955.21	-17.59
2021-1-28	实际产量	较上周	厂内库存	较上周	社会库存	较上周	总库存	较上周	表观需求	较上周
螺纹	333.67	-10.85	305.73	17.00	585.98	105.49	891.71	122.49	211.18	-65.43
线材	140.48	-6.86	92.15	8.42	148.56	31.03	240.71	39.45	101.03	-26.00
热轧	336.74	-0.35	119.64	6.90	205.45	-1.21	325.09	5.69	331.05	-7.64
冷轧	87.18	0.10	30.77	0.62	101.95	0.82	132.72	1.44	85.74	0.57
中厚板	134.23	4.13	80.74	1.12	114.29	4.15	195.03	5.27	128.96	1.25
加总	1032.3	-13.83	629.03	34.06	1156.23	140.28	1785.26	174.34	857.96	-97.25
2021-2-4	实际产量	较上周	厂内库存	较上周	社会库存	较上周	总库存	较上周	表观需求	较上周
螺纹	321.95	-11.72	337.9	32.17	731.62	145.64	1069.52	177.81	144.14	-67.04
线材	135.53	-4.95	100.29	8.14	186.5	37.94	286.79	46.08	89.45	-11.58
热轧	333.98	-2.76	121.14	1.50	221.05	15.60	342.19	17.10	316.88	-14.17
冷轧	85.87	-1.31	33.36	2.59	103.48	1.53	136.84	4.12	81.75	-3.99
中厚板	135.61	1.38	81.83	1.09	118.91	4.62	200.74	5.71	129.90	0.94
加总	1012.94	-19.36	674.52	45.49	1361.56	205.33	2036.08	250.82	762.12	-95.84
2021-2-18	实际产量	较上周	厂内库存	较上周	社会库存	较上周	总库存	较上周	表观需求	较上周
螺纹	308.88	-13.07	511.91	174.01	1008.89	277.27	1520.8	451.28	83.24	-60.90
线材	132.87	-2.66	180.38	80.09	270	83.50	450.38	163.59	51.08	-38.38
热轧	341.46	7.48	143.34	22.20	260.73	39.68	404.07	61.88	310.52	-6.36
冷轧	82.99	-2.88	42.35	8.99	119.68	16.20	162.03	25.19	70.40	-11.36
中厚板	137.48	1.87	107.76	25.93	143.95	25.04	251.71	50.97	112.00	-17.00
加总	1003.68	-9.26	985.74	311.22	1803.25	441.69	2788.99	752.91	627.23	-134.90

2

19 4480 / 180 / 2105 4524 /

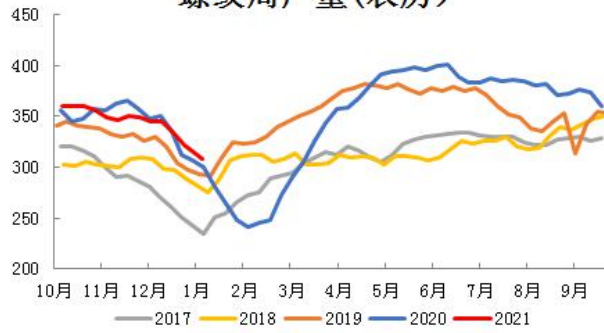
120 / -44 / 60 /

2 5 Mysteel 247 1.17

83.2% 0.41 90.94% 71 f

26.11	32.36%	17.5	36.16%	11.72
321.95		2.76	333.98	
	1003.68	9.26	971.54	
16.87	308.88	13.07	300.37	
12.09				

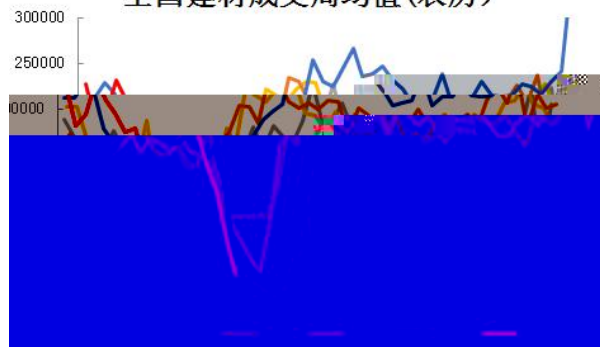
螺纹周产量(农历)



1.88

67.43%	20.8%	16.7
--------	-------	------

全国建材成交周均值(农历)



6

6.1%

5.3% 7.0% 9.7% 15.9% 10.9%

483.06

+ 2788.98

752.9

824.98

985.74

311.22

346.53

511.91

174.01

196.29

1803.24

441.68

478.45

1008.89

277.27

281.16

4

2

