

马盘棕榈油大幅回调, 油脂前多谨慎持有

1、棕油产地方面:

MPOB	3	8%
3977.36		
MPOB 1		3
ITS	2 1-15	53.0545 1
41.6565	27.4% 2	
SPPOMA	2 1 -15	9.42% 4.21%
0.99%		

2、美豆方面:

USDA	2021	9000
2020	8310	8940

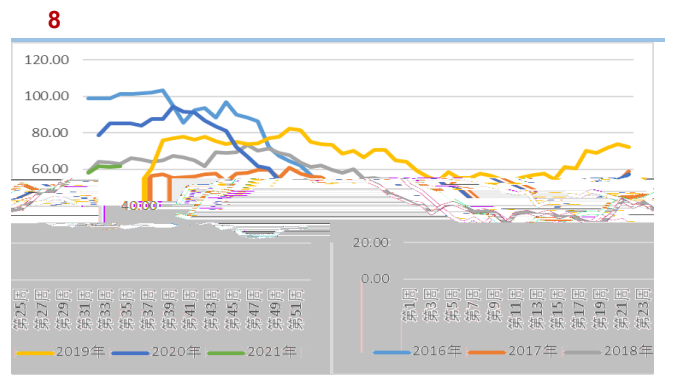
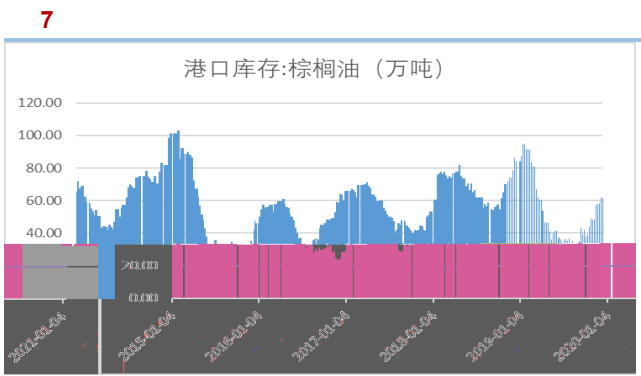
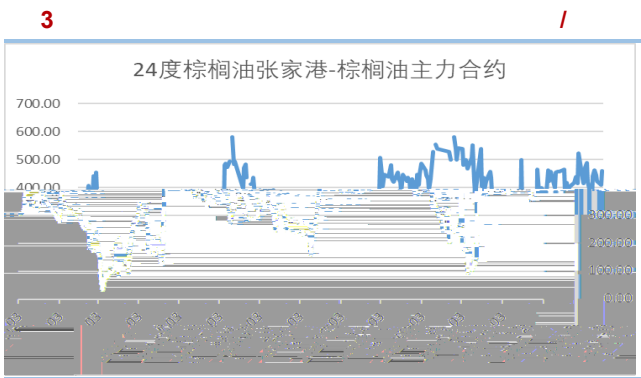
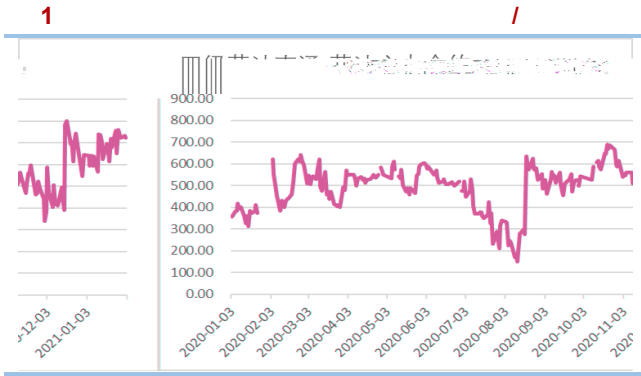
20%

3、国内市场方面

	2	5		83.66		80.455	3.205
3.98%		93	9.34		10.04%		84.81
1.36%	109.95				61.93		60.49
2.3%	61.25	1.1%		94.51	34.47%		
					1.65	1.55	1000
6.45%		5.9	72.03%				

BMD 2

整					





9

