

---

01105	9665	9756	9642	9697	+22	+0.23%	23.2	-92850	13.1	-2780
Y2105	7698	7784	7694	7760	+38	+0.49%	41.1	-75189	42	-1607
P2105	6584	6694	6580	6678	+84	+1.27%	48.3	-71293	35.2	-7016

1、棕油产地方面：

2、美豆方面：

---

3、国内市场方面

下

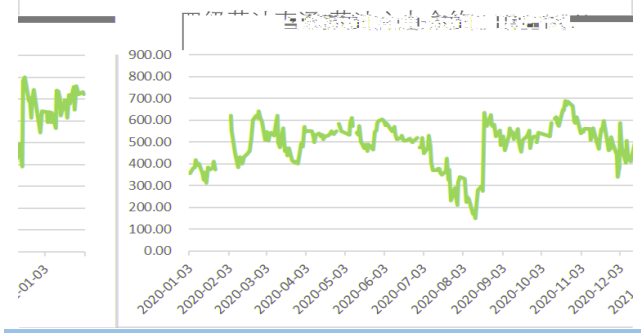
但 但但					
	201	0	11 2	3	
			3031	0	
	1 2		00 2		

1

/

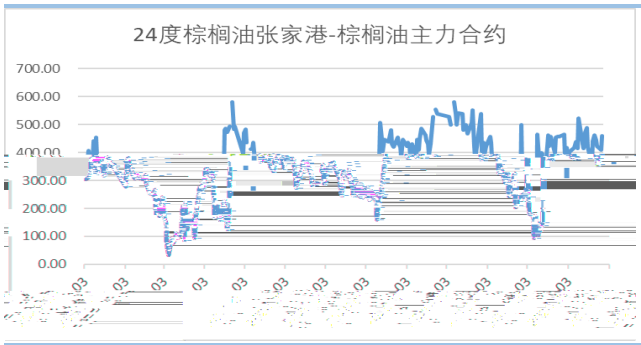
2

/



3

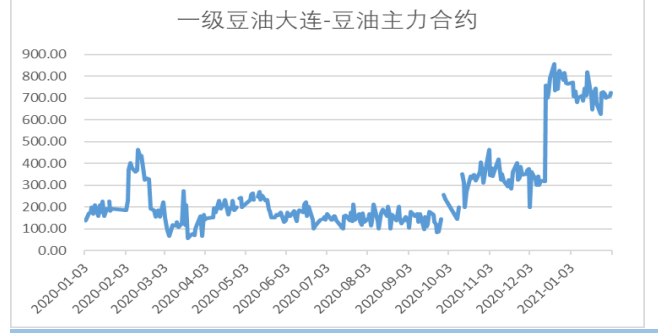
/



5

-

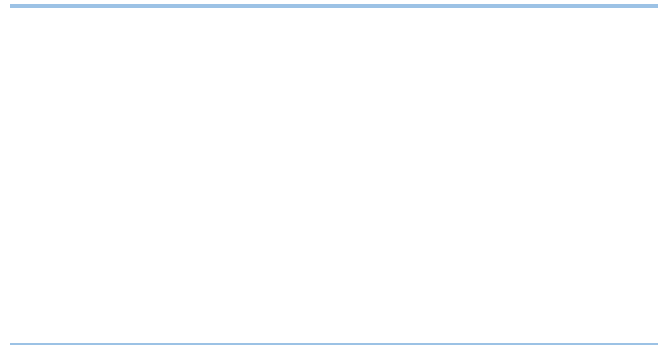
/



4

-

/



6

-

/



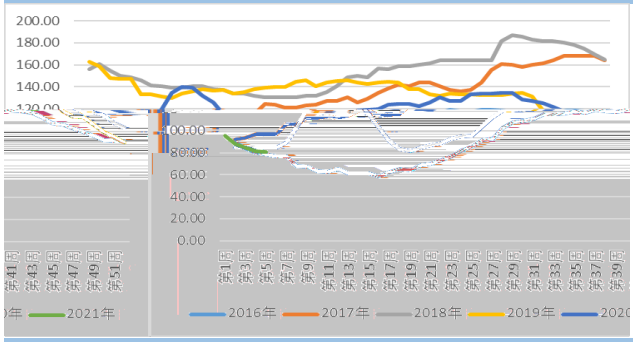
7



8



9



作

所

所

反

反