

---

&



1:SA2105 -



12

05

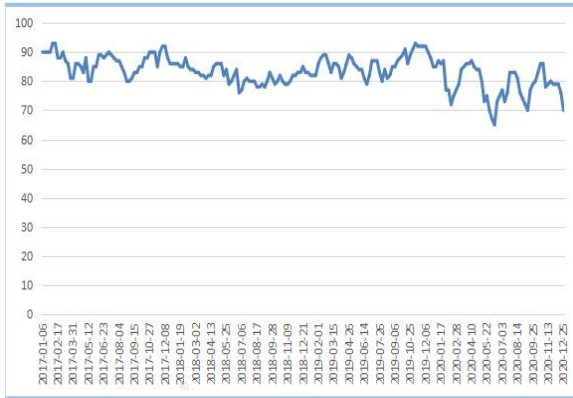
1682

16.7%

5%

2

%



2017 -2019

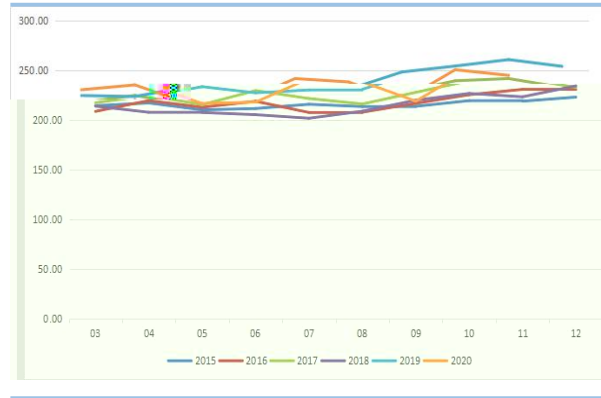
6

65%

80%

2019

3



80%

10

5

9

11

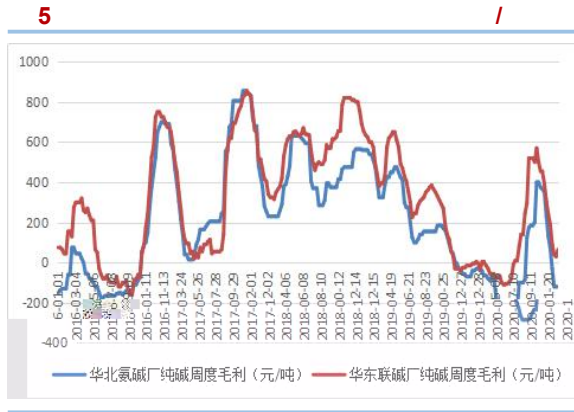
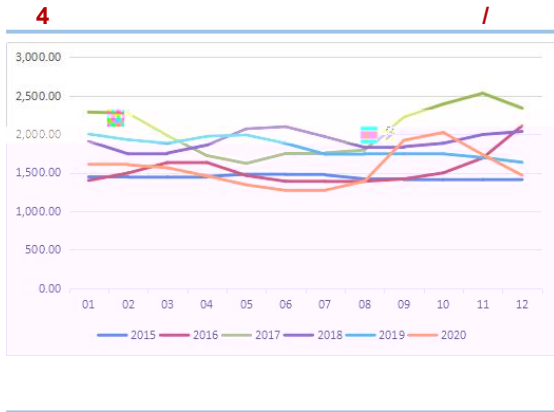
245

11

2503.8

4.9%

2019



7

9

1919 / 10

2036 / 11

1733

/ 12

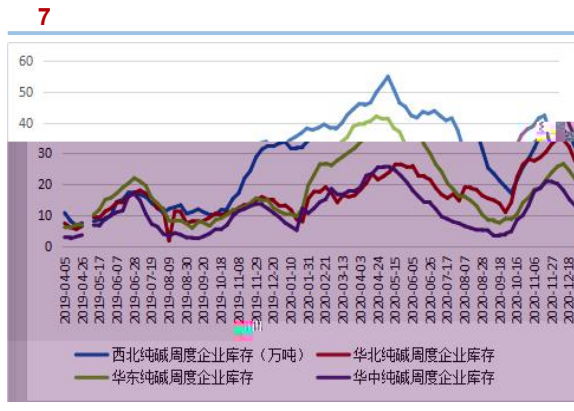
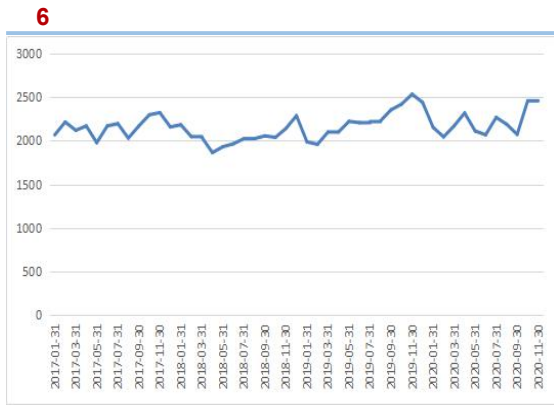
1466 /

2016-2019

7

285 /

110 /



2000-2500

11

2452

3.27%

5

9

3.3

8

14.8

23.4

10

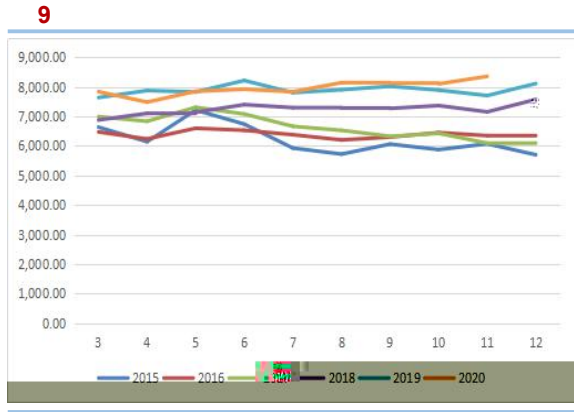
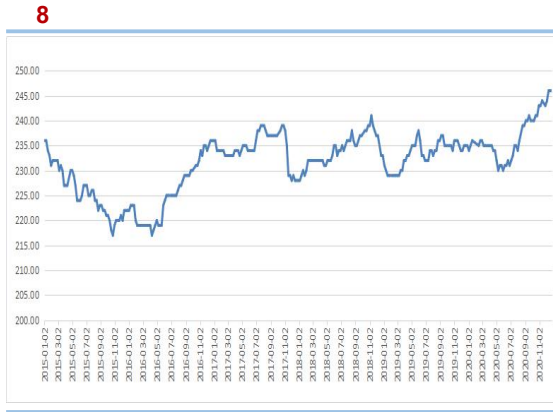
12

13.1

21.7

27.5

32.1



4

2182.86 /

11

8351

8.4%

11

86243

2020





