

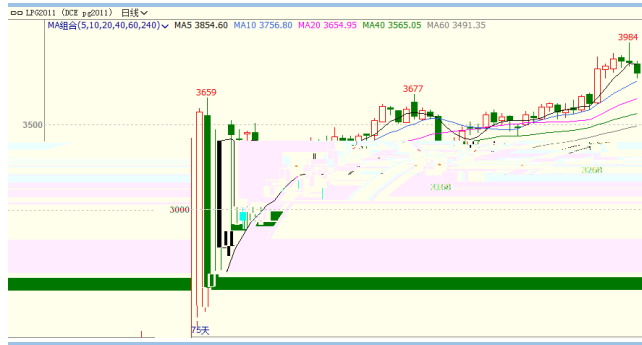
宋宇杰



# 7 LPG

LPG 2011 3900 / LPG

PG2011



EIA	7	10	749.3	5.31688
759.2		314.7	2.48535	846
453	1.76809	233.8		
7	14	OPEC	2020	13 / 9072
/	2021	OPEC	9772	/
2020		OPEC6		189

请务必阅读正文后的免责声明部分！

2227 /

100% 6

1276 /

		Change 2021/20									
		2021	2020	2019	2018	2017					
<b>World Oil Demand</b>		23.30	24.84	24.65	25.46	25.57					
84.00	7.89	Americas	20.50	1.52	8.00	of which US	18.99	20.48	19.92	20.74	20.86
			13.80	1.21	9.59	Europe	12.59	13.72	13.54	14.03	13.91
			7.53	0.47	6.59	Asia Pacific	7.06	7.90	7.34	7.19	7.69
			<b>46.47</b>	<b>3.51</b>	<b>8.18</b>	Total OPEC	<b>42.96</b>	<b>46.47</b>	<b>45.53</b>	<b>46.67</b>	<b>47.17</b>
			13.96	1.21	9.47	Other Asia	12.76	13.68	14.05	13.67	14.45
			5.05	0.74	17.20	of which India	4.31	5.27	4.68	4.75	5.48
			6.40	0.30	4.92	Latin America	6.10	6.31	6.47	6.44	6.38
			7.97	0.37	4.86	Middle East	7.60	8.01	7.74	8.24	7.87
			4.74	4.64	0.23	1.8U	4.41	4.64	4.54	4.62	
			0.60	0.68	0.11	19.58	Other Europe	0.57	0.79	0.68	0.59
			14.03	13.22	1.10	9.09	China	12.12	11.88	13.57	13.40
			<b>19.45</b>	<b>18.54</b>	<b>1.44</b>	<b>8.42</b>	Total "Other regions"	<b>17.10</b>	<b>17.31</b>	<b>18.79</b>	<b>18.61</b>
			09.24	07.73	7.00	7.74	Total Demand	09.73	08.95	08.93	07.93

LPG

LPG

LPG

7 16

MTBE

50.99%

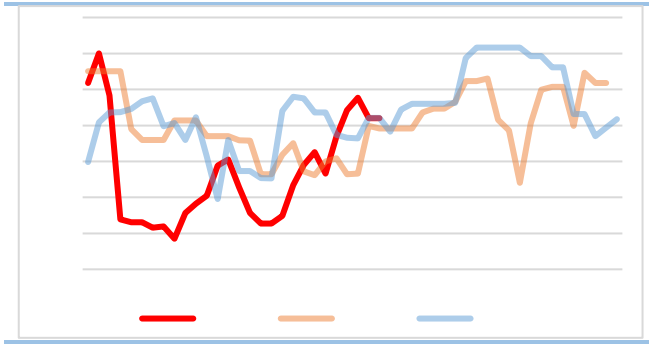
MTBE

MTBE

MTBE

MTBE

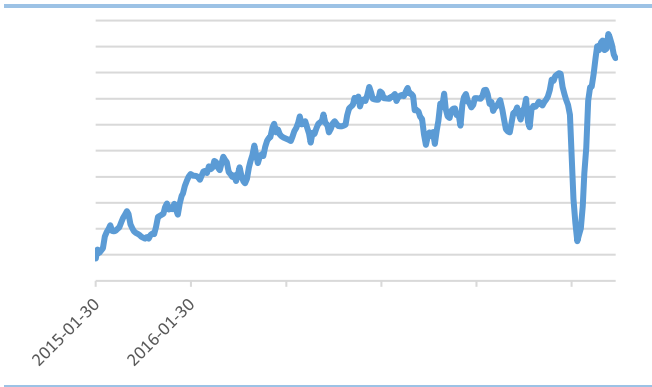
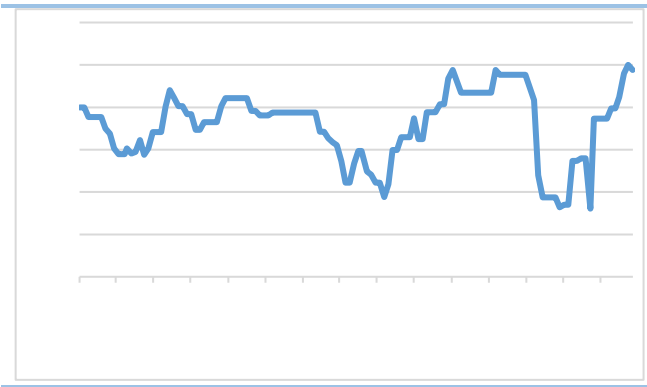
请务必阅读正文后的免责声明部分！



### LPG

0.69%    2020    3    84.39%    0.61%    7    72.76%    7    16    70%

### LPG

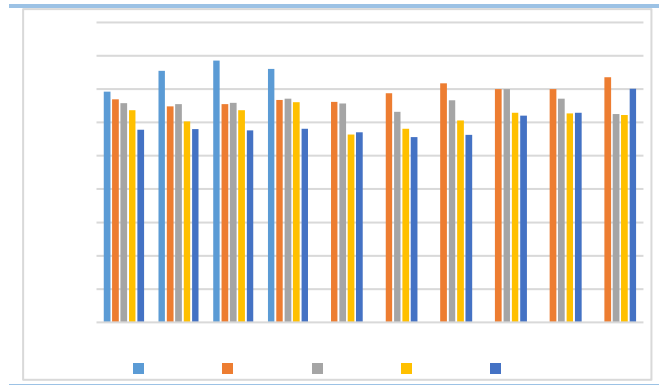
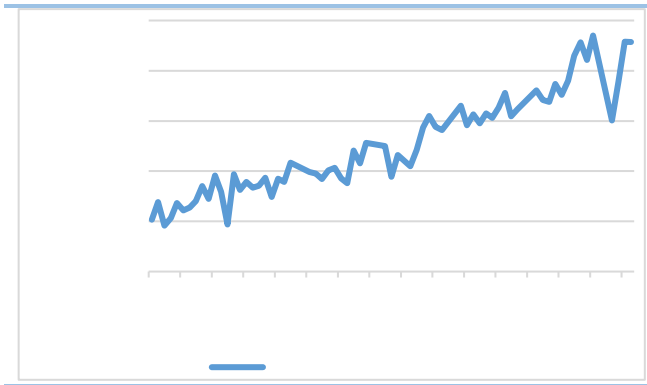


6    5787    34    9.0%

请务必阅读正文后的免责声明部分!

380.4

12.5

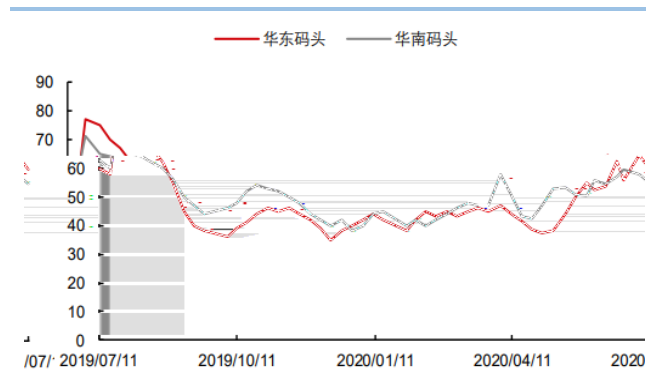


7 13

4.65%

59.97%

3.13% 54.9%



5

LPG

201.15

35.07

LPG

29.13%

1.27%

27.2

8

2020

LPG

LPG

LPG

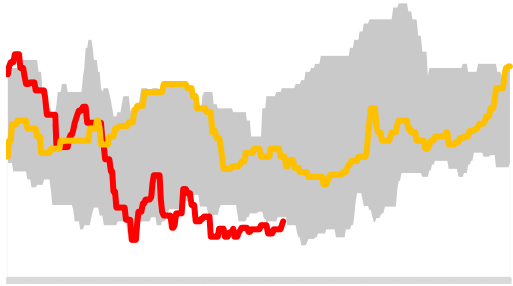
29% 30%

5

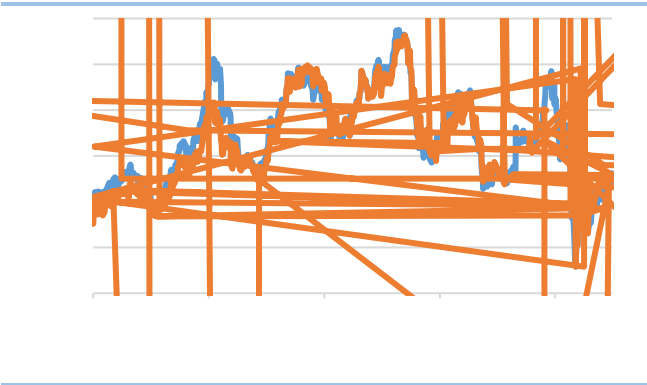
LPG

请务必阅读正文后的免责声明部分!





2020	7	CP	360	/	10	/	340	/
10	/		2827	/	2671	/		
7	16			372	/	362	/	7 17
			2700	/	2930	/		



7 17 LPG  
-38.13%

LPG -1067 /

LPG 6 11.1 7 13 7  
26.8 13 37.9

请务必阅读正文后的免责声明部分！



商品	产地	标准仓单	日发货速度
1	海拉尔	1500	1
2	东港市九丰能源有限公司	1000	2
3	华凯石油燃气有限公司	1000	3
4	华凯石油燃气有限公司	1000	4
5	烟台西港码头	20000	5
6	东湾液体化工码头	20000	6
7	福清江阴港	60000	7
8	万华化学(烟台)石化有限公司	1000	8
9	广西中油能源有限公司	1000	9
10	防城港	1000	10
11	福州申民新能源有限公司	3000	11
12	宁波百地年液化石油气有限公司	3000	12

OPEC+ 8

3000

LPG

PG2011

4000

5

10

3750-

4050

请务必阅读正文后的免责声明部分！





”