

供不应求局面料有改观，镍价短期上涨后压力增加

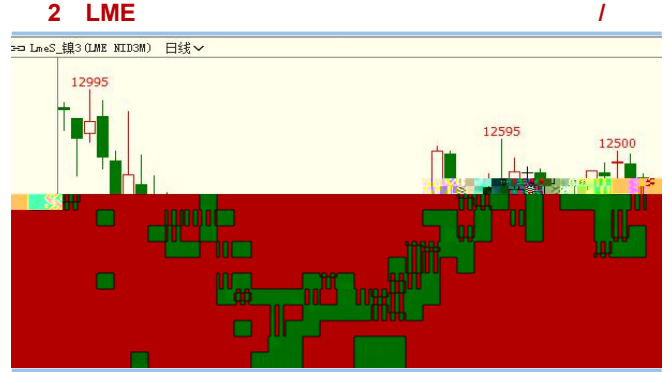
研发 投资咨询

屈亚娟





一、行情回顾



4

103680 LME

12595

二、基本面—供不应求局面料有改观

3

160.9

42%

592.1

19.3%

M

5 8

962.85

725.13

33.23

231.3

19.7

3.8% 278

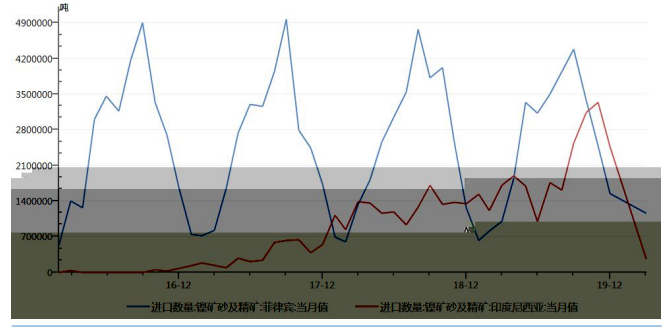
5



3



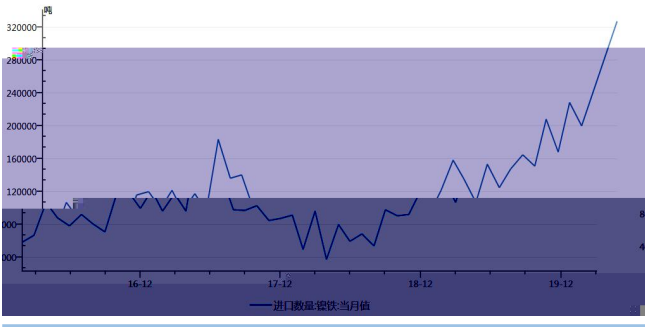
4



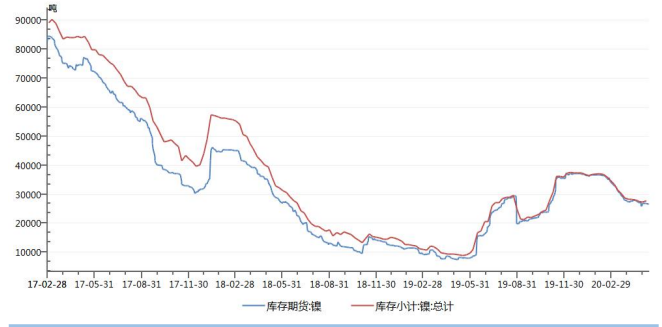
M	4	4.13	1.55%	3.4
				0.71
3.16%				6.84%
5		7.87%	4.45	
	4			3.71%
	B	4		3.74%
				5
32.71		3		
SMM	4	1.44		5
1.51		4	5	8
				27698
	26766	LME	23	



5



6



M 4 32

222.91

4.4%

7.9%

300 114.22

8.2%,4

5

3.3% 230.25

3

5 8

49.35

300

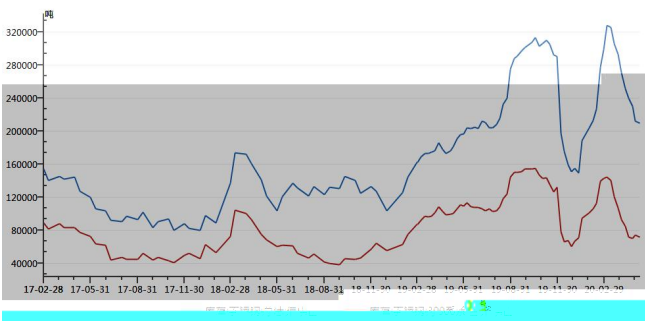
34.96

20.97

300

7.16

7



8

