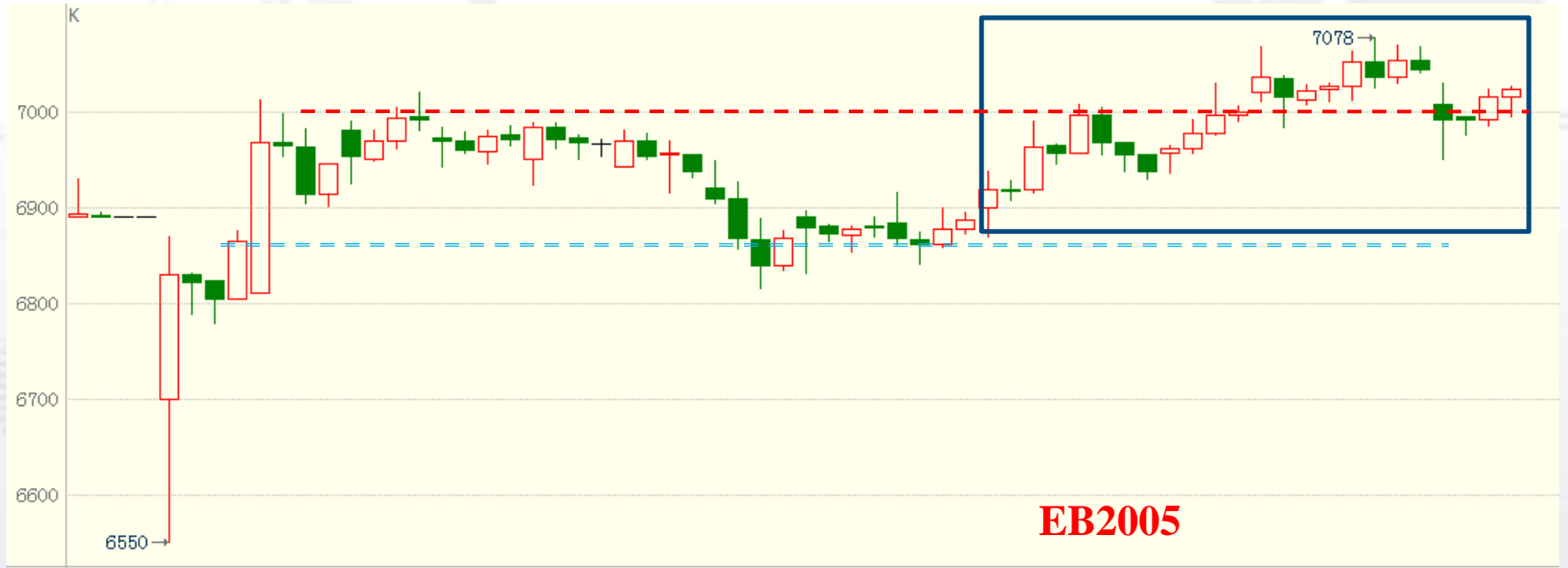
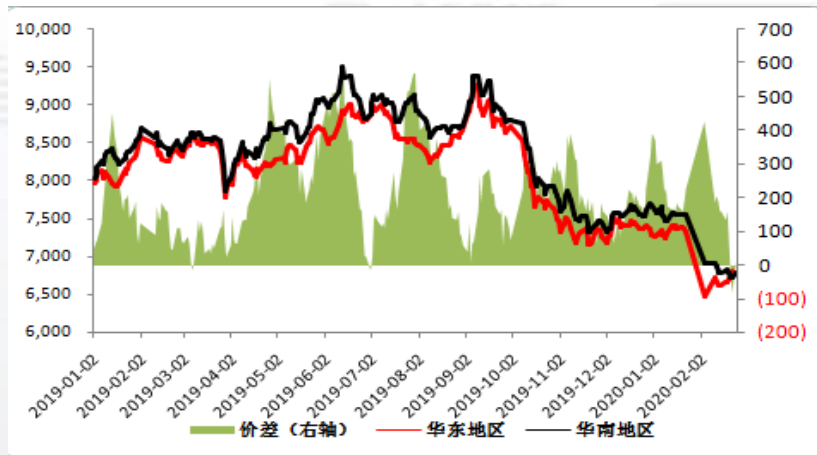
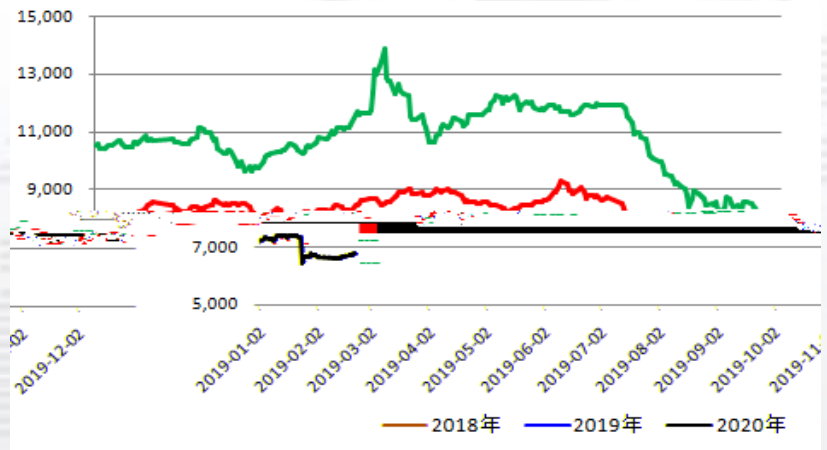


2020.2.24



6860 7000



, wind

2 24

EIA

95 /

2 21

, wind

6760 /

CFR

OPEC+

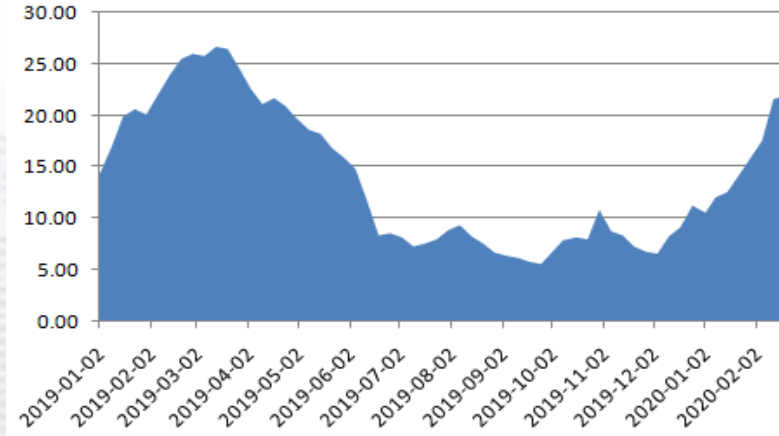
25 /

17

6775 /

837.5

/



, wind

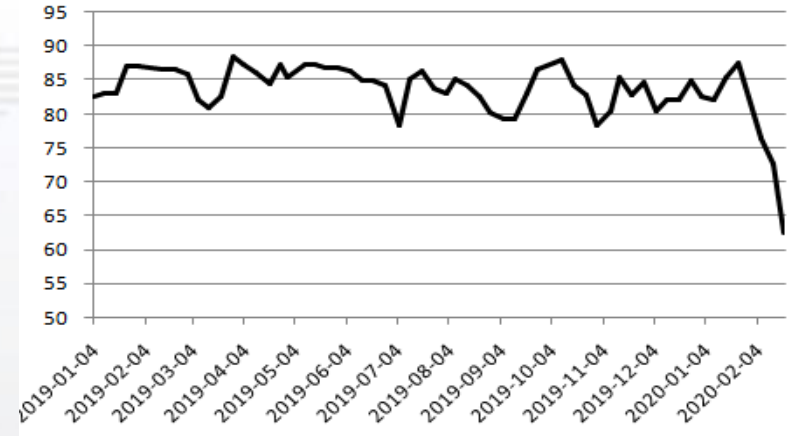
2 19

21.9

2 20

62.4%

5 7

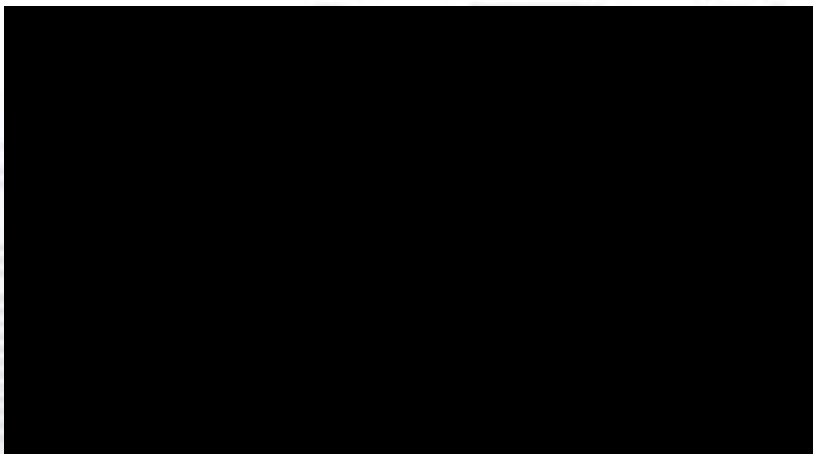


, wind

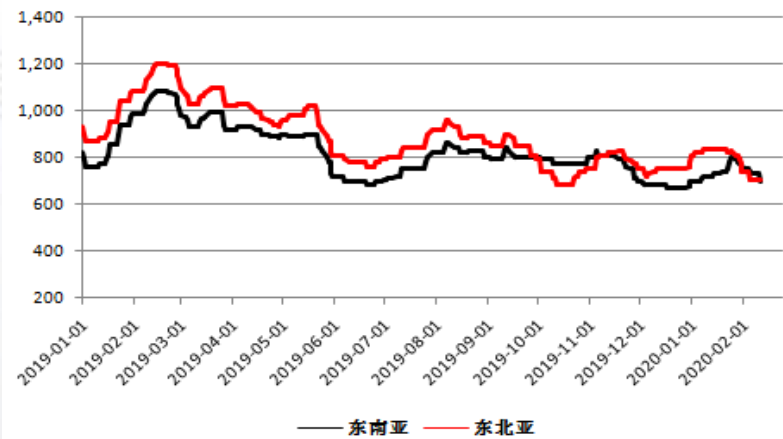
0.3

4.5

10.3



CFR



, wind

2 21

1100

5550 /

7238 /

, wind

CFR

35

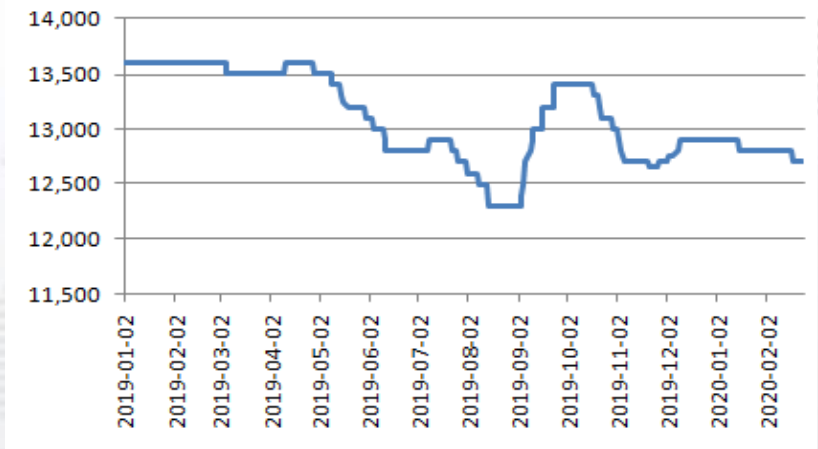
480 /

706 /

72



ABS 757K



EPS



, wind

, wind

EPS 12

18% ABS

10.15

52.5% PS

2.03

43.68% UPR

3

4%



7050

6900

